



The National Parks: America's Best Idea

A FILM BY KEN BURNS

SERIES BEGINS SEPTEMBER 27 | 7PM

A Message from the New PBS Hawaii Board Chair

Robert Alm

Chair, PBS Hawaii Board of Directors

Robbie Alm is the new Chair of PBS Hawaii's unpaid, governing Board of Directors. He is well-prepared for the role, having served as Board Treasurer and having assisted in the evolution of public television in the islands. A longtime leader in Hawaii's nonprofit community, Robbie also is Executive Vice President for Hawaiian Electric Company.

He holds a law degree and teaches a graduate course on leadership in the Public Administration Program at the University of Hawaii at Manoa. The son of Honolulu educators, Robbie has a great affinity for PBS Hawaii and the way our high-quality programs make lifelong learning available to all. He knows what it's like to feel a sense of discovery and wonder in coming across something on PBS Hawaii that sparks a new idea or illuminates understanding.

- Leslie Wilcox, President and CEO



Robert Alm

*Chair, PBS Hawaii
Board of Directors*

It seems like public television has always been a part of my life. I went to University High School, and we shared grounds and facilities with educational TV. The father of one of my close friends was one of its founders. When I was Director of Commerce and Consumer Affairs in the 1980s, the Hawaii Public Broadcasting Authority was part of the Department. I remember Nino Martin and the first cooking show. I remember the great local productions on the Hawaiians, on Mauna Kea, on sharks. I remember the great film on Queen Lili'uokalani. And I also remember when the funds started to shrink, and we began to cut State support for the station. Later I joined the Board of the new community television station that emerged out of state government. I worked with and admired the leadership of Jim Young, Don Robbs, Mike McCartney, and now Leslie Wilcox; and, of course, long-time Board Chair Neil Hannahs who poured his mana'ō, and his full heart, into the life of this station. *continued on following page >>>*



Throughout those years we have been blessed with great staff and with great professionals in the community who worked with us in many different ways. Their love of the mission of public television, and their insistence on the highest level of quality in the work we create and bring to the people of Hawai'i, has always been inspiring.

And we have been truly blessed to have great viewers, who really are our partners in making this happen. As we moved away from State resources, our viewers consistently stepped forth to show their support tangibly and generously. For all of us, it is always inspiring to see how much support there really is for what we do, and when our supporters do share their thoughts with us, how deeply they love quality programming that educates and inspires.

As we look out at the years that lie ahead, we have a great opportunity and a responsibility to build the resource that is compelled by our time. We will preserve what is valuable and foundational of our past, and we will proceed without fear to find our best and most valuable role in the evolving and changing life of Hawai'i.

We believe that the future of public television will continue to involve celebrating who we are and who we are becoming; we believe it will involve giving far greater voice and place to the next generations beginning as young voices finding their own speech; and we believe it needs to foster honest and full discourse on the issues which are before us. We believe it will continue to celebrate the arts, and dance, and music, and that it will help us to appreciate the many ways in which we express ourselves. And we know that it will always find foundation in the amazing quilt of people that is Hawai'i, beginning with the Native Hawaiian host culture.

Finally, we believe that part of our responsibility, our kuleana, is to be a relentlessly positive force even in times of great turmoil and trouble, and that even as we struggle through changes in our own activities, we will not lose sight of our blessings, our custody of a great legacy, and our joy in the great and noble role of communicator and storyteller.

Together we will accomplish great things.

Aloha,
Robbie

PBS Hawaii Board of Directors

Chair

Robert Alm

Vice Chair

Ronald Hansen

Secretary

Tim Johns

Treasurer

Jason Fujimoto

Andrew Aoki

Carolyn Berry

Jimmy Borges

Keiki-Pua Dancil, Ph.D.

Robin Puanani Danner

Guy Fujimura

Ken Hiraki

Alan Hoffman

Hokulani Holt

Joan Lee Husted

Kawika Kahiapo

Ian Kitajima

Thomas Koide

Bill Mills

Cameron Nekota

Marissa Sandblom

David Watumull

The National Parks: America's Best Idea

PREMIERES SUNDAY,
SEPTEMBER 27 | 7PM

Continues September 28, 29, 30,
October 1, 2 | 8PM

The 12-hour, six-part documentary series, directed by Ken Burns and co-produced with his longtime colleague, Dayton Duncan, who also wrote the script, is the story of an idea as uniquely American as the Declaration of Independence and just as radical: that the most special places in the nation should be preserved, not for royalty or the rich, but for everyone. As such, it follows in the tradition of Burns's exploration of other American inventions, such as baseball and jazz. [continued >>>](#)

cover: Grand Canyon National Park

right: Grand Teton National Park





above: Old Faithful, Yellowstone National Park

Filmed over the course of more than six years in some of nature's most spectacular locales — from Hawaii Volcanoes National Park to Yosemite, Yellowstone to the Grand Canyon, the Everglades of Florida to the Gates of the Arctic in Alaska — the documentary is nonetheless a story of people from every conceivable background: rich and poor; famous and unknown; soldiers and scientists; natives and newcomers; idealists, artists and entrepreneurs; people who were willing to devote themselves to saving some precious portion of the land they loved, and in doing

so, reminded their fellow citizens of the full meaning of democracy.

“Just as many of the lands that make up today's national parks were the spiritual homes for the indigenous tribes who lived there, they had a profound and often spiritual impact on the settlers who first saw them and on the visionaries who fought tirelessly to preserve them as the common property of the American people,” said Burns. “They saw in them a visual, tangible representation of God's majesty. Our film celebrates the beauty

of these parks and the vision and foresight of the men and women who made sure that this land would be preserved.”

The narrative traces the birth of the national park idea in the mid-1800s and follows its evolution for nearly 150 years. Using archival photographs, first-person accounts of historical characters, personal memories and analysis from more than 40 interviews, and what Burns believes is the most stunning cinematography in Florentine Films' history and the most contemporary footage of any Ken Burns

continued >>>



film since LEWIS AND CLARK, the series chronicles the steady addition of new parks through the stories of the people who helped create them and save them from destruction. It is simultaneously a biography of compelling characters and of the American landscape.

“Making this film was one of the greatest joys of my life,” said Dayton Duncan, who has visited all but one of America’s 58 national parks and who is the author of the companion book, to be published by Alfred Knopf. “Each park is unique and has its own fascinating historical story. But they are all connected by the transformative idea that they belong to each of us, providing a shared place that lives in the memory of every individual and every family that has visited them over the years. And they are connected by the notion that individual Americans, in the best possible example of democracy, worked to make sure that future generations could enjoy them.”



top: Arches National Park

bottom: Hawaii Volcanoes National Park

THE NATIONAL PARKS: AMERICA'S BEST IDEA

Historical Figures Featured in the Film

Ansel Adams (1902-1984)
Ansel Adams, a celebrated photographer from San Francisco, became an influential force in the designation of Kings Canyon as a national park through his breathtaking photographs and his work with the Sierra Club. Adams' 1938 book, *Sierra Nevada: The John Muir Trail*, captivated President Franklin Roosevelt after Secretary of the Interior Harold Ickes showed it to the president. Roosevelt would not only designate Kings Canyon a national park in 1940, but a roadless park, leaving it completely undeveloped. Due to his handicap, Roosevelt's only access to the splendor of Kings Canyon would be through Adams' photography.

Adams' influence on the national parks was not limited to his efforts in Kings

Canyon. His relationship with Ickes led to a contract with the Department of the Interior in 1941. Adams' contract sent him on a journey to all but one of the national parks (the Everglades), capturing thousands of images of the national parks on what he considered "one of the greatest ideas ever to come out of Washington."

George Masa (1881-1933)
Born Masaharu Iizuka in Osaka, Japan, Masa came to the United States in 1901 to study mining. He eventually settled in Asheville, North Carolina, where he took a job as a bellhop at the swank Grove Park Inn. But he soon learned the art of photography, opened his own studio, made a name for himself with his scenic photographs, became friends with the writer Horace Kephart and spent the rest of his life

working to preserve the Smoky Mountains. His photos, with Kephart's text, were used in promotional materials supporting the effort to create a national park. After seeing Masa's photographs, John D. Rockefeller, Jr., donated \$5 million to help purchase the lands to become part of a new park.

Masa and Kephart also worked on mapping and promoting the creation of the Appalachian Trail in the Smokies. One year after Masa's death in 1933, President Franklin Roosevelt completed the purchase through \$1.5 million in government funds, finalizing the Great Smoky Mountains National Park.

Today, a 5,685-foot peak in the park is named Masa Knob, dedicated in 1961 in Masa's honor.



George Masa (pictured here photographing the Great Smoky Mountains) helped the crusade to create Great Smoky Mountains National Park with his scenic photographs of the region.

A FILM BY KEN BURNS
THE NATIONAL PARKS
America's Best Idea

PBS Hawaii cordially invites you to a VIP preview screening of the highly anticipated PBS documentary series, *The National Parks: America's Best Idea* by Ken Burns.

Sunday, September 20

5:00 - 7:30 p.m.

Arizona Memorial Museum Theater

1 Arizona Memorial Place

Honolulu, Hawaii 96818

As a valued friend, please be our guest at a reception following the screening.

Please R.S.V.P. to Kara at (808) 973-0289

or e-mail kreynolds@pbshawaii.org

before Wednesday, September 9.

Seating is limited.

PBS Hawaii premieres

The National Parks: America's Best Idea

on Sunday, September 27 at 7:00 p.m.

**You own it. Let PBS and Ken Burns
give you the grand tour.**

**WELCOME
HOME**



Community Partners

MAHALO TO BUSINESSES IN OUR COMMUNITY FOR THEIR GENEROUS SUPPORT

PRODUCTION UNDERWRITERS

Hawaiian Airlines

Sony Hawaii Company

CORPORATE & FOUNDATION UNDERWRITERS

ABC Stores & The Kosasa Foundation

Aesthetic Vision Center

Arizona Memorial Museum Association

Avis

Bank of Hawaii

The Cades Foundation

Cades Schutte LLP

Chaminade University of Honolulu

Commercial Data Systems

Cronin, Fried, Sekiya, Kekina & Fairbanks

First Hawaiian Bank

First Insurance Company of Hawaii

FLEXA Hawaii

Friends of Hawaii Volcanoes National Park

Hawaii Community Foundation

Hawaii Government Employees Association

Hawaii Medical Service Association

Hawaii National History Association

Hawai'i Pacific University

Hawaii State Department of Education,

Teleschool Branch, Office of Curriculum, Instruction
& Student Support

Hawaii State Teachers Association

Hawaiian Airlines

John & Clifford Mirikitani Foundation

John Mirikitani

Keiki Care Center of Hawaii

KGMB9

John R. Halligan Charitable Fund

Organization of State Broadcasting Executives

Pigtails & Crewcuts

Rooms Hawaii

Ruby Tuesday Hawaii

Seven-Eleven Hawaii, Inc.

Stepping Stones Academy

Sony Hawaii Company

SOS Metals Island Recycling

University of Hawaii Professional Assembly

U.S. Pan Asian American Chamber of Commerce

WETA

ALII CIRCLE

Marian's Island Wide Catering

NetEnterprise

The PBS Hawaii Aloha Diners Club Card



The Spirit of Giving Runs in the Family

PBS Hawaii is grateful to Edith Watanabe for many reasons. She and her husband, Roger, have been proud supporters of the station for more than 22 years. Edith strongly believes in the value of enriching, educational programs and, she also believes in being an active participant.

For several years now, Edith has been a hard working and dedicated volunteer, and not only does she commit her own time, but every summer she also brings along her granddaughter, who participates in the Student Volunteer Program. The spirit of volunteerism for the benefit of our community is something Edith values and believes should be passed on to future generations.

When asked about her affinity for PBS Hawaii, Edith cites her many years as a science teacher to middle school students. "I love watching *NOVA* and have actually used it many times in the classroom.

The programs on PBS are so educational and thought-provoking," she said. Her other favorite shows include *Nature*, *Antiques Roadshow*, *Simply Ming* and the *BBC World News*.

As a token of our appreciation, we're happy to offer Edith and her husband the Aloha Diners Club Card each year when they renew their support. Edith said she enjoys using it to receive convenient discounts at some of her favorite places around town, like the Wedding Café in the Ward Warehouse, India Café in Kapahulu, and the Contemporary Museum in Makiki. The benefits of supporting PBS Hawaii aren't limited to what's seen on the television screen.

Pledge your support of \$65 or more to receive your PBS Hawaii Aloha Diners Club Card. Renew your support online at www.pbshawaii.org or call (808) 973-1187 on Oahu. From the neighbor islands, you can call us toll-free at (800) 238-4847.

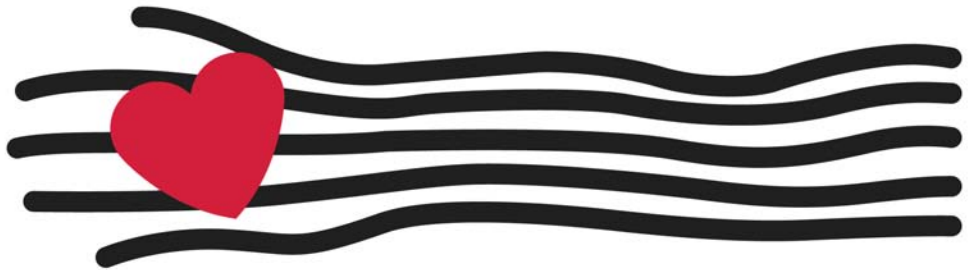


Volunteers Edith Watanabe and her granddaughter, Kim Matsunaga

If you'd like to support the high-quality, educational programming on PBS Hawaii by volunteering your time, call (808)973-0289.

Spread Aloha with Give Aloha

Make a donation to PBS Hawaii at any Foodland or Sack N Save checkout, and Foodland will make a donation to our organization, too!



give aloha

Foodland's Annual Community Matching Gifts Program

Make a donation to PBS Hawaii at any Foodland or Sack N Save checkout, and Foodland will make a donation to our organization, too!

How to Help:

1. Make a donation to PBS Hawaii (up to \$249 per person) at any Foodland or Sack N Save from September 1 - 30, 2009.
2. Foodland will match all donations up to a total of \$325,000 for all organizations combined.
3. If you would like to receive recognition for your gift, or renew your support of PBS Hawaii, mail us a copy of your receipt with your name, address and phone number.

ORGANIZATION CODE: 77428

www.ShopPBS.com



Start shopping today!

1. Log on to www.ShopPBS.com
2. Fill up your shopping cart
3. Enter code: **MEMBER_15** at checkout.

Don't forget to check out Sales and Special Offers and save up to 80% from our overstock sale!



You can now own PBS DVDs, CDs, books, toys and choose from over 6500 unique items online and get a 15% discount off your entire purchase!

“One person can make such a difference.”

“As a teacher, I feel strongly that children have the potential to be heroes. They are the citizens of the future – each one has so much to give. Public television encourages the idealism of children.

By remembering public television in my estate plan, I am leaving a rich legacy to the children of the future; we can create it.”

For more information please call PBS Hawaii’s Office of Special Gifts at (808) 973-0291.



A PLANNED GIFT THROUGH YOUR ESTATE.

PBS Hawaii PROGRAM LISTINGS

September 2009



AMERICAN MASTERS

Trumbo

September 2 | 8pm

With credits for *Kitty Foyle* and *Thirty Seconds Over Tokyo* to his name — and the anti-war novel *Johnny Got His Gun* — the young Dalton Trumbo was one of Hollywood's highest-paid writers. Refusing to testify before the House Un-American Activities Committee (HUAC) in 1947, he was part of the group known as the Hollywood Ten; convicted for contempt, he spent 11 months in federal prison and lost all rights to ply his craft. Writing 30 scripts under pseudonyms — he won an Oscar in 1956 for *The Brave One as Robert Reich* — he was not recognized again publicly until 1960, when Otto Preminger credited him on *Exodus* and Kirk Douglas did so on *Spartacus* — actions considered to mark the end of the blacklist. As late as 1993, Trumbo was awarded a posthumous Academy Award for *Roman Holiday* (1953). This program is adapted from his son Christopher's 2003 play and based on the remarkable letters Trumbo wrote during the devastation wrought by the "Red Scare" in mid-20th century.

PBS Hawaii is on the air seven days a week from 5 am to midnight. Viewers with cable service also have access to overnight programming. Viewers with cable service and high-definition (HD) TVs may watch PBS Hawaii in high-definition on Oceanic Time Warner Channel 1010.

CODING:

- (e) encore (HD) High-Definition
- (TBD) Programming to be determined
- (u) Updated Programming
- Pledge Programming

When possible, repeat broadcast dates during the month will be indicated in parentheses. All programs have closed-captioning. Late-breaking events may result in schedule changes. For more information and the latest schedules, please visit

www.pbshawaii.org.

1 TUESDAY

6:30 **The NewsHour with Jim Lehrer (HD)**

7:30 **Long Story Short with Leslie Wilcox**
Clyde Aikau, Pt. 1 (e)(HD)

8:00 **NOVA** *Is There Life on Mars?* More than four years after they landed on Mars, NASA's twin robot explorers, Spirit and Opportunity, have lasted 16 times longer and driven 20 times farther than expected. NOVA showcases the latest scientific results from the rovers and Phoenix, which are poised to reveal

provocative new clues in the tantalizing search for water and life on the Red Planet. **(e)(HD)**

9:00 **NOVA scienceNOW (HD)**

10:00 **P.O.V. *Ella Es el Matador (She Is the Matador)*** A fascinating profile of two female matadors currently in the arena: the acclaimed Mari Paz Vega and neophyte Eva Florencia. These women are gender pioneers by necessity. But what emerges as their truest motivation is their sheer passion — for bullfighting and the pursuit of a dream.

11:00 **Wide Angle** *Once Upon a Coup*
Cable Only

Midnight Charlie Rose

1:00 **Great Performances** *Karajan or Beauty as I See It*

2:00 **American Horizons: The Photographs of Art Sinsabaugh**

2 WEDNESDAY

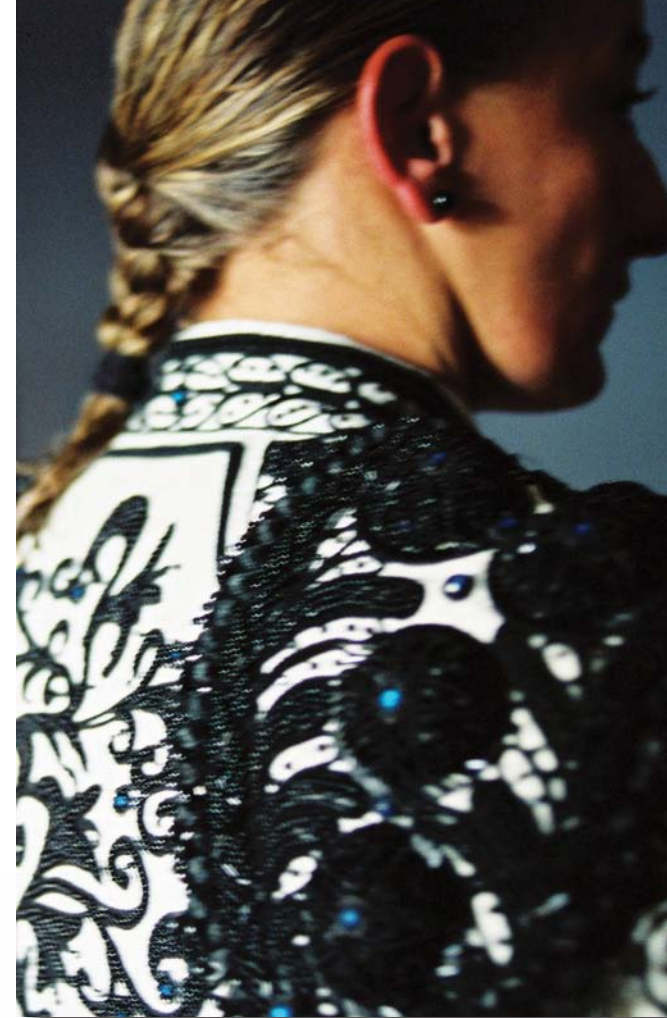
6:30 **The NewsHour with Jim Lehrer (HD)**

7:30 **Leahey & Leahey**

8:00 **American Masters** *Trumbo*

9:30 **PBS Previews** *The National Parks: America's Best Idea (e)*

10:00 **Wide Angle** *Time for School 3, Pt. 1* WIDE ANGLE concludes its season with "Time for School 3," the third dramatic installment of its critically acclaimed series that spotlights the global crisis in access to basic education.



P.O.V. *Ella Es el Matador (She Is the Matador)*

11:00 **Long Story Short with Leslie Wilcox**
Clyde Aikau, Pt. 1 (e)

11:30 **Leahey & Leahey (e)**

Midnight Charlie Rose

1:00 **Wide Angle** *Time for School 3, Pt. 1*

2:00 **NOVA** *Is There Life on Mars?*



Great Performances at the Met *Madama Butterfly*

3 THURSDAY

6:30 The NewsHour with Jim Lehrer (HD)

7:30 Insights on PBS Hawaii (e)

8:30 PBS Hawaii Presents *Lahaina: Waves of Change* The film documents two hundred years of rich and fascinating history in Lahaina, the first capital of the Hawaiian kingdom and later the center of the sugar industry in West Maui. Directed by Eddie Kamae and written by Robert Pennybacker and Steve Okino. (e)

9:30 e2 *Transport: Portland: A Sense of Place* (e)

10:00 Globe Trekker *Ice Trekking the Alps*

11:00 PBS Hawaii Presents *Lahaina: Waves of Change* (e)

Midnight Charlie Rose

1:00 P.O.V *Ella Es el Matador (She Is the Matador)*

2:00 NOVA scienceNOW

4 FRIDAY

6:30 The NewsHour with Jim Lehrer (HD)

7:30 Washington Week

8:00 Now on PBS

8:30 Bill Moyers Journal

9:30 Foreign Exchange

10:00 The McLaughlin Group

10:30 Insights on PBS Hawaii (e)

11:30 Washington Week (e)

Cable Only

Midnight Charlie Rose

1:00 Antiques Roadshow *Tucson, AZ*

2:00 The This Old House Hour

5 SATURDAY

Noon Knit & Crochet Today

12:30 Scheewe Art Workshop

1:00 Beads Baubles and Jewels

1:30 The Best of The Joy of Painting

2:00 Passport & Palette *Landscapes*

2:30 The Woodwright's Shop *Animated Wooden Toys*

3:00 The New Yankee Workshop *Turkey Table*

3:30 This Old House

4:00 Motorweek Ford *Taurus*

4:30 America's Test Kitchen from Cook's Illustrated *Easy Apple Desserts*

5:00 Martin Yan's China *The Land of Chefs* (e)

5:30 Simply Ming *Fish Sauce/Lemons* (e)

6:00 Primal Grill with Steven Raichlen *On The Bone*

6:30 Everyday Food *Cooking with Fruit*

7:00 Burt Wolf: Travels & Traditions *Islands of Bermuda* (e)

7:30 **Great Performances at the Met *Madama Butterfly*** Patricia Racette returns to the title role in Anthony Minghella's striking production, a new classic of the Met repertory. Patrick Summers conducts Puccini's heart-breaking tale of a Japanese geisha betrayed by her American lover. (HD)

10:00 Soundstage *Jackson Browne* (e) (HD)

11:00 Austin City Limits *Nick Lowe/The Swell Season: Glen Hansard & Marketa Irglova* (e) (HD)

Cable Only

Midnight Globe Trekker *Ice Trekking Alps*

1:00 Washington Week

1:30 Now on PBS

2:00 Bill Moyers Journal

6 SUNDAY

Noon Antiques Roadshow *Tucson, AZ*
Pt. 1 (e)

1:00 The This Old House Hour

2:00 NOVA scienceNOW (HD)

3:00 Insights on PBS Hawaii (e)

4:00 Long Story Short with Leslie Wilcox

Clyde Aikau, Pt. 1 (e)(HD)

4:30 Leahey & Leahey (e)

5:00 Rick Steves' Europe *Iran, Yesterday and Today (e)(HD)*

5:30 To the Contrary with Bonnie Erbe

6:00 Religion and Ethics NewsWeekly

6:30 Second Opinion: Taking Charge of your Healthcare *Addiction (e)*

7:00 Nature *Life in Death Valley* It is a visual wonderland, where imposing mountains rise almost two vertical miles above sprawling salt flats, and canyons are painted in strokes of blue, pink, violet and green from sunrise to sunset. This is Death Valley - one of the most inhospitable places on the planet. Nowhere else is a landscape so exquisite yet brutal, stunning yet harsh. Here, temperatures spike into the 130s, the earth cracks like broken clay and when the hot wind blows, all anyone can taste is dust and salt. Ironically, it is water that has shaped this super-arid home of true survivors. **(e)(HD)**



Nature *Life in Death Valley*

8:00 Masterpiece Mystery! *Inspector Lewis, Series II: Music to Die For* The worlds of no-rules boxing, Oxford dons and Cold War intrigue surround the death of a prominent don. Consequences of the investigation hit Lewis surprisingly close to home, revealing a little more about the loss he suffered since the death of his wife.

9:30 Rick Steves' Europe *Iran's Historic Capitols (e) (HD)*

10:00 Austin City Limits *R.E.M (e) (HD)*

11:00 History Detectives (e)
Cable Only

Midnight Soundstage *Jackson Browne*

1:00 Nature *Life in Death Valley*

2:00 Inside Operation Wildfire

7 MONDAY

6:30 The NewsHour with Jim Lehrer (HD)

7:30 Na Mele: Traditions in Hawaiian

Song *Jerry Santos and Friends (e)*

8:00 Antiques Roadshow *Tucson AZ, Pt. 2*

9:00 History Detectives

10:00 Wild Rivers: The Colorado

11:00 PBS Hawaii Prime Picks

Cable Only

Midnight Charlie Rose

1:00 Chihuly in the Hotshop

2:00 Nature *Life in Death Valley*

8 TUESDAY

6:30 The NewsHour with Jim Lehrer (HD)

7:30 Long Story Short with Leslie Wilcox

Clyde Aikau Pt. 2 (HD) (e)

8:00 NOVA *Mystery of the Megavolcano*

A remote lake in Southeast Asia conceals evidence of Earth's greatest volcanic cataclysm of the last 100,000 years. Miles beneath its placid surface lies a magma chamber that exploded so violently during the Ice Age that gases and ash may have encircled the globe and blotted out the sun for years on end. In a classic science detective story, NOVA pieces together the clues about this great catastrophe and probes questions about human evolution and Earth's fragile ecosystems. **(e) (HD)**

9:00 **Yellowstone: Land to Life** Filmmaker

John Grabowska presents a lyrical interpretation of the sweeping geologic story of Yellowstone, the world's first and most famous national park. Formation of glaciers, mountain ranges and the gigantic caldera of a supervolcano provide the saga of this special place. Filmed over two years

Families Stand Together: Feeling Secure in Tough Times

WEDNESDAY, SEPTEMBER 9 | 8PM ENCORE: SATURDAY, SEPTEMBER 12 | 8PM



This primetime television special features brief documentaries about real-life families and the story of a Muppet family coping with the ups and downs of these uncertain economic times. Hosted by Al Roker, Deborah Roberts and Elmo and his friends, the special will offer help, hope and strategies for families and will encourage children to express their feelings and ideas as their families adjust to a new life.

through all seasons, the film delves deeply into the significance behind the scenery and illuminates the intimate bonds between the landscape and biology — how Yellowstone's geology influences where life exists and how it evolves. **(HD)**

9:30 **PBS Previews** *The National Parks:*

America's Best Idea (e)

10:00 **P.O.V.** *The English Surgeon* What is it like to have power over life and death and yet to struggle with your own humanity? This is the story of acclaimed British neurosurgeon Henry Marsh, who has traveled to Ukraine for 15 years to treat patients who have been left to die; of

his friend and medical colleague in Kyiv who carries on the fight despite official hostility and archaic surgical conditions; and of a young patient who hopes that Marsh can save his life. Tense, heart-breaking and humorous, "The English Surgeon" is a remarkable depiction of one doctor's commitment to relieving suffering and of the emotional turmoil he undergoes in bringing hope to a desperate people.

11:30 **PBS Hawaii Prime Picks**

Cable Only

Midnight Charlie Rose

1:00 Wild Rivers: The Colorado



PBS Hawaii Presents *Keola Beamer & Friends: Bridging Worlds Through Music*

2:00 Antiques Roadshow *Tucson AZ*

9 WEDNESDAY

6:30 The NewsHour with Jim Lehrer

7:30 Leahey & Leahey

8:00 Families Stand Together: Feeling Secure in Tough Times See above.

9:00 Your Life, Your Money

10:00 Wide Angle *Time For School 3, Pt. 2*

11:00 Long Story Short with Leslie Wilcox
Clyde Aikau, Pt. 2 (e)(HD)

11:30 Leahey & Leahey (e)

Cable Only

Midnight Charlie Rose

1:00 Wide Angle *Time For School 3 Pt. 2*

2:00 NOVA *Mystery of the Megavolcano*

6:30 The NewsHour with Jim Lehrer (HD)

7:30 Insights on PBS Hawaii

8:30 PBS Hawaii Presents *Keola Beamer & Friends: Bridging Worlds Through Music*

Premiere singer/songwriter, composer and master Slack Key Guitarist

Keola Beamer leads an inter-cultural collaboration with musicians R. Carlos Nakai and Geoffrey Keezer. (e)(HD)

9:00 PBS Hawaii Presents *Washington Place: Hawai'i's First Home (e)*

9:30 e2 *Transport: Paris: Velo Liberte*

10:00 Globe Trekker *Globe Trekker Special: Galleons, Pirates & Treasure*

11:00 PBS Hawaii Presents *Keola Beamer & Friends: Bridging Worlds Through Music (e)(HD)*

11:30 PBS Hawaii Presents *Washington Place: Hawai'i's First Home (e)*

Cable Only

Midnight Charlie Rose

1:00 Your Life, Your Money

2:00 Families Stand Together: Feeling Secure in Tough Times

11 FRIDAY

6:30 The NewsHour with Jim Lehrer (HD)

7:30 Washington Week

8:00 Now on PBS

8:30 Bill Moyers Journal

9:30 Foreign Exchange

10:00 The McLaughlin Group

10:30 Insights on PBS Hawaii (e)

11:30 Washington Week (e)

Cable Only

Midnight Charlie Rose

1:00 Antiques Roadshow *Tucson, AZ*

2:00 The This Old House Hour

12 SATURDAY

Noon Knit & Crochet Today

12:30 Scheewe Art Workshop

1:00 Beads Baubles and Jewels

1:30 The Best of the Joy of Painting

2:00 Passport & Palette *Painting Outdoors*

2:30 The Woodwright's Shop *Hammer Veneer*

3:00 The New Yankee Workshop *Nantucket Settle*

3:30 This Old House

4:00 Motorweek *Power & Economy Drive*

4:30 America's Test Kitchen from Cook's Illustrated *Soups of the Day*
5:00 Martin Yan's China *Shanxi Favorites (e)*
5:30 Simply Ming *Lemongrass/Extra Virgin Olive Oil (e)*
6:00 Primal Grill with Steven Raichlen *In a Hurry*
6:30 Everyday Food *Soups and Salads*
7:00 Burt Wolf: Travels & Traditions *Cruising the Rhine (e)*
7:30 OpenRoad *Exploring the West*
8:00 Families Stand Together: Feeling Secure in Tough Times See page 19. (e)
9:00 Following Dreams
10:00 Soundstage *One Republic (e) (HD)*
11:00 Austin City Limits *R.E.M (e) (HD)*
Cable Only
Midnight Globe Trekker *Globe Trekker Special: Galleons, Pirates & Treasure*
1:00 Washington Week
1:30 NOW on PBS
2:00 Bill Moyers Journal

13 SUNDAY

Noon Antiques Roadshow *Tucson, AZ Pt. 2 (e)*
1:00 The This Old House Hour
2:00 NOVA *Mystery of the Megavolcano (e) (HD)*
3:00 Insights on PBS Hawaii (e)



Masterpiece Mystery Inspector Lewis, Series II: Life Born of Fire

4:00 Long Story Short with Leslie Wilcox *Clyde Aikau, Pt. 2 (e) (HD)*
4:30 Leahey & Leahey (e)
5:00 Life (Part 2) *Boomer Marriage* What are the secrets to marriages that last decades? Former Ms. magazine editor Suzanne Braun Levine ("Fifty Is the New Fifty: Ten Life Lessons for Women in Second Adulthood"), therapist Terrence Real ("The New Rules of Marriage: What You Need to Know to Make Love Work") and psychiatrist Janet Taylor discuss how baby boomers have changed the face of marriage.
5:30 To the Contrary with Bonnie Erbe
6:00 Religion and Ethics NewsWeekly
6:30 Second Opinion: Taking Charge of your Healthcare *Migraine (e)*

7:00 Nature *The Good, the Bad, the Grizzly* Bears have made a strong comeback in Yellowstone National Park, but proposals to remove them from protected status under the Endangered Species Act cast doubt upon their future. NATURE examines this compelling environmental issue.(e) (HD)
8:00 Masterpiece Mystery Inspector Lewis, Series II: Life Born of Fire A serial killer seems to be targeting a religious group, "The Garden," which claims to give guidance to lost souls. As he learns more about the group and their true purpose, Lewis begins to question his trust of Hathaway after discovering that his young sergeant has dangerous personal connections to the organization.



Long Story Short with Leslie Wilcox
Ben Cayetano, Pt. 1

- 9:30 **Life (Part 2)** *Boomer Marriage (e)*
- 10:00 **Austin City Limits** *Foo Fighters (e) (HD)*
- 11:00 **History Detectives (e)**
- Midnight Soundstage** *One Republic*
- 1:00 **Wide Angle** *Time for School 3 Pt. 2*
- 2:00 **Inside** *Hong Kong's Big Band*

14 MONDAY

- 6:30 **The NewsHour with Jim Lehrer (HD)**
- 7:30 **Na Mele: Traditions in Hawaiian Song**
Bob Brozman; Cyril Pahinui; Led Kaapana (e)
- 8:00 **Antiques Roadshow** *Tucson, AZ Pt. 3*
- 9:00 **History Detectives**
- 10:00 **Note by Note: The Making of Steinway**

- 11:00 **PBS Hawaii Prime Picks**
Cable Only
- Midnight Charlie Rose**
- 1:00 **Note by Note: The Making of Steinway**
- 2:00 **Nature** *The Good, the Bad, and the Grizzly*

15 TUESDAY

- 6:30 **The NewsHour with Jim Lehrer (HD)**
- 7:30 **Long Story Short with Leslie Wilcox**
Ben Cayetano, Pt. 1 In the first of a two-part Long Story Short, Ben Cayetano talks about growing up in Kalihi and a past only recently revealed in his self-titled memoir. He talks openly about being raised by his father and how he discovered, yet never discussed, the truth of his birth. Looking back, Ben shares with Leslie how personal encounters with ethnic discrimination and other early experiences informed the important decisions of his life, and led eventually to a career driven by his desire to advocate for social justice. **(HD)**
- 8:00 **NOVA** *Arctic Dinosaurs* See page 23. **(e) (HD)**
- 9:00 **Retirement Revolution** *The New Reality*
From light-hearted stories about self-defense and second careers to solid advice about money, health and Medicare, this program features experts who analyze the financial

problems of retirement and demonstrate ways to richer, healthier retirement years. Paula Zahn hosts. **(HD)**

- 10:30 **P.O.V.** *The Principal Story*
- 11:30 **PBS Hawaii Prime Picks**
Cable Only
- Midnight Charlie Rose**
- 1:00 **Note by Note: The Making of Steinway**
- 2:00 **Antiques Roadshow** *Tucson, AZ*

16 WEDNESDAY

- 6:30 **The NewsHour with Jim Lehrer (HD)**
- 7:30 **Leahey & Leahey**
- 8:00 **Live From Lincoln Center** *New York Philharmonic Opening Night Gala Concert*
Live from Avery Fisher Hall, this concert launches the New York Philharmonic's 168th season and Alan Gilbert's first as the orchestra's music director. The program will open with an overture written especially for the occasion by composer-in-residence Magnus Lindberg and will feature Berlioz' Symphony fantastique and Messiaen's Poèmes pour mi with renowned soprano Renée Fleming. Alec Baldwin hosts.
- 10:00 **Blood Detectives**
- 11:00 **Long Story Short with Leslie Wilcox**
Ben Cayetano Pt. 1 (e)(HD)
- 11:30 **Leahey & Leahey (e)**
Cable Only
- Midnight Charlie Rose**

NOVA Arctic Dinosaurs

Tuesday, September 15 | 8PM

Sunday, September 20 | 2PM

How is it that dinosaurs managed to survive and even thrive in the gloom of the dark and frigid polar regions? This is one of today's most intriguing, little-known enigmas in paleontology. Now, a unique field expedition, covered exclusively by *NOVA*, sets out for Alaska's North Slope to defrost a jackpot of new fossil clues. With the help of stunning CGI, *NOVA* breathes life into the polar dinosaurs' lives and environment in vivid detail. The team of researchers combines extreme engineering and perilous fossil hunting, including digging a tunnel into the permafrost in order to collect the dinosaur bones.



1:00 Blood Detectives

2:00 NOVA Arctic Dinosaurs

17 THURSDAY

6:30 The NewsHour with Jim Lehrer (HD)

7:30 Insights on PBS Hawaii

8:30 PBS Hawaii Presents *From Wharf Rats to the Lord of the Docks: The Life and Times of Harry Bridges* Directed by Academy Award© winning director and cinematographer Haskell Wexler, the film highlights a truly unique event – Ian Ruskin performing his one-man to a packed house of 1000 longshore workers in San Pedro, California.

10:00 Globe Trekker *California*

11:00 PBS Hawaii Presents *From Wharf Rats to the Lord of the Docks: The Life and Times of Harry Bridges* (e)

Cable Only

12:30 Charlie Rose

1:30 Retirement Revolution *The New Reality*

18 FRIDAY

6:30 The NewsHour with Jim Lehrer (HD)

7:30 Washington Week

8:00 Now on PBS

8:30 Bill Moyers Journal

9:30 Foreign Exchange

10:00 The McLaughlin Group

10:30 Insights on PBS Hawaii (e)

11:30 Washington Week (e)

Cable Only

Midnight Charlie Rose

1:00 Antiques Roadshow *Tucson, AZ*

2:00 The This Old House Hour

19 SATURDAY

Noon Knit & Crochet Today

12:30 Scheewe Art Workshop

1:00 Beads, Baubles and Jewels

1:30 The Best of the Joy of Painting

2:00 Passport & Palette *Garden Painting 2*

2:30 The Woodwright's Shop *Holly Wood Spectacular*

3:00 The New Yankee Workshop *Tiger Maple Washstand*



Great Performances *Vienna Philharmonic Summer Concert 2009*

3:30 This Old House

4:00 Motorweek *Chevrolet Equinox*

4:30 America's Test Kitchen from Cook's Illustrated *Bringing Home*

5:00 Martin Yan's China *Wu Zhen Water Village (e)*

5:30 Simply Ming *Anise/Oranges (e)*

6:00 Primal Grill with Steven Raichlen *In the Wild*

6:30 Chefs A'Field *Counting Sheep*

7:00 Burt Wolf: Travels & Traditions *Cruising France (e)*

7:30 OpenRoad *Hawaii Volcanoes and Midway*

8:00 Great Performances *Vienna Philharmonic Summer Concert 2009* The renowned Vienna Philharmonic presents an open-air concert in the magnificent gardens of Austria's Imperial Schönbrunn Palace.

Daniel Barenboim leads the ensemble in a rousing evening of works inspired by the night. Highlights include Wolfgang Amadeus Mozart's hallmark "A Little Night Music," Manuel de Falla's "Nights in the Gardens of Spain" (featuring Maestro Barenboim as pianist) and the characteristically Viennese "1001 Nights Waltz" by the Waltz King himself, Johann Strauss.

9:30 The Big Squeeze

10:00 Soundstage *Sugarland (e) (HD)*

11:00 Austin City Limits *Foo Fighters (e) (HD)*

Cable Only

Midnight Globe Trekker *California*

1:00 Washington Week

1:30 Now on PBS

2:00 Bill Moyers Journal

20 SUNDAY

Noon Antiques Roadshow *Tucson, AZ Pt. 3 (e)*

1:00 The This Old House Hour

2:00 NOVA *Arctic Dinosaurs (e) (HD)*

3:00 Insights on PBS Hawaii (e)

4:00 Long Story Short with Leslie Wilcox *Ben Cayetano, Pt. 1* See page 21. **(e) (HD)**

4:30 Leahey & Leahey (e)

5:00 Life (Part 2) *Generation Gap*

5:30 To the Contrary with Bonnie Erbe

6:00 Religion and Ethics NewsWeekly

6:30 Second Opinion: Taking Charge of your Healthcare *Breast Cancer Recurrence (e)*

7:00 Nature *Violent Hawaii (e) (HD)*

8:00 Masterpiece Mystery *Inspector Lewis, Series II: The Great and the Good*

9:30 Life (Part 2) *Generation Gap (e)*

10:00 Austin City Limits *Sarah McLachlan/Duffy (e) (HD)*

11:00 History Detectives (e)

Cable Only

Midnight Soundstage *Sugarland*

1:00 Great Lodges of The National Parks

2:00 Inside Speed Week

21 MONDAY

6:30 The NewsHour with Jim Lehrer (HD)

7:30 Na Mele: Traditions in Hawaiian Song *Na Pali; Manuakepa (e)*



NOVA *The Ghost in Your Genes* Tuesday, Sept. 22 | 8PM

In a provocative report from the frontiers of biology, *NOVA* explores new findings that call into question the long-held belief that all inherited traits are passed on by our genes. The fast-growing field of epigenetics investigates hidden influences that could affect not only our health today but that of our descendants far into the future. It now seems that our environment makes small chemical changes to our DNA without affecting the gene's overall makeup. To put it another way, epigenetics adds to our DNA another layer that acts as a control system of "switches." *NOVA* explores this fascinating new idea, interviewing top scientists in the field and following what could be a paradigm shift in the way we think about inheritance and genes.

9:00 History Detectives
10:00 Independent Lens *Our Disappeared/
Nuestros Desaparecidos*
11:30 PBS Hawaii Prime Picks
Cable Only
Midnight Charlie Rose
1:00 Great Lodges of the National Parks
2:00 Nature *Violent Hawaii*

22 TUESDAY

6:30 The NewsHour with Jim Lehrer (HD)
7:30 Long Story Short with Leslie Wilcox
Ben Cayetano, Pt. 2 In the second of a two-part interview, Ben Cayetano explains how his desire to serve a greater public led to nearly thirty years in public office. With his trademark candor, he reveals how his priority, which put the people before personal gain, was often at odds with how the game of politics is played. He speaks frankly about his disdain for political quid pro quo, and how and why he believes it plays an even larger part of the landscape today. **(HD)**

8:00 NOVA *The Ghost in Your Genes* See sidebar. **(e) (HD)**

9:00 Killer Stress: A National Geographical Special Stress. It's always been there to save our lives. It's what made us run from predators and enabled us to take down prey. Some of us are wallowing in corrosive hormones; for the first time, scientists can reveal just how measurable and dangerous that exposure can be.

MacArthur "Genius Grant" recipient and Stanford University neurobiologist Robert Sapolsky and National Geographic search for answers to why stress seems to be killing us. **(e)**

10:00 P.O.V. *Bronx Princess*
11:00 PBS Hawaii Prime Picks
Cable Only
Midnight Charlie Rose
1:00 Killer Stress: A National Geographical Special
2:00 Antiques Roadshow *Spokane, WA*

23 WEDNESDAY

6:30 The NewsHour with Jim Lehrer (HD)
7:30 Leahey & Leahey
8:00 Including Samuel
9:00 Going on 13 From Tweety Bird to Bow Wow, double dutch to chat rooms, Daddy's girls to first deceptions, watch as Ariana, Isha, Rosie, and Esme let go of childhood and fumble — or sprint — toward an uncertain future. This is puberty and for each of these girls of color, it's a whirlwind of change and new choices. Without flinching, GOING ON 13 enters their world as they negotiate the precious, precarious moments between being a little girl and becoming a young woman.

10:00 Wallace Stegner
11:00 Long Story Short with Leslie Wilcox
Ben Cayetano, Pt. 2 See page 23. **(e) (HD)**



Jerusalem: Center of the World

11:30 **Leahey & Leahey (e)**

Cable Only

Midnight **Charlie Rose**

1:00 **Wallace Stegner**

2:00 **NOVA** *The Ghost in your Genes*

24 THURSDAY

6:30 **The NewsHour with Jim Lehrer (HD)**

7:30 **Insights on PBS Hawaii**

8:30 **PBS Special Report on Health Care**

Reform THE NEWSHOUR, NOW ON PBS and TAVIS SMILEY collaborate to examines the urgent topic of health care reform. As Congress weighs legislation to provide universal health care in the U.S., correspondents will provide analysis, discussion, insight and engagement.

10:00 **Globe Trekker** *Mozambique*

11:00 **PBS Special Report on Health Care**

Reform (e)

Cable Only

12:30 **Charlie Rose**

1:30 **The Great American Seafood Cook Off**

2:00 **Great Lodges of The National Parks**

25 FRIDAY

6:30 **The NewsHour with Jim Lehrer (HD)**

7:30 **Washington Week**

8:00 **Now on PBS**

8:30 **Bill Moyers Journal**

9:30 **Foreign Exchange**

10:00 **The McLaughlin Group**

10:30 **Insights on PBS Hawaii (e)**

11:30 **Washington Week (e)**

Cable Only

Midnight **Charlie Rose**

1:30 **Antiques Roadshow**

2:00 **The This Old House Hour**

26 SATURDAY

Noon **Knit & Crochet Today**

12:30 **Scheewe Art Workshop**

1:00 **Beads, Baubles and Jewels**

1:30 **The Best of the Joy of Painting**

2:00 **Passport & Palette** *Still Life Outdoors*

2:30 **The Woodwright's Shop** *A Viking Tool Chest*

3:00 **The New Yankee Workshop** *Dough Box*

3:30 **This Old House**

4:00 **Motorweek** *Porsche Panamera*

4:30 **America's Test Kitchen from Cook's Illustrated** *Everyone's Favorite Cake*

5:00 **Martin Yan's China** *Schoolmates Today (e)*

5:30 **Simply Ming** *Chinese Fermented Black Beans/Butter (e)*

6:00 **Primal Grill with Steven Raichlen** *By the Sea*

6:30 **Chefs A'Field** *King of Alaska*

7:00 **Burt Wolf: Travels & Traditions** *Gateway to Scotland (e)*

7:30 **OpenRoad** *Half Dome and Evergreen Lodge*

8:00 **Jerusalem: Center of the World**

Jerusalem is arguably one of the most fascinating and complicated cities in the world. This program draws on religious texts, the science of archaeology and oral

traditions passed on through millennia to try to determine why this small city has occupied the minds of so many for so long. (e)(HD)

10:00 Soundstage *Death Cab for Cutie* (e) (HD)

11:00 Austin City Limits *Sarah McLachlan/Duffy* (e) (HD)

Cable Only

Midnight Globe Trekker *Mozambique*

1:00 Washington Week

1:30 Now on PBS

2:00 Bill Moyers Journal

27 SUNDAY

Noon Antiques Roadshow *Spokane, WA Pt. 1* (e)

1:00 The This Old House Hour

2:00 NOVA *The Ghost in Your Genes* (e)

3:00 Insights on PBS Hawaii (e)

4:00 Long Story Short with Leslie Wilcox
Ben Cayetano, Pt. 2 See page 23. (e)(HD)

4:30 Leahey & Leahey (e)

5:00 Life (Part 2) *Caregiving*

5:30 To the Contrary with Bonnie Erbe

6:00 Religion and Ethics NewsWeekly

6:30 Second Opinion: Taking Charge of your Healthcare *Osteoarthritis* (e)

7:00 The National Parks: America's Best Idea *The Scripture of Nature (1851 - 1890)* In 1851, word spreads across the country of a beautiful area of

California's Yosemite Valley, attracting visitors who wish to exploit the land's scenery for commercial gain and those who wish to keep it pristine. (HD)

9:00 The National Parks: America's Best Idea *The Scripture of Nature (1851 - 1890)* (e) (HD)

11:00 History Detectives (e)

Cable Only

Midnight Soundstage *Death Cab for Cutie*

1:00 Including Samuel

2:00 Great Lodges of the National Parks
Pacific Northwest Lodges

28 MONDAY

6:30 The NewsHour with Jim Lehrer (HD)

7:30 Na Mele: Traditions in Hawaiian Song *Keola Beamer, Nona Beamer, Moana Beamer* (e)

8:00 The National Parks: America's Best Idea *The Last Refuge (1890 - 1915)*

By the end of the 19th century, widespread industrialization has left many Americans worried about whether the country - once a vast wilderness - will have any pristine land left. At the same time, poachers in the parks are rampant, and visitors think nothing of littering or carving their names near iconic sites like Old Faithful. (HD)



Long Story Short with Leslie Wilcox *Kawika Kahiapo*

10:30 The National Parks: America's Best Idea *The Last Refuge (1890 - 1915)* (e) (HD)

Cable Only

1:00 Charlie Rose

2:00 Going on 13

29 TUESDAY

6:30 The NewsHour with Jim Lehrer (HD)

7:30 Long Story Short with Leslie Wilcox
Kawika Kahiapo Leslie Wilcox talks story with Na Hoku Hanohano-award-winning musician Kawika Kahiapo about fulfilling his childhood dream of becoming a professional musician and his dedication to giving back to the community. (e) (HD)

The National Parks: America's Best Idea

ACCLAIMED FILMMAKER KEN BURNS

Since the Academy Award nominated *Brooklyn Bridge* in 1981, Ken has gone on to direct and produce some of the most acclaimed historical documentaries ever made. The late historian Stephen Ambrose said of his films, "More Americans get their history from Ken Burns than any other source." A December 2002 poll conducted by Real Screen Magazine named Ken Burns and Robert Flaherty as the "most influential documentary makers" of all time. Ken's films have won ten Emmy Awards and two Oscar nominations, and in September of 2008, at the News & Documentary Emmy Awards, Ken was honored by the Academy of Television Arts & Sciences with a Lifetime Achievement Award.



8:00 The National Parks: America's Best

Idea *The Empire of Grandeur*

(1915 - 1919) In the early 20th century, America has a dozen national parks, but they are a haphazard patchwork of special places under the supervision of different federal agencies.

The conservation movement, after failing to stop the Hetch Hetchy dam, pushes the government to establish one unified agency to oversee all the parks, leading to the establishment of the National Park Service in 1916. **(HD)**

10:00 The National Parks: America's Best

Idea *The Empire of Grandeur* (1915 - 1919) **(e) (HD)**

Cable Only

Midnight Charlie Rose

1:00 Paving the Way: The National Park-To-Park Highway

2:00 Nature *A Mystery in Alaska*

30 WEDNESDAY

6:30 The NewsHour with Jim Lehrer (HD)

7:30 Leahey & Leahey

8:00 The National Parks: America's Best Idea *Going Home* (1920 - 1933) The advent of the automobile allows more people than ever before to visit the parks. In North Carolina, Horace Kephart, a reclusive writer, and George Masa, a Japanese immigrant, launch a campaign

to protect the last strands of virgin forest in the Smoky Mountains by establishing it as a park. In Wyoming, John D. Rockefeller Jr. begins quietly buying up land in the Teton Mountain Range and valley in a secret plan to donate it to the government as a park. **(HD)**

10:00 The National Parks: America's Best Idea *Going Home* (1920 - 1933) **(e) (HD)**

Cable Only

Midnight Charlie Rose

1:00 Paving the Way: The National Park-To-Park Highway

2:00 Antiques Roadshow *Spokane, WA*

DIGITAL CABLE CHANNEL 443

4:30am	Sid the Science Kid
5am	Super Why!
5:30am	Dinosaur Train
6am	Between the Lions
6:30am	Arthur
7am	Fetch! with Ruff Ruffman
7:30am	The Electric Co.
8am	Maya & Miguel
8:30am	Cyberchase
9am	Martha Speaks
9:30am	Dragon Tales
10am	Sesame Street
10:30am	
11am	Barney & Friends
11:30am	Clifford the Big Red Dog
Noon	Curious George
12:30pm	Sid the Science Kid
1pm	Super Why!
1:30pm	Dinosaur Train
2pm	Between the Lions
2:30pm	Arthur
3pm	Fetch! with Ruff Ruffman
3:30pm	The Electric Co.
4pm	Maya & Miguel

4:30pm	Cyberchase
5pm	Martha Speaks
5:30pm	Dragon Tales
6pm	Sesame Street
6:30pm	
7pm	Barney & Friends
7:30pm	Clifford the Big Red Dog
8pm	Curious George
8:30pm	Sid the Science Kid
9pm	Super Why!
9:30pm	Dinosaur Train
10pm	Between the Lions
10:30pm	Arthur
11pm	Fetch! with Ruff Ruffman
11:30pm	The Electric Co.
Midnight	Maya & Miguel
12:30am	Cyberchase
1am	Martha Speaks
1:30am	Dragon Tales
2am	Sesame Street
2:30am	
3am	Barney & Friends
3:30am	Clifford the Big Red Dog
4am	Curious George

DAYTIME SCHEDULE

SEPTEMBER 2009

UPDATED SCHEDULE CHANGES INDICATED IN RED

Program schedules are subject to change. For program and schedule updates, visit our website:

www.pbshawaii.org



SERIES PREMIERE SEPT. 7

Dinosaur Train

Weekdays | 8:30AM

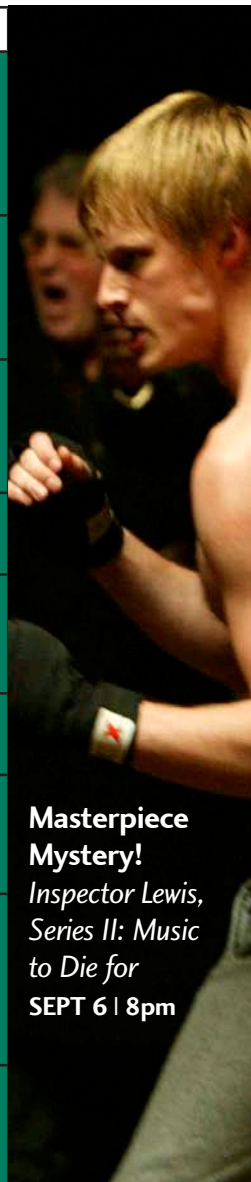
Saturdays | 10:30AM

The new series embraces and celebrates the fascination that preschoolers have with both dinosaurs and trains while encouraging basic scientific thinking and skills as the audience learns about natural science, natural history and paleontology.

	MONDAY - FRIDAY	SATURDAY	SUNDAY
5am	It's A Big Big World	Boohbah	Make Way For Noddy
5:30	WordWorld	Angelina Ballerina	Bob the Builder
6am	Sesame Street	Mr. Rogers' Neighborhood	Dragon Tales
6:30		DragonflyTV	Mr. Rogers' Neighborhood
7am	Curious George	Arthur	Sesame Street
7:30	Sid the Science Kid	Between the Lions	
8am	Super Why!	Caillou	Super Why!
8:30	Dinosaur Train	Clifford the Big Red Dog	Clifford's Puppy Days
9am	Barney & Friends	Mama Mirabelle's Home Movies	Barney & Friends
9:30	Clifford the Big Red Dog	Dragon Tales	Sid the Science Kid
10am	Martha Speaks	Thomas & Friends	Arthur
10:30	DOE/Dragon Tales	Dinosaur Train	Dragon Tales
11am	DOE/Caillou	It's A Big Big World	Curious George
11:30	Sesame Street	The Electric Company	Zula Patrol
noon		Gourmet's Diary of A Foodie	Antiques Roadshow
12:30	It's A Big Big World	Scheewe Art Workshop	
1pm	DOE/Sid the Science Kid	Beads, Baubles, & Jewels	The This Old House Hour
1:30	WordWorld	The Best of the Joy of Painting	
2pm	Curious George	Passport & Palette	NOVA scienceNow
2:30	Between the Lions	Landscapes Through Time	
3pm	Arthur	New Yankee Workshop	Island Insights
3:30	WordGirl	This Old House	
4pm	Fetch! with Ruff Ruffman	Motorweek	Long Story Short
4:30	The Electric Co.	America's Test Kitchen	Leahey & Leahey
5pm	Food at Five	Martin Yan's China	Life (Part 2)
5:30	Nightly Business Report	Simply Ming	To The Contrary
6pm	BBC World News	Primal Grill with Steven Raichlen	Religion & Ethics NewsWeekly

WEEKLY EVENING SCHEDULE SEPTEMBER 1-6

	1 TUESDAY	2 WEDNESDAY	3 THURSDAY	4 FRIDAY	5 SATURDAY	6 SUNDAY
7:30	Long Story Short with Leslie Wilcox <i>Clyde Aikau, Pt. 1</i>	Leahey & Leahey	Insights on PBS Hawaii	Washington Week	Great Performances at the Met <i>Madama Butterfly</i>	(7:00) Nature <i>Life in Death Valley</i>
8:00	NOVA <i>Is There Life on Mars?</i>	American Masters <i>Trumbo</i>		Now on PBS		Inspector Lewis, Series II: Music to Die for
8:30			PBS Hawaii Presents <i>Lahaina: Waves of Change</i>	Bill Moyers Journal		
9:00	NOVA scienceNOW	PBS Previews <i>The National Parks: America's Best Idea</i>	E2 Transport: Portland: A Sense of Place	Foreign Exchange	Rick Steves' Europe <i>Iran's Historic Capitols</i>	
9:30						
10:00	P.O.V <i>Ella Es el Matador</i>	Wide Angle Time for School 3 Pt. 1	Globe Trekker <i>Ice Trekking the Alps</i>	The McLaughlin Group	Soundstage <i>Jackson Browne</i>	Austin City Limits <i>R.E.M</i>
10:30				Insights on PBS Hawaii		
11:00	Wide Angle <i>Once Upon a Coup</i>	PBS Hawaii Prime Picks	PBS Hawaii Presents <i>Lahaina: Waves of Change</i>	Washington Week	Austin City Limits <i>Nick Lowe/The Swell Season: Glen Hansard & Marketa Irglova</i>	History Detectives
11:30						



Masterpiece Mystery!
Inspector Lewis, Series II: Music to Die for
SEPT 6 | 8pm

WEEKLY EVENING SCHEDULE SEPTEMBER 7 - 13

	7 MONDAY	8 TUESDAY	9 WEDNESDAY	10 THURSDAY	11 FRIDAY	12 SATURDAY	13 SUNDAY
7:30	Na Mele <i>Jerry Santos and Friends</i>	Long Story Short with Leslie Wilcox <i>Clyde Aikau Pt. 2</i>	Leahey & Leahey	Insights on PBS Hawaii	Washington Week	OpenRoad <i>Exploring the West</i>	(7:00) Nature <i>The Good, the bad, the Grizzly</i>
8:00	Antiques Roadshow <i>Tucson AZ, Pt. 2</i>	NOVA <i>Mystery of the Megavolcano</i>	Families Stand Together: Feeling Secure in Tough Times		Now on PBS	Families Stand Together: Feeling Secure in Tough Times	Masterpiece Mystery <i>Inspector Lewis, Series II: Life Born of Fire</i>
8:30				PBS Hawaii Presents <i>Keola Beamer & Friends</i>	Bill Moyers Journal		
9:00	History Detectives	Yellowstone: Land to Life	Your Life, Your Money	PBS Hawaii Presents <i>Washington Place: Hawai'i's First Home</i>	Following Dreams	Life (Part 2) <i>Boomer Marriage</i>	
9:30		PBS Previews: <i>The National Parks: America's Best Idea</i>		e2 Transort: Paris: Velo Liberte			Foreign Exchange
10:00	Wild Rivers: The Colorado	P.O.V <i>The English Surgeon</i>	Wide Angle Time <i>For School 3, Pt. 2</i>	Globe Trekker <i>Globe Trekker Special: Galleons, Pirates & Treasure</i>	The McLaughlin Group	Soundstage One Republic	Austin City Limits <i>Foo Fighters</i>
10:30				PBS Hawaii Presents <i>Keola Beamer & Friends</i>	Insights on PBS Hawaii		
11:00	PBS Hawaii Prime Picks	PBS Hawaii Prime Picks	Long Story Short with Leslie Wilcox <i>Clyde Aikau, Pt. 2</i>	PBS Hawaii Presents <i>Washington Place: Hawai'i's First Home</i>	Washington Week	Austin City Limits <i>R.E.M</i>	History Detectives
11:30			Leahey & Leahey	PBS Hawaii Presents <i>Washington Place: Hawai'i's First Home</i>			

WEEKLY EVENING SCHEDULE

SEPTEMBER 14 - 20

	14 MONDAY	15 TUESDAY	16 WEDNESDAY	17 THURSDAY	18 FRIDAY	19 SATURDAY	20 SUNDAY
7:30	Na Mele <i>Bob Brozman; Cyril Pahinui; Led Kaapana</i>	Long Story Short with Leslie Wilcox <i>Ben Cayetano, Pt. 1</i>	Leahey & Leahey	Insights on PBS Hawaii	Washington Week	Open Road <i>Hawaii Volcanoes and Midway</i>	(7:00) Nature <i>Violent Hawaii</i>
8:00	Antiques Roadshow <i>Tucson, AZ Pt. 3</i>	NOVA <i>Arctic Dinosaurs</i>	Live From Lincoln Center <i>New York Philharmonic Opening Night Gala Concert</i>	PBS Hawaii Presents From Wharf Rats to the Lord of the Docks: The Life and Times of Harry Bridges	Now on PBS	Great Performances <i>Vienna Philharmonic Summer Concert 2009</i>	Masterpiece Mystery <i>Inspector Lewis, Series II: The Great and the Good</i>
8:30					Bill Moyers Journal		
9:00	History Detectives	Retirement Revolution The New Reality	Blood Detectives	Globe Trekker <i>California</i>	The McLaughlin Group	Soundstage <i>Sugarland</i>	Austin City Limits <i>Sarah McLachlan/ Duffy</i>
9:30					Foreign Exchange		
10:00	Note by Note: The Making of Steinway	P.O.V <i>The Principle Story</i>	Leahey & Leahey	PBS Hawaii Presents From Wharf Rats to the Lord of the Docks: The Life and Times of Harry Bridges	Insights on PBS Hawaii	Austin City Limits Foo Fighters	History Detectives
10:30					Washington Week		
11:00	PBS Hawaii Prime Picks	PBS Hawaii Prime Picks	Leahey & Leahey	PBS Hawaii Presents From Wharf Rats to the Lord of the Docks: The Life and Times of Harry Bridges	Washington Week	Austin City Limits Foo Fighters	History Detectives
11:30							

WEEKLY EVENING SCHEDULE SEPTEMBER 21 - 27

	21 MONDAY	22 TUESDAY	23 WEDNESDAY	24 THURSDAY	25 FRIDAY	26 SATURDAY	27 SUNDAY
7:30	Na Mele <i>Na Pali;</i> <i>Maunakepa</i>	Long Story Short with Leslie Wilcox <i>Ben Cayetano, Pt. 2</i>	Leahey & Leahey	Insights on PBS Hawaii	Washington Week	OpenRoad <i>Half Dome and Evergreen Lodge</i>	(7:00) The National Parks: America's Best Idea <i>The Scripture of Nature (1851-1890)</i>
8:00	Antiques Roadshow <i>Spokane, WA Pt. 1</i>	NOVA <i>The Ghost in Your Genes</i>	Including Samuel		Now on PBS	Jerusalem: Center of the World	
8:30				Killer Stress: A National Geographical Special	Going on 13		
9:00	History Detectives	P.O.V <i>Bronx Princess</i>	Wallace Stegner				Globe Trekker <i>Mozambique</i>
9:30				PBS Hawaii Prime Picks	Long Story Short with Leslie Wilcox <i>Ben Cayetano, Pt. 2</i>	PBS Special Report on Health Care Reform	
10:00	Independent Lens <i>Our Disappeared/ Nuestros Desaparecidos</i>	PBS Hawaii Prime Picks	Long Story Short with Leslie Wilcox <i>Ben Cayetano, Pt. 2</i>				PBS Special Report on Health Care Reform
10:30				PBS Hawaii Prime Picks	Leahey & Leahey	Washington Week	
11:00	PBS Hawaii Prime Picks	Leahey & Leahey	Washington Week				History Detectives

WEEKLY EVENING SCHEDULE SEPTEMBER 28 - 30

	28 MONDAY	29 TUESDAY	30 WEDNESDAY
7:30	Na Mele Keola <i>Beamer, Nona Beamer, Moana Beamer</i>	Long Story Short with Leslie Wilcox <i>Kawika Kahiapo</i>	Leahey & Leahey
8:00	The National Parks: America's Best Idea <i>The Last Refuge (1890 - 1915)</i>	The National Parks: America's Best Idea <i>The Empire of Grandeur (1915-1919)</i>	The National Parks: America's Best Idea <i>Going Home (1920 - 1933)</i>
8:30			
9:00			
9:30			
10:00	The National Parks: America's Best Idea <i>The Last Refuge (1890 - 1915)</i>	The National Parks: America's Best Idea <i>The Empire of Grandeur (1915-1919)</i>	The National Parks: America's Best Idea <i>Going Home (1920 - 1933)</i>
10:30			
11:00			
11:30			



P.O.V.
Bronx Princess
SEPT 22 | 10pm

Rocky Otoo, the Bronx-bred teenage daughter of Ghanaian parents, is no pushover. She's a sassy high-achiever bound for college. With freedom in sight, Rocky rebels against her mother's rules. When their relationship reaches a breaking point, Rocky flees to her father, a chief in Ghana. What follows is captured in "Bronx Princess," a tumultuous coming-of-age story set in a homeland both familiar and strange. Her precocious — and very American — ideas of a successful, independent life conflict with her father's traditional African values. Reconciling her dual legacies becomes an unexpected chapter in this unforgettable young woman's education.

Mahalo for Your Support



The PBS Hawaii Lunch Tote

For a gift of \$65 or more, you'll receive our sporty new PBS Hawaii lunch tote. Perfect for work, school, or the outdoors, the handy lunch tote is fully insulated and features two compartments, one on top and one on the bottom. With a side pocket for holding a drink, it also has a large, front zippered pocket, soft grip handle for extra comfort, ID holder, and a reusable plastic food container. Measuring 10.5" (H) x 7.25" (W) x 6" (D), the stylish lunch tote will help you eat healthier and save money, while showing your support for the high-quality programs on PBS Hawaii.

Please mail donation to:

PBS Hawaii P.O. Box 11599 Honolulu HI 96828

Name: _____

Address: _____

City: _____ State: _____ Zip: _____

Phone: _____

Email: _____

Visa Mastercard American Express Check

Card no. : _____ Exp: _____

Signature: _____

- \$1000+ President's Circle
- \$ 500 Broadcaster's Circle
- \$ 250 Director's Club
- \$ 120 Friend
- \$ 85 Family
- \$ 65 **PBS Hawaii Lunch Tote**
- \$ 35 Individual*
- Other amount: \$ _____

* For a gift of \$35 or more, you can choose to receive our monthly PBS Hawaii Magazine by mail or email.

This is an:
 Additional Gift
 Renewal
 New Membership

- No gift needed. I would like all of my donation to go towards quality programming for the community.
- Please check here if you do not want to receive the PBS Hawaii Aloha Diners Club Card
- Please check here if you do not want to receive the PBS Hawaii Magazine.
- Please check here if you would like to receive the PBS Hawaii e-magazine and include your email address.

For questions, please call (808) 973-1187.

Mahalo for your
support during
our recent
pledge drive.



PBS Hawaii

and you!

www.pbshawaii.org