



PBS Hawaii



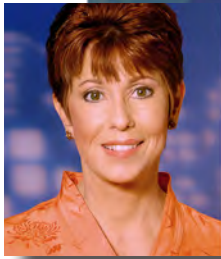
MARCH 2010

e magazine



*Michael  
Bubl   
& Chris  
Botti*

**MARCH  
MUSICAL  
DOUBLEHEADER**



# Being Part of an Extended Team

LESLIE WILCOX, PRESIDENT & CEO

From my first days in television more than 30 years ago, I was attracted to the idea of being part of an extended team. In TV news, everyone must do a good job in order to have successful results. There's no such thing as a small job – from the reporter gathering sound and complete information, to the camera person capturing crisp, telling pictures in the field, to the video editor assembling images, to the studio audio specialist fine-tuning the sound, to the broadcast engineer delivering the signal, and so on.

**There are  
no small  
roles in  
this work  
we do  
together.**

It's so easy to make a mistake along the line in executing a program – and so sweet to nail it! The objective, of course, is informing residents about what they need to know. Or it should be.

Now that media are converging, there are more media platforms to distribute content, and there are more opportunities for first-rate

teamwork. Indeed, media people are better than ever at using technology to deliver information.

But the quality of information has suffered. As you know, it's not unusual for content in the wide world of media to be incomplete, biased or even silly.

That's why I'm thrilled to work today in public media.

Teamwork in public media starts with solid content. Our mission has nothing to do with ratings or profits. It is to strengthen our democracy, build stronger communities and improve lives. We exist to nourish minds and spirits.

PBS' first-rate programs stand alone in their singular focus on serving the public, not the bottom line.

Our fun, curriculum-based, over-the-air children's programming is universally accessible through free, over-the-air broadcasting. Every keiki, regardless of circumstances, can learn reading, science, technology, engineering and math.

*continued >>*

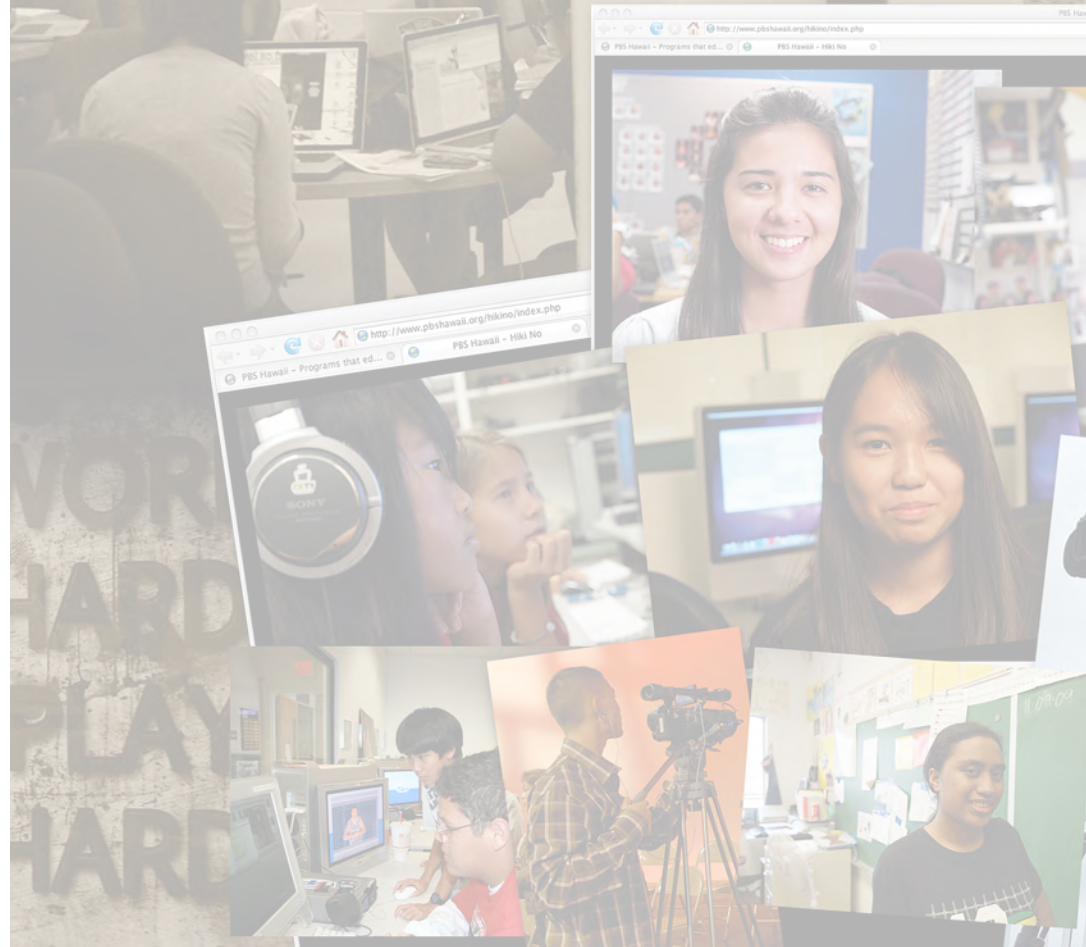
PBS Hawaii is working with middle and high-school students and teachers across the state in developing 21st-century skills in a groundbreaking educational multi-media initiative, Hiki Nō.

Hawaii residents have been very good to this locally-owned, nonprofit public television station and multi-media organization.

You, as a supporter, are an essential teammate upon whom PBS Hawaii depends. There are no small roles in this work we do together.

Thank you so very much.

*Leslie*



## PBS Hawaii Board of Directors

### Chair

Robert Alm

### Vice Chair

Ronald Hansen

### Secretary

Tim Johns

### Treasurer

Jason Fujimoto

Andrew Aoki

Carolyn Berry

Jimmy Borges

Keiki-Pua Dancil, Ph.D.

Guy Fujimura

Ken Hiraki

Alan Hoffman

Hokulani Holt

Joan Lee Husted

Kawika Kahiapo

Ian Kitajima

Thomas Koide

Bill Mills

Cameron Nekota

Marissa Sandblom

David Watumull



Follow PBS Hawaii on  
Facebook® & Twitter®





# Hiki Nō UPDATE

Each month in your PBS Hawaii Magazine you'll find a profile on one of the schools participating in Hiki Nō – the nation's first statewide student news network.



## MOANALUA HIGH SCHOOL

### Media Courses

Film Program: TV Production I & II, Film as Art, Directed Studies Journalism Program: Broadcast Journalism I, II, Directed Studies, and Arts & Communication Capstone

### Teacher/Advisors

Film Program: Mark Ikenaga & Kelly Calistro  
Broadcast Journalism Program: Lynne Sueoka  
Integrated Core Program: Theresa Nishite, Melissa Frankel

### Course Description

In essence, we teach students to tell stories. And, in the telling, we hope they gain first-hand experience in television news gathering and production, issues of fairness and objectivity, and problem solving and ethical decision making.

### Course Enrollment

Film Program: 40 students (grades 10-12)  
Broadcast Journalism Program: 22 students (grades 10-12)  
Integrated Media Program: 66 students (grades 9 & 10)  
Integrated Sociology/Psychology Class: 22 students (grade 12)





## Activities & Achievements

Students in Broadcast Journalism produce the monthly video magazine, “Now Loading,” which airs on Olelo Community Television. Broadcast and film students also represent the school in a variety of community forums; local, state and national contests; and national conventions. Broadcast students have won STN national awards for their feature packages; several of their monthly shows; one of

their Sports Challenge entries; and convention onsite competitions in music video, video essay, TV graphics, and collaborative commercial.

Our Filmic students have won awards in Olelo’s Youth XChange competition, last year walking away with honors in the “Experts” and “short film” categories. This year, three of our short films are finalists in the Student Television Network’s Film Festival.

## Thoughts About Hiki Nō

“Being able to interact and work together with other students from Hawaii is a great way to showcase our work as a community and Hiki Nō gives us the opportunity to do so.”

*Andrew Giaman Tran, grade 11*

“It makes me feel like my opinions matter and it also gives us the opportunity to share our work with other schools while at the same time being exposed to the hard work of students around the island.”

*Niki Badua, grade 10*



*Hiki Nō is made possible by The Clarence T.C. Ching Foundation, the Corporation for Public Broadcasting and Commercial Data Systems.*



# PROGRAMMING HIGHLIGHTS MARCH PLEDGE

PLEDGE YOUR  
SUPPORT ONLINE:



## Great Performances Special:

### Michael Bublé Meets Madison Square Garden

Sunday, March 14 | 8pm, Saturday, March 20 | 9pm

Making his GREAT PERFORMANCES's debut in December 2005 with his first solo-TV special *Caught in the Act*, the multi-Grammy® winning phenomenon Michael Bublé returns to public television with *Michael Bublé Meets Madison Square Garden*, capturing the star

in trademark, high-octane performance. Recorded at New York City's famed arena, concert highlights include a show-stopping collection of Bublé's hits as well as selections from his newest album, *Crazy Love*. Supplementing the concert sequences are behind the scenes documentary segments, offering an intimate portrait of the Canadian singing sensation leading up to his landmark MSG concert.

Extending over two years with 80 sold-out U.S. appearances, Bublé's 2009 concert tour was attended by a total of one million fans worldwide. Released on DVD and CD, the Madison Square Garden concert won a 2009 Grammy® as "Best Traditional Pop Album." Last October, Bublé's current album *Crazy Love* (produced by David Foster and Bob Rock) jumped to number one on the Billboard charts upon its release. Bublé's previous albums have sold over 15 million copies. His 2007 CD, the Grammy®-winning *Call Me Irresponsible*, was a number one album in the U.S. and around the globe. His 2005 *It's Time* album sold six million copies worldwide and holds the record as the longest running title to remain on the Billboard Traditional Jazz charts for two full years, remaining at the number one position for over 80 weeks.





### **Chris Botti in Boston, Part II**

Sunday, March 14 | 7pm,  
Saturday, March 20 | 8pm

CHRIS BOTTI IN BOSTON, PART II features the acclaimed trumpeter performing with a once-in-a-lifetime lineup of some of today's most popular music artists, including Sting, Steven Tyler, Josh Groban and Yo-Yo Ma. These incredible artists join Botti and Keith Lockhart and the Boston Pops to give masterful performances of material different from their usual repertoire. Filmed in high-definition, the new special features performances that weren't seen in last year's show. From the opening moments of the program, the trumpeter and his special guests keep

## **PLEDGE YOUR SUPPORT ONLINE:**



the audience riveted. Highlights include Sting's performance of "If I Ever Lose My Faith in You," Josh Groban's soaring "Broken Vow" and Botti's soulful take on the Leonard Cohen classic "Hallelujah."

International, introduced rock 'n' soul youth culture to America in the first concert movie of the rock era. One of the rarest and most sought-after performance films from its time, the 1964 concert event featured future

Rock and Roll Hall of Famers the Rolling Stones, James Brown, Chuck Berry, the Beach Boys, Marvin Gaye, Smokey Robinson and the Miracles, the Supremes and many other American and British Invasion hit-makers in their prime.



### **The T.A.M.I. Show – Rock 'n' Roll's First Concert Film**

Saturday, March 6 | 8pm,  
Tuesday, March 16 | 8pm

Filmed just eight months after the Beatles appeared on "The Ed Sullivan Show," THE T.A.M.I. SHOW, short for Teen Age Music

### **National Geographic Magazine's Top 10 Photos of the Year** Sunday, March 7 | 7pm

National Geographic Magazine is known for its eye-opening and evocative images. With flair, action and behind-the-scenes footage, this special counts down the "best of the best" from the magazine that has won dozens of national magazine awards for photography. Editor in chief Chris Johns takes a list of hundreds of exceptional photos and whittles it down to



**"Shangri-La,"**  
**Fritz Hoffman**  
*National Geographic*  
*Magazine's Top 10*  
*Photos of the Year*

**PLEDGE YOUR  
 SUPPORT ONLINE:**



just 10. The program tells the stories behind those photographs and includes interviews with the dedicated, adventurous photographers who get the one-in-a-million shot that makes it into the magazine.

### **Roy Orbison: In Dreams**

Sunday, March 7 | 9pm

This program presents the inspiring life, times and music of first-generation Rock and Roll Hall of Fame inductee Roy Orbison. The documentary film outlines the story of one of pop's most enigmatic pioneers.

### **Rounder Records 40th Anniversary Concert**

Tuesday, March 9 | 8pm,

Saturday, March 13 | 10pm

Filmed in October 2009 at Nashville's Grand Ole Opry, this concert is a celebration of Rounder Records' 40 years in the music industry and features Grammy® winning Rounder artists Alison Krauss & Union Station featuring Jerry Douglas, Mary Chapin Carpenter, Bela Fleck and Irma Thomas along with musical host Minnie Driver



and special guests Nathan & the Zydeco Cha Chas and jazz/R&B pianist Henry Butler. The special also includes select performances from Steve Martin's show at the Ryman Auditorium in Nashville, from Alison Krauss and Robert Plant's 2008 CMT "Crossroads" special and from Madeleine Peyroux's 2009 concert in Los Angeles.





**The Priests in Concert**  
**at Liverpool Metropolitan Cathedral**  
 Monday, March 8 | 8pm

The Priests, three clergymen who became a worldwide singing phenomenon, perform a special concert at the historic Metropolitan Cathedral of Christ the King in Liverpool, England, before an audience of more than 2,000 people. Their inspirational classics include “Amazing Grace,” “Danny Boy,” “Bring Him Home,” “The Rose” and “You’ll Never Walk Alone.”

**Celtic Thunder: It’s Entertainment**  
 Wednesday, March 17 | 9:30pm,  
 Saturday, March 21 | 6:30pm

Celtic Thunder, a group of five Celtic male vocalists, undertakes a musical review that spans six decades and will delight and

**PLEDGE YOUR  
 SUPPORT ONLINE:**



enthrall audiences, whether through the nostalgia of classics such as “Standing on the Corner” or the band’s unique take on contemporary numbers such as Michael Bublé’s “Home” or U2’s “Still Haven’t Found What I’m Looking For.”

**Pat Boone: Love Letters in the Sands of Time**  
 Saturday, March 20 | 6:30pm,  
 Monday, March 22 | 8:30pm

During the 1950s, one performer challenged Elvis Presley in chart-topping hits — Pat Boone. Instantly recognizable for his silky, smooth singing voice, charming good looks and iconic white bucks, Boone had 38 top 40 hits and, from 1957 to 1961, hosted “The Pat Boone-Chevy Showroom,” a weekly network television musical variety show. Boone stars in his first PBS special, featuring memorable performances from that hit series.

**Change Your Brain, Change Your Body**  
 Wednesday, March 10 | 8pm

In CHANGE YOUR BRAIN, CHANGE YOUR BODY, award winning psychiatrist and bestselling author Dr. Daniel Amen gives you 10 very simple steps that will help you: live longer; look younger; and decrease your risk for Alzheimer’s disease and depression.

# Community Partners

MAHALO TO BUSINESSES IN OUR COMMUNITY FOR THEIR GENEROUS SUPPORT

## PRODUCTION UNDERWRITERS

**Hawaiian Airlines**

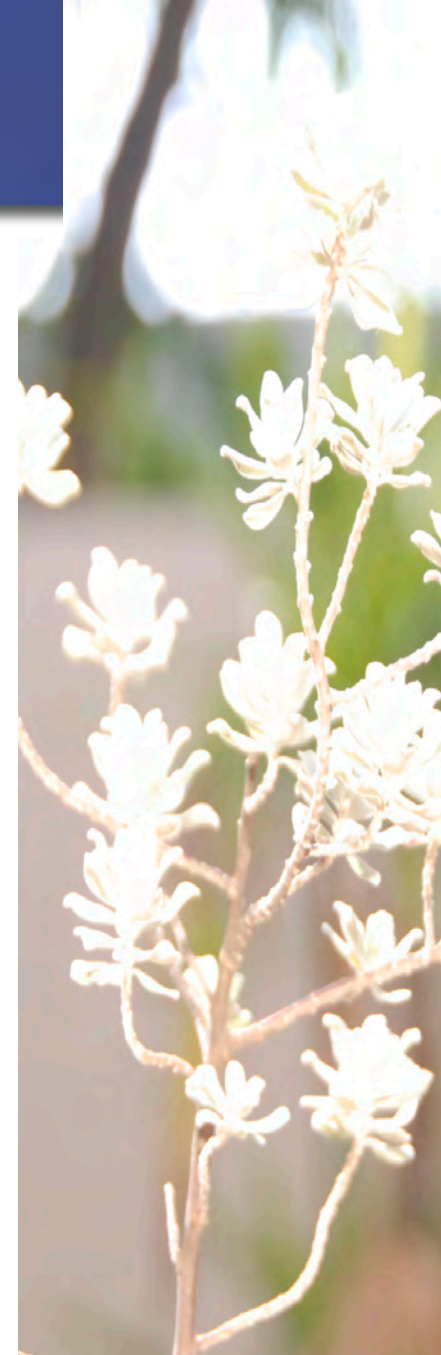
## CORPORATE & FOUNDATION UNDERWRITERS

ABC Stores & The Kosasa Foundation  
Arizona Memorial Museum Association  
Bank of Hawaii  
The Cades Foundation  
Cades Schutte LLP  
Clarence T.C. Ching Foundation  
Commercial Data Systems, Inc.  
Corporation for Public Broadcasting  
Cronin, Fried, Sekiya, Kekina & Fairbanks  
C.S. Wo & Sons  
First Hawaiian Bank  
First Insurance Company of Hawaii, Ltd.  
FLEXA Hawaii, Inc.  
Friends of Hawaii Volcanoes National Park  
John R. Halligan Charitable Fund  
Hawaii Community Foundation  
Hawaii Government Employees Association  
Hawaii Medical Service Association  
Hawaii Natural History Association  
Hawaii News Now  
Hawai'i Pacific University  
Hawaii State Department of Education,  
Teleschool Branch, Office of Curriculum, Instruction  
& Student Support

Hawaii State Teachers Association  
Hawaiian Airlines  
Hawaiian Telcom, Inc.  
The Honolulu Advertiser  
Keiki Care Center of Hawaii  
Kosasa Foundation  
Dr. Lawrence K.W. Tseu  
Mass Mutual  
Dr. John Mirikitani  
John & Clifford Mirikitani Foundation  
Pacific LightNet  
Pigtails & Crewcuts  
Ruby Tuesday Hawaii  
Seven-Eleven Hawaii, Inc.  
Stepping Stones Academy  
University of Hawaii Professional Assembly  
U.S. Pan Asian American Chamber of Commerce  
WETA

## ALII CIRCLE

Marian's Island Wide Catering  
NetEnterprise



# An Easy Way to Support Educational Programming on PBS Hawaii

## The Taniguchis Put Cherished Vehicle to Good Use

Roy and Emogene Taniguchi have been proud supporters of PBS Hawaii since 1990. That's why, when it came time to donate their cherished 1991 Chevy Blazer, they chose PBS Hawaii as the lucky recipient. Mr. Taniguchi described the process of donating his vehicle as "easier than falling down."

Proceeds from the car will go toward helping thousands of families statewide through educational programming and online services.

When commenting on his appreciation for public television Mr. Taniguchi said, "We like PBS Hawaii because of the varied programming. I learn from *NOVA* and I get to meet people

through *Long Story Short with Leslie Wilcox*." They're also excited about Hiki Nō. and feel that community support is so important, especially when it comes to Hawaii's students.

We're so grateful for supporters like the Taniguchis who share in the vision of public television to benefit and enrich the community.

If you'd like more information about donating your tax-deductible vehicle to PBS Hawaii, please contact our Viewer Services Specialist at (808) 973-1187, or visit us online at [pbshawaii.org](http://pbshawaii.org).





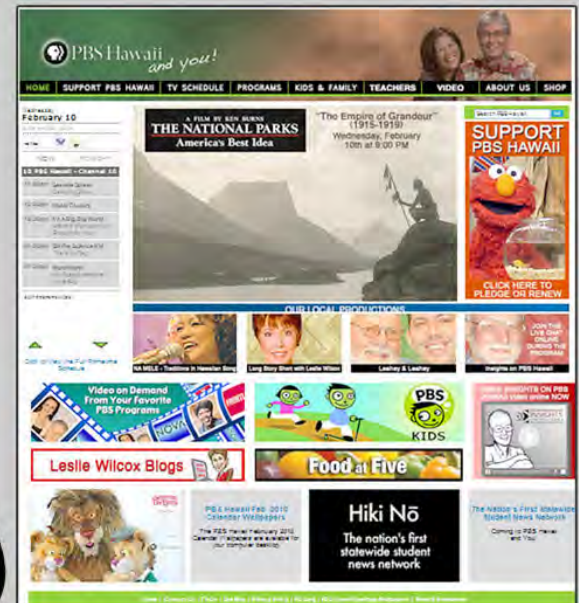
# Point. Contribute.

Supporting PBS Hawaii is now easier!  
Visit our website at [pbshawaii.org](http://pbshawaii.org) and click on

Donate any dollar amount you'd like, check out our benefits,  
browse our thank you gifts and discover all the ways you  
can support high-quality programming.

Our safe and secure site ensures that your personal information  
will be kept confidential.

*Just Point, Click and Contribute!*



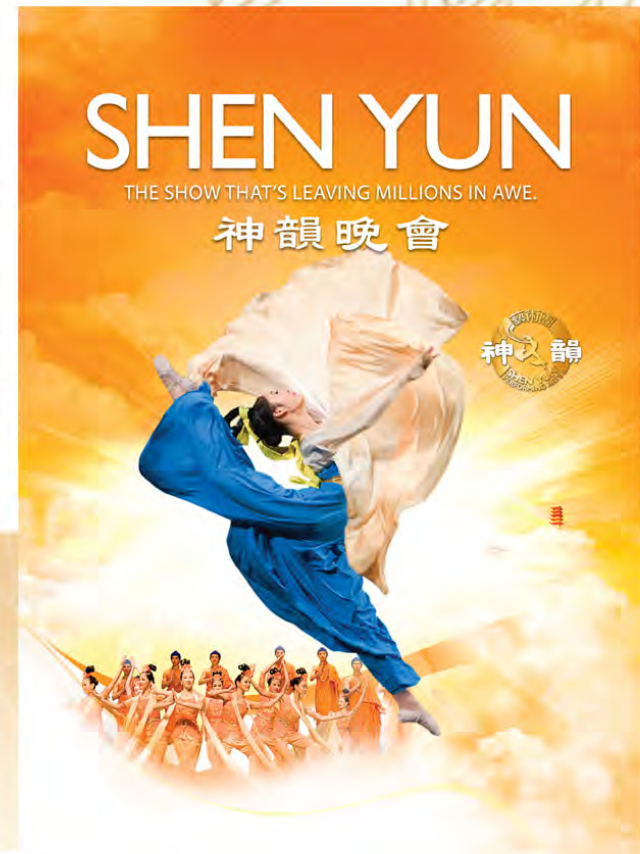
**PLEDGE YOUR  
SUPPORT ONLINE:**



# 5,000 Years of Civilization in One Magical Evening

Shen Yun (Divine) Performing Arts returns to Honolulu with a new and exhilarating performance featuring Classical Chinese dance and a glorious live orchestra. Traditional art forms dating back three millennia, grand tales and heroic figures from 5,000 years of Chinese culture come to life through enchanting vocals, heart-pounding choreography, and moving instrumental selections.

For a \$250 donation to PBS Hawaii, you can receive a Premium VIP package that includes two tickets with backstage passes to attend the post-show reception on Friday, June 4, 2010 at 7:30 p.m.



**Neal Blaisdell Concert Hall**  
Friday, June 4, 2010 7:30 p.m.  
Saturday, June 5, 2010 2:00 p.m.  
7:30 p.m.  
Sunday, June 6, 2010 2:00 p.m.  
[www.shenyunperformingarts.org](http://www.shenyunperformingarts.org)

**Call 973-1187 to reserve your tickets and VIP passes.**



Pledge \$100 or more and you can receive a \$10 gift certificate from Ruby Tuesday as a bonus thank you gift during our

# MARCH MUSICAL DOUBLE HEADER



Chris Botti in Boston, Part II

followed by



Great Performances Special:  
Michael Buble Meets  
Madison Square Garden

Sunday, March 14 at 7:00 p.m.  
Saturday, March 20 at 8:00 p.m.

Tune in for this special broadcast and when you make your pledge of \$100 or more, you can choose to receive a \$10 gift certificate from Ruby Tuesday, in addition to the fabulous program-related gifts.

\$10 Ruby Tuesday  
Gift Certificate  
with a pledge of \$100 or more

Call in your support to  
(808) 973-2222  
or log on to [pbshawaii.org](http://pbshawaii.org)



# PBS Hawaii PROGRAM LISTINGS

March 2010

MONDAY, MARCH 22 | 7:30PM  
SUNDAY, MARCH 28 | 10PM



magic **NA MELE** moments



**PBS Hawaii celebrates  
standout moments from the  
*Na Mele: Traditions In Hawaiian Song*  
series – moments that capture  
the beauty and essence of what  
Hawaiian music is all about.**

Featured are knock-out performances by Ledward Kaapana and Mike Kaawa from the *Waimea 'Ukulele & Slack Key Guitar* special; hula by Kanoë Miller and Debbie Nakanelua at the timeless setting of Halekulani's House Without A Key; singer and kumu hula Tony Conjugacion accompanying some of the grand ladies of hula; and Robert Cazimero playing piano and singing with the likes of Emma Veary, Nina Keali'iwahamana, and Marlene Sai. These 'chicken skin' moments are sure to warm the hearts of Hawaiian music aficionados and newcomers alike.

PBS Hawaii is on the air seven days a week from 5 am to midnight. Viewers with cable service also have access to overnight programming. Viewers with cable service and high-definition (HD) TVs may watch PBS Hawaii in high-definition on Oceanic Time Warner Channel 1010.

CODING:

**(e)** encore **(HD)** High-Definition

**(TBD)** Programming to be determined

**(u)** Updated Programming

When possible, repeat broadcast dates during the month will be indicated in parentheses. All programs have closed-captioning. Late-breaking events may result in schedule changes. For more information and the latest schedules, please visit

## 1 MONDAY

**7:30 Na Mele: Traditions in Hawaiian**

*Song Melveen Leed* **(e)**

**8:00 Antiques Roadshow** *Madison, WI, Part 3*

**9:00 American Experience** *Dolley Madison*

Style icon, extravagant hostess, humanitarian, doting mother, trusted political advisor and diplomat. These are the roles we now expect in a First Lady, roles created by President James Madison's wife, Dolley. Born in relative obscurity before the American Revolution,

Dolley's beauty attracted attention, but it was her political acumen that set her apart in a time when women held no overt political power. The film stars Tony Award-winner Eve Best (*The Homecoming*; "Nurse Jackie") as Dolley Madison and Tony Award-winner Jefferson Mays (*I Am My Own Wife*) as James Madison.

**10:30 Morristown: Where America Survived**

**11:00 Faces of America** *Our American Stories*  
**Cable Only**

**Midnight Charlie Rose**

**1:00 Antiques Roadshow** *Madison, WI*

**2:00 Masterpiece Classic** *The 39 Steps*

**3:30 Ribbon of Sand**

## 2 TUESDAY

**7:30 Long Story Short with Leslie Wilcox**

*Layla Dedrick* Leslie Wilcox talks story with Layla Dedrick, Pacific Business News' 2009 Young Business Leader of the Year. Layla is C.E.O. Bella Pietra, a natural stone company, and she runs her business on values that are part of her Hawaiian heritage: Kuleana (responsibility), Malama (caring for), and Kupono (doing the right thing in the right place). She talks with Leslie about her journey from her childhood in Waianae, to attending Kamehameha Schools, to teaching special needs children, to running a highly successful business with her husband. **(HD)**

**8:00 NOVA** *Pluto Files* Since its discovery in 1930, Pluto has held a warm place in the public imagination. So, when the American Museum of Natural History's Hayden Planetarium stopped calling Pluto a planet, director Neil deGrasse Tyson found himself at the center of a firestorm — a firestorm led by angry Pluto-loving elementary school students. But what is it about this cold, distant rock that captures so many hearts? NOVA joins Tyson on a quest to find out. **(HD)**

**9:00 Frontline** *The Suicide Tourist* Do we have the right to end our lives if life itself becomes unbearable, or when we enter the late-stages of painful, terminal illness? FRONTLINE and Academy Award-winning filmmaker John Zaritsky offer a revealing look at people facing the most difficult decision of their lives.

**10:00 Independent Lens** *The Eyes of Me* This is an up-close look at four teens who have lost their sight. The film follows their struggles to fit in, prepare for college and live independently. It's an extraordinary peek into the world of blind teenagers where crossing an intersection, cooking a meal or navigating unfamiliar areas can be a challenge that sighted viewers never consider.

**11:00 PBS Hawaii Picks**  
**Cable Only**  
**Midnight Charlie Rose**





1:00 American Experience *Dolley Madison*  
2:30 Morristown: Where America Survived  
3:00 Antiques Roadshow *Madison, WI*

### 3 WEDNESDAY

7:30 Leahey & Leahey  
8:00 Faces of America *Know Thyself*  
9:00 The National Parks: America's Best  
Idea *The Morning of Creation*  
(1946-1980) (e)  
11:00 Long Story Short with Leslie Wilcox  
Layla Dedrick (e)  
11:30 Leahey & Leahey (e)  
Cable Only  
Midnight Charlie Rose  
1:00 Independent Lens *The Eyes of Me*  
2:00 Frontline *The Suicide Tourist*  
3:00 NOVA *Pluto Files*

### 4 THURSDAY

7:30 Insights on PBS Hawaii  
8:30 PBS Hawaii Presents *Washington Place:  
Hawaii's First Home* (e)  
9:00 PBS Hawaii Presents *Heart Strings: The  
Story of the Kamaka Ukulele* (e)  
9:30 Rick Steves' Europe *Athens and Side Trips*  
10:00 Globe Trekker *East Africa: Tanzania &  
Zanzibar*  
11:00 PBS Hawaii Presents *Washington Place:  
Hawaii's First Home* (e)  
11:30 PBS Hawaii Presents *Heart Strings: The  
Story of the Kamaka Ukulele* (e)  
Cable Only  
Midnight Charlie Rose  
1:00 The National Parks: America's Best  
Idea *The Morning of Creation*  
(1946-1980)  
3:00 Faces of America *Know Thyself*

### 5 FRIDAY

7:30 Washington Week  
8:00 Now on PBS  
8:30 Bill Moyers Journal  
9:30 The McLaughlin Group  
10:00 Insights on PBS Hawaii (e)  
11:00 The Future of News *Non-Stop News:  
The 24/7 News Cycle*  
11:30 Washington Week (e)  
Cable Only  
Midnight Charlie Rose  
1:00 At Close Range with National  
Geographic  
2:00 Antiques Roadshow *Madison, WI*  
3:00 The This Old House Hour

### 6 SATURDAY

Noon A Moment of Luxury *Restoration After  
Hurricane Ike*





## At Close Range with National Geographic

WEDNESDAY, MARCH 10 | 10PM

& SUNDAY, MARCH 14 | 11P

National Geographic magazine photographer Joel Sartore shoots in some of the most exotic locales on earth, but often in wretched conditions for weeks on end. This documentary shows Sartore in consultation with National Geographic photo editors in Washington, DC, as thousands of individual frames are whittled down to the 10 or 20 that will accompany a typical magazine story. Sartore thinks the majority of Americans want to know that the wild and natural world still exists. National Geographic brings that idea home.

12:30 Scheewe Art Workshop

1:00 Beads, Baubles and Jewels

1:30 The Best of the Joy of Painting

2:00 Passport & Palette *Switzerland*

2:30 The Woodwright's Shop *Parallelogram Plant Stand*

3:00 The American Woodshop *Turning Hall Trees*

3:30 This Old House

4:00 Motorweek

4:30 Car Care for Everyone with Pat Goss

6:00 Change Your Brain, Change Your Body  
See page 9.

8:00 The T.A.M.I. Show – Rock'n'Roll's First  
Concert Film See page 7.

10:00 Chet Atkins: Certified Guitar Player

11:30 Loreena McKennitt: A Movable  
Musical Feast

Midnight Globe Trekker *East Africa: Tanzania & Zanzibar*

1:00 Time Team America *Fort Raleigh, North Carolina*

2:00 Washington Week

2:30 Now on PBS

3:00 Bill Moyers Journal

## 7 SUNDAY

Noon Antiques Roadshow *Madison, WI, Part 3 (e)*

1:00 The This Old House Hour

2:00 NOVA *Pluto Files (e) (HD)*

3:00 Insights on PBS Hawaii (e)

4:00 Long Story Short with Leslie Wilcox  
*Layla Dedrick (HD) (e)*

4:30 Leahey & Leahey (e)

5:00 Life (Part 2) *Caregiving (e)*

5:30 To the Contrary with Bonnie Erbe

6:00 Religion and Ethics NewsWeekly

6:30 Second Opinion: Taking Charge of  
Your Healthcare *Female Sexual Dysfunction (e)*

7:00 National Geographic Magazine's Top  
10 Photos of the Year See pages 7-8.

8:00 More Funny Ladies of British Comedy

9:00 Roy Orbison: In Dreams See page 8.

10:00 Roy Orbison & Friends: Black &  
White Night (e)

10:30 Independent Lens *No Subtitles Necessary: Laszlo and Vilmos*

Cable Only

Midnight Alzheimer's Disease: Facing the  
Facts

1:00 The National Parks: America's Best  
Idea *The Morning of Creation (1946-1980)*

3:00 Faces of America *Know Thyself*



Michael Bolton

## 8 MONDAY

**7:30 Na Mele: Traditions in Hawaiian Song** *George Kahumoku* (e)

**8:00 The Priests in Concert at Liverpool Metropolitan Cathedral** See page 9.

**9:30 Michael Bolton Live at the Royal Albert Hall** He's sold more than 53 million records and sung and composed with everyone from Luciano Pavarotti and B.B. King to Lady Gaga and Kanye West. Now Michael Bolton takes viewers on a spectacular grand tour of his music

at London's Royal Albert Hall. He performs his Lady Gaga collaboration "Murder My Heart," Bolton classics "How Can We Be Lovers" and "Soul Provider," timeless classics from the big band days and the emotionally charged "Georgia on my Mind," among other Bolton hits.

**11:00 Faces of America Becoming American** (e)

Cable Only

**Midnight Charlie Rose**

**1:00 American Experience** *Dolley Madison*

**2:30 Morristown: Where America Survived**

**3:00 Nature** *The Loneliest Animals*

## 9 TUESDAY

**7:30 Long Story Short with Leslie Wilcox**  
*Puakea Nogelmeier* (e)(HD)

**8:00 Rounder Records 40th Anniversary Special** See pages 8.

**9:30 Science Trek**

**11:00 PBS Hawaii Picks**

Cable Only

**Midnight Charlie Rose**

**1:00 Time Team America** *Fort Raleigh, North Carolina*

**2:00 Time Team America** *Topper, South Carolina*

**3:00 Antiques Roadshow** *Baltimore, MD*

## 10 WEDNESDAY

**7:30 Leahey & Leahey**

**8:00 Change Your Brain, Change Your Body**  
See page 9. (e)

**10:00 At Close Range with National Geographic** See page 18. (e)

**11:00 Long Story Short with Leslie Wilcox**  
*Puakea Nogelmeier* (HD)(e)

**11:30 Leahey & Leahey** (e)

Cable Only

**Midnight Charlie Rose**

**1:00 Independent Lens** *Between the Folds*

**2:00 Objects & Memory**

**3:00 NOVA** *Master of the Killer Ants*

## 11 THURSDAY

**7:30 The New Affluence: Money Help is on the Way**

**9:00 Rick Steves' Mediterranean Mosaic**

**11:00 Great Performances** *Sting: Songs from the Labyrinth* Born in 1563 into an age of religious and political strife, English composer and court musician John Dowland has for centuries captivated performers and listeners alike with his serene and introspective music. It is perhaps inevitable that Sting - one of today's most acclaimed troubadours - would be drawn to revisit Dowland's work from a contemporary perspective, some 400 years after the composer's death. (e)

Cable Only

Midnight Charlie Rose

1:00 Augustus Saint-Gaudens: Master of American Sculpture

2:00 Great Performances *Sting: Songs from the Labyrinth*

3:00 The Natural *History of the Chicken*

## 12 FRIDAY

7:30 Washington Week

8:00 Now on PBS

8:30 Bill Moyers Journal

9:30 The McLaughlin Group

10:00 The Miller Center National Debates  
*Do We Need More College Graduates?*

11:00 The Future of News *What's the Future of TV News?*

11:30 Washington Week (e)

Cable Only

Midnight Charlie Rose

1:00 The Natural *History of the Chicken*

2:00 Antiques Roadshow *Baltimore, MD*

3:00 The This Old House Hour

## 13 SATURDAY

Noon A Moment of Luxury  
*Bonjour Quebec City*

12:30 Scheewe Art Workshop

1:00 Beads, Baubles and Jewels

1:30 The Best of the Joy of Painting

2:00 Passport & Palette *City Painting*

2:30 The Woodwright's Shop *German Woodcraft in America*

3:00 The American Woodshop *Ionic Column Table*

3:30 This Old House

4:00 Motorweek

4:30 America's Test Kitchen from Cook's Illustrated *Best Weekend Breakfast*

5:00 Go Greener

6:30 Brain Fitness *Frontiers (e)*

8:00 Celtic Women: Songs from the Heart

10:00 Rounder Records 40th Anniversary Special See page 8.

11:30 Roughing It: Mongolia (e)

Midnight Great Performances *Sting: Songs from the Labyrinth*

1:00 Time Team America *Topper, South Carolina*

2:00 Washington Week

2:30 Now on PBS

3:00 Bill Moyers Journal

## 14 SUNDAY

Noon Antiques Roadshow *Baltimore, MD, Part 1 (e)*

1:00 The This Old House Hour

2:00 Dr. Christiane Northrup: Menopause & Beyond

4:00 Long Story Short with Leslie Wilcox  
*Puakea Nogelmeier (HD)(e)*

4:30 Leahey & Leahey (e)

5:00 Life (Part 2) Dancing with Doctors (e)

5:30 To the Contrary with Bonnie Erbe

6:00 Religion and Ethics NewsWeekly

6:30 Second Opinion: Taking Charge of Your Healthcare *Forever Young (e)*

7:00 Chris Botti Live in Boston, Part II See page 7.

8:00 Great Performances Special: Michael Buble Meets Madison Square Garden See page 6.

9:30 Rock and Roll Hall of Fame Live

11:00 At Close Range with National Geographic (e)

Cable Only

Midnight For the Rights of All: Ending Jim Crow in Alaska

1:00 The Natural *History of the Chicken*

2:00 Augustus Saint-Gaudens: Master of American Sculpture

## 15 MONDAY

7:30 Na Mele: Traditions in Hawaiian Song *Dennis & David Kamakahi; Martin Pahinui; George Kuo (e)*

8:00 The Best of Daniel O'Donnell on Film

9:30 Benise: The Spanish Guitar

11:00 Faces of America *Making America (e)*

Cable Only

Midnight Charlie Rose

1:00 Time Team America *New Philadelphia, Illinois*

2:00 Nature *What Females Want*



## 16 TUESDAY

7:30 Long Story Short with Leslie Wilcox

*Puakea Nogelmeier on the Hawaiian Language (HD)*

8:00 The T.A.M.I. Show – Rock'n'Roll's First Concert Film See page 7. (e)

10:00 The Misunderstood Epidemic: Depression

11:00 PBS Hawaii Picks

Cable Only

Midnight Charlie Rose

1:00 Time Team America *Range Creek, Utah*

2:00 Antiques Roadshow *Baltimore, MD*



Celtic Thunder: It's Entertainment

## 17 WEDNESDAY

7:30 Leahey & Leahey

8:00 When Irish Eyes Are Smiling: An Irish Parade of Stars This nostalgic journey back to the 1950s and 1960s presents long-unseen footage of beloved performers singing some of the greatest songs from and inspired by Ireland. Hosted by Patty Duke and written by Malachy McCourt, the program features performances by the late Frank Patterson, the ultimate Irish tenor and a star around the world.

9:30 Celtic Thunder: It's Entertainment See page 9.

11:00 Long Story Short with Leslie Wilcox

*Puakea Nogelmeier on the Hawaiian Language (HD)(e)*

11:30 Leahey & Leahey (e)

Cable Only

Midnight Charlie Rose

1:00 Independent Lens *Butte, America*

2:30 NOVA *First Flower*

## 18 THURSDAY

7:30 Insights on PBS Hawaii

8:30 Ed Slott's Stay Rich for Life (e)

10:00 Globe Trekker *Portugal & The Azores (e)*

11:00 Synchronized Swimming: The Pursuit of Excellence (e)

Cable Only

Midnight Charlie Rose

1:00 America's Ballroom Challenge

## 19 FRIDAY

7:30 Washington Week

8:00 Now on PBS

8:30 Bill Moyers Journal

9:30 The McLaughlin Group

10:00 Insights on PBS Hawaii (e)

11:00 The Future of News *Global News (e)*

11:30 Washington Week (e)

Cable Only

Midnight Charlie Rose

1:00 Antiques Roadshow *Baltimore, MD*

3:00 The This Old House Hour

## 20 SATURDAY

Noon A Moment of Luxury *American Classic*

12:30 Scheewe Art Workshop

1:00 Beads, Baubles and Jewels

1:30 The Best of the Joy of Painting

2:00 Gary Spetz's Watercolor Quest *Glacier National Park - West*



**2:30 The Woodwright's Shop** *Woodworking with Tillers International*

**3:00 The American Woodshop** *Country Corner Shelf*

**3:30 This Old House**

**4:00 Motorweek**

**4:30 America's Test Kitchen from Cook's Illustrated** *Classic Beef Braises*

**5:00 Taking Control of Diabetes with Dr. Neal Barnard**

**6:30 Pat Boone: Love Letters in the Sands of Time** See page 9.

**8:00 Chris Botti Live in Boston, Part II** See page 7. (e)

**9:00 Great Performances Special: Michael Buble Meets Madison Square Garden** See page 6. (e)

**10:30 Tuba U: Basso Profundo** (e)

**11:00 Austin City Limits** *Lyle Lovett & Friends: Songwriters Special* (e)

**Midnight Globe Trekker** *Portugal & The Azores*

**1:00 Washington Week**

**1:30 Now on PBS**

**2:00 Bill Moyers Journal**

## 21 SUNDAY

**Noon Antiques Roadshow** *Baltimore, MD, Part 2* (e)

**1:00 The This Old House Hour**

**2:00 NOVA *First Flower*** Flowers hold a special place in the plant world, as they do in the human heart. There are between 220,000 to more than 400,000 different flowering species on earth. They

dominate gardens and landscapes, and provide many food staples. Yet until recently, almost nothing was known about their origin; Charles Darwin called it "an abominable mystery." In the search for answers, NOVA takes viewers on a spectacular journey of discovery to a remote mountain region of China, to explore our fascination with flowers and solve the puzzle of their beginnings. (e)

**3:00 Insights on PBS Hawaii** (e)

**4:00 Long Story Short with Leslie Wilcox** *Puakea Nogelmeier on the Hawaiian Language* (HD) (e)

**4:30 Leahey & Leahey** (e)

**5:00 Life (Part 2)** *Money is Love* (e)

**5:30 To the Contrary with Bonnie Erbe**

**6:00 Religion and Ethics NewsWeekly**

**6:30 Celtic Thunder: It's Entertainment** See page 9. (e)

**8:00 Ed Sullivan's Rock and Roll Classics - The 60s**

**10:00 Austin City Limits** *Bettye LaVette/ Pinetop Perkins* (e)

**11:00 All About Prints** (e)

**Cable Only**

**Midnight Playing for the World: The 1904 Indian Girls' Basketball Team**

**1:00 The Ascent of Money**

## 22 MONDAY

**7:30 Magic Na Mele Moments**

See page 15.

**8:30 Pat Boone: Love Letters in the Sands of Time** See page 6. (e)

**10:00 American Masters** *John James Audubon:*

*Drawn From Nature* In a dramatic, contradictory story, the man who is synonymous with the American wilderness and conservation movement emerges as the man who probably killed more birds than anyone else in history. Energetic, gifted and vain, Audubon was self-taught and self-made, the illegitimate son of a French sea captain and Haitian servant girl. From the Caribbean and the French countryside, he eventually settled in the American south at age 19 and, after failed business efforts and bankruptcy, pursued his true passion — finding, shooting and drawing birds and ultimately realizing his dream of publishing *The Birds of America*, the monumental collection of 435 life-size prints, now each fetching more than \$100,000 at auction. (e)

**11:00 Faces of America** *Know Thyself* (e)

Cable Only

**Midnight Charlie Rose**

**1:00 American Experience** *The Lobotomist*

**2:00 Nature** *What Females Want and What Males Will Do*

## 23 TUESDAY

**7:30 Long Story Short with Leslie Wilcox** *The*

*Maunakea-Forths* (HD)(e)

**8:00 NOVA** *Cracking the Maya Code* (e)

**9:00 Frontline** *Close to Home* (e)

**10:00 Independent Lens** *Lost Souls* (Animas Perdidas)

**11:00 PBS Hawaii Picks**

Cable Only

**Midnight Charlie Rose**

**1:00 American Experience** *John James*

*Audubon: Drawn From Nature*

**2:00 Antiques Roadshow** *Baltimore, MD*

## 24 WEDNESDAY

**7:30 Leahey & Leahey**

**8:00 Great Performances** *Dance In America:*

*NY Export: Opus Jazz*

**9:00 Great Performances at the Met** *Les*

*Contes d'Hoffmann*

Cable Only

**Midnight Charlie Rose**

**1:00 Independent Lens** *Lost Souls*

(Animas Perdidas)

**2:00 NOVA** *Cracking the Maya Code*

## 25 THURSDAY

**7:30 Insights on PBS Hawaii**

**8:30 PBS Hawaii Presents** *Insular Empire:*

*America in the Mariana Islands* See page 28.

**9:30 Roadtrip Nation**

**10:00 Globe Trekker** *The Balkans* (e)

**11:00 PBS Hawaii Presents** *Insular Empire* (e)

Cable Only

**Midnight Charlie Rose**

**1:00 The Powder & The Glory**

**2:30 Crown of the Continent** *Alaska's Wrangell-St. Elias*

## 26 FRIDAY

**7:30 Washington Week**

**8:00 Now on PBS**

**8:30 Bill Moyers Journal**

**9:30 The McLaughlin Group**

**10:00 Insights on PBS Hawaii** (e)

**11:00 The Future of News**

*Political Reporting* (e)

**11:30 Washington Week** (e)

Cable Only

**Midnight Charlie Rose**

**1:00 Frontline** *Close to Home*

**2:00 The This Old House Hour**

## 27 SATURDAY

**Noon A Moment of Luxury** *Celebration*

**12:30 Scheewe Art Workshop**

**1:00 Beads, Baubles and Jewels**

**1:30 The Best of the Joy of Painting**

**2:00 Gary Spetz's Watercolor Quest** *Glacier National Park - East*

**2:30 The Woodwright's Shop** *The Sordid Blacksmith*



**3:00 The American Woodshop** *Shaker Inspired Work Tables*  
**3:30 This Old House**  
**4:00 Motorweek**  
**4:30 America's Test Kitchen from Cook's Illustrated** *Two Ways with Pork*  
**5:00 Avec Eric** *Oil and Wine*  
**5:30 Simply Ming** *Sesame Seeds/Butter*  
**6:00 Lidia's Italy** *Umbria Family Jewels (Umbria)*  
**6:30 Everyday Food** *Great Dishes Under \$10*  
**7:00 Gourmet's Adventures with Ruth**  
*Blackberry Farm, Tennessee*  
**7:30 Burt Wolf: Travels & Traditions** *Great Hotels of the World, Part 2*  
**8:00 Stephen Fry in America** *The Pacific*  
**9:00 Great Museums** *An Acquiring Mind: Philippe de Montebello and the Metropolitan Museum of Art*  
**10:00 Soundstage** *Willie Nelson*  
**11:00 Austin City Limits** *Bettye LaVette/Pinetop Perkins (e)*  
**Midnight Globe Trekker** *The Balkans*  
**1:00 Washington Week**  
**1:30 Now on PBS**  
**2:00 Bill Moyers Journal**

## 28 SUNDAY

**Noon Antiques Roadshow** *Baltimore, MD, Part 3 (e)*  
**1:00 The This Old House Hour**  
**2:00 NOVA** *Cracking the Maya Code (e)*  
**3:00 Insights on PBS Hawaii (e)**

**4:00 Long Story Short with Leslie Wilcox** *The Maunakea-Forths (HD)(e)*  
**4:30 Leahey & Leahey (e)**  
**5:00 Life (Part 2)** *Fighting Ageism (e)*  
**5:30 To the Contrary with Bonnie Erbe**  
**6:00 Religion and Ethics NewsWeekly**  
**6:30 Second Opinion: Taking Charge of Your Healthcare** *Anxiety Disorder (e)*  
**7:00 Nature** *Clever Monkeys (e)(HD)*  
**8:00 Masterpiece Classic** *Sharpe's Challenge*  
 In 1817, soldier-adventurer Richard Sharpe comes out of retirement to quash a rebellion in British India and rescue his old friend Patrick Harper. Sean Bean (*The Lord of the Rings*) returns as the swashbuckling hero of this long-running series, based on the best-selling novels of Bernard Cornwell, with Daragh O'Malley as Harper. The duo's exploits put them at the center of a blood-thirsty insurgency, led by a psychopathic former English officer. Top Chef's Padma Lakshmi guest stars as Madhuvanthi, a beautiful schemer who is out to seduce Sharpe.  
**10:00 Magic Na Mele Moments**  
 See page 15. (e)  
**11:00 Stephen Fry in America** *The Pacific (e)*  
**Cable Only**  
**Midnight Soundstage** *Willie Nelson*  
**1:00 Depression: Out of the Shadows**



**Masterpiece Classic** *Sharpe's Challenge*



## 29 MONDAY

**7:30 Na Mele: Traditions in Hawaiian Song**

*Jerry Santos and Friends (e)*

**8:00 Antiques Roadshow** *Denver, CO, Part 1*

**9:00 American Experience** *Victory in the Pacific* "Take no prisoners. Fight to the bitter end." Those were everyday words to combat troops on both sides at the end of World War II in the Pacific. And they led to an unprecedented orgy of slaughter. This provocative, thorough examination of the final months of the war looks at the escalation of bloodletting from both Japanese and American vantage points. From the U.S. capture of the Mariana Islands through the firebombing of Tokyo and the dropping of the atomic bomb, this program

chronicles the dreadful and unprecedented loss of life, and the decisions made by leaders on both sides that finally ended the war. **(e)**

**11:00 PBS Hawaii Picks**

**Cable Only**

**Midnight Charlie Rose**

**1:00 Synchronized Swimming: The Pursuit of Excellence**

**2:00 Nature** *Clever Monkeys*

## 30 TUESDAY

**7:30 Long Story Short with Leslie Wilcox**

*Leona Rocha Wilson (HD)*

**8:00 NOVA** *Rat Attack (e)*

**9:00 Frontline** *The Quake*

**10:00 Independent Lens** *Whatever It Takes*

**11:00 PBS Hawaii Picks**

**Cable Only**

**Midnight Charlie Rose**

**1:00 Independent Lens** *Whatever It Takes*

**2:00 Antiques Roadshow** *Denver, CO*

## 31 WEDNESDAY

**7:30 Leahey & Leahey**

**8:00 Tavis Smiley Reports** *MLK: A Call to Conscience*

**9:00 American Masters** *I.M. Pei: Building China Modern* Noted architect I.M. Pei, who left his native China in the 1930s, was invited to design a modern museum to house the antiquities of Suzhou, where he grew up. This film follows his seven-and-a-half-year personal and architectural journey from west to east, a literal coming home — a realization of Pei's lifelong dream, but also his biggest challenge and a work that he defines as "my biography." The program includes commentary from local residents, design specialists, Suzhou officials and a stellar array of architects, designers and scholars commenting on Pei's life and work.

**10:00 The Street Stops Here**

**11:30 Leahey & Leahey**

**Cable Only**

**Midnight Charlie Rose**

**1:00 Frontline** *The Quake*

**2:00 NOVA** *Rat Attack*

# DIGITAL CABLE CHANNEL 443

4:30am	Sid the Science Kid
5am	Super Why!
5:30am	Dinosaur Train
6am	Between the Lions
6:30am	Arthur
7am	Fetch! with Ruff Ruffman
7:30am	The Electric Co.
8am	Maya & Miguel
8:30am	Cyberchase
9am	Martha Speaks
9:30am	Dragon Tales
10am	Sesame Street
10:30am	
11am	Barney & Friends
11:30am	Clifford the Big Red Dog
Noon	Curious George
12:30pm	Sid the Science Kid
1pm	Super Why!
1:30pm	Dinosaur Train
2pm	Between the Lions
2:30pm	Arthur
3pm	Fetch! with Ruff Ruffman
3:30pm	The Electric Co.
4pm	Maya & Miguel

4:30pm	Cyberchase
5pm	Martha Speaks
5:30pm	Dragon Tales
6pm	Sesame Street
6:30pm	
7pm	Barney & Friends
7:30pm	Clifford the Big Red Dog
8pm	Curious George
8:30pm	Sid the Science Kid
9pm	Super Why!
9:30pm	Dinosaur Train
10pm	Between the Lions
10:30pm	Arthur
11pm	Fetch! with Ruff Ruffman
11:30pm	The Electric Co.
Midnight	Maya & Miguel
12:30am	Cyberchase
1am	Martha Speaks
1:30am	Dragon Tales
2am	Sesame Street
2:30am	
3am	Barney & Friends
3:30am	Clifford the Big Red Dog
4am	Curious George



	MONDAY - FRIDAY	SATURDAY	SUNDAY
5am	It's A Big Big World	Cyberchase	Make Way For Noddy
5:30	WordWorld	Angelina Ballerina	Bob the Builder
6am	Sesame Street	Mr. Rogers' Neighborhood	Dragon Tales
6:30		WordWorld	Mr. Rogers' Neighborhood
7am	Curious George	Arthur	Sesame Street
7:30	Sid the Science Kid	Between the Lions	
8am	Super Why!	Caillou	Super Why!
8:30	Dinosaur Train	Clifford the Big Red Dog	Clifford's Puppy Days
9am	Barney & Friends	Mama Mirabelle's Home Movies	Barney & Friends
9:30	Clifford the Big Red Dog	Dragon Tales	Sid the Science Kid
10am	Martha Speaks	Thomas & Friends	Arthur
10:30	Dragon Tales/DOE	Dinosaur Train	WordGirl
11am	Sesame Street	It's A Big Big World	Curious George
11:30		The Electric Company	Zula Patrol
noon	Caillou/DOE	Moment of Luxury	Antiques Roadshow
12:30	It's A Big Big World/DOE	Scheewe Art Workshop	
1pm	Sid the Science Kid	Beads, Baubles & Jewels	The This Old House Hour
1:30	WordWorld	The Best of the Joy of Painting	
2pm	Curious George	Passport & Palette/Gary Spetz	NOVA
2:30	Between the Lions	The Woodwright's Shop	
3pm	Arthur	The American Woodshop	Insights on PBS Hawaii
3:30	WordGirl	This Old House	
4pm	Fetch! with Ruff Ruffman	Motorweek	Long Story Short
4:30	The Electric Co.	America's Test Kitchen	Leahey & Leahey
5pm	Food at Five	Avec Eric	Life (Part 2)
5:30	Nightly Business Report	Simply Ming	To The Contrary
6pm	BBC World News	Lidia's Italy	Religion & Ethics NewsWeekly
6:30	PBS NEWSHOUR	Everyday Food	Second Opinion

# DAYTIME SCHEDULE

## MARCH 2010

\* program update

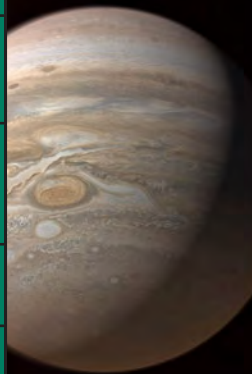
Program schedules are subject to change. For program and schedule updates, visit our website:

**PBS Hawaii Presents**  
**Insular Empire:**  
**America in the**  
**Mariana Islands**

Thursday, March 25 | 8:30PM

The Mariana Islands include the U.S. Territory of Guam and the U.S. Commonwealth of the Northern Mariana Islands (CNMI). For generations, these islands' indigenous Chamorro and Carolinian people have been second-class Americans – fighting and dying under the stars and stripes, with no voting representation in Congress, and no vote for their commander-in-chief. Today the US military is planning a massive buildup of these small, strategic islands, with no input from the people of the Marianas. Yet the Chamorros and Carolinians remain steadfastly patriotic – more loyal, in fact, than many mainland communities.

# WEEKLY EVENING SCHEDULE MARCH 1-6

	31   SUNDAY	1   MONDAY	2   TUESDAY	3   WEDNESDAY	4   THURSDAY	5   FRIDAY	6   SATURDAY
7:30	<div>NOVA Pluto Files</div> 	Na Mele: Traditions in Hawaiian Song <i>Melveen Leed</i>	Long Story Short with Leslie Wilcox <i>Layla Dedrick</i>	Leahey & Leahey	Insights on PBS Hawaii	Washington Week	(6:00) Change Your Brain, Change Your Body
8:00		Antiques Roadshow <i>Madison, WI, Part 3</i>	NOVA <i>Pluto Files</i>	Faces of America <i>Know Thyself</i>		Now on PBS	The T.A.M.I. Show – Rock’n’Roll’s First Concert Film
8:30					PBS Hawaii Presents <i>Washington Place: Hawai’i’s First Home</i>	Bill Moyers Journal	
9:00		American Experience <i>Dolley Madison</i>	Frontline <i>The Suicide Tourist</i>	The National Parks: America’s Best Idea <i>The Morning of Creation (1946- 1980)</i>	PBS Hawaii Presents <i>Heart Strings: The Story of the Kamaka Ukulele</i>	The McLaughlin Group	
9:30					Rick Steves’ Europe <i>Athens and Side Trips</i>		
10:00					Morristown: Where America Survived	Independent Lens <i>The Eyes of Me</i>	Globe Trekker <i>East Africa: Tanzania &amp; Zanzibar</i>
10:30							
11:00		Faces of America <i>Our American Stories</i>	PBS Hawaii Picks	Long Story Short with Leslie Wilcox <i>Layla Dedrick</i>	PBS Hawaii Presents <i>Washington Place: Hawai’i’s First Home</i>	The Future of News <i>Non-Stop News: The 24/7 News Cycle</i>	
11:30				Leahey & Leahey	PBS Hawaii Presents <i>Heart Strings: The Story of the Kamaka Ukulele</i>	Washington Week	Loreena McKennitt

# WEEKLY EVENING SCHEDULE MARCH 7 - 13

	7   SUNDAY	8   MONDAY	9   TUESDAY	10   WEDNESDAY	11   THURSDAY	12   FRIDAY	13   SATURDAY
7:30	(7:00) National Geographic Magazine's Top 10 Photos of the Year	Na Mele <i>George Kahumoku</i>	Long Story Short with Leslie Wilcox <i>Puakea Nogelmeier</i>	Leahey & Leahey	The New Affluence: Money Help is on the Way	Washington Week	(6:30) Brain Fitness <i>Frontiers</i>
8:00	More Funny Ladies of British Comedy	The Priests in Concert at Liverpool Metropolitan Cathedral	Rounder Records 40th Anniversary Special	Change Your Brain, Change Your Body		Now on PBS	Celtic Women: Songs from the Heart
8:30						Bill Moyers Journal	
9:00	Roy Orbison: In Dreams				Michael Bolton Live at the Royal Albert Hall	Science Trek	
9:30	Roy Orbison & Friends: Black & White Night	The Miller Center National Debates <i>Do We Need More College Graduates?</i>	Rounder Records 40th Anniversary Special				
10:00	Independent Lens <i>No Subtitles Necessary: Laszlo and Vilmos</i>	Faces of America <i>Becoming American</i>		PBS Hawaii Picks	Long Story Short with Leslie Wilcox <i>Puakea Nogelmeier</i>	Great Performances <i>Sting: Songs from the Labyrinth</i>	The Future of News <i>What's the Future of TV News?</i>
10:30							Washington Week
11:00							
11:30							



# WEEKLY EVENING SCHEDULE MARCH 14 - 20

	14   SUNDAY	15   MONDAY	16   TUESDAY	17   WEDNESDAY	18   THURSDAY	19   FRIDAY	20   SATURDAY
7:30	(7:00) Chris Botti Live in Boston, Part II	Na Mele <i>Dennis &amp; David Kamakahi; Martin Pahinui; George Kuo</i>	Long Story Short <i>Puakea Nogelmeier on the Hawaiian Language</i>	Leahey & Leahey	Insights on PBS Hawaii	Washington Week	(6:30) Pat Boone: Love Letters in the Sands of Time
8:00	Great Performances Special: Michael Buble Meets Madison Square Garden	The Best of Daniel O'Donnell on Film	The T.A.M.I. Show – Rock'n'Roll's First Concert Film	When Irish Eyes Are Smiling: An Irish Parade of Stars		Now on PBS	Chris Botti Live in Boston, Part II
8:30					Bill Moyers Journal		
9:00				Ed Slott's Stay Rich for Life		Great Performances Special: Michael Buble Meets Madison Square Garden	
9:30	Rock and Roll Hall of Fame Live	Benise: The Spanish Guitar	The Misunderstood Epidemic: Depression	Celtic Thunder: It's Entertainment	The McLaughlin Group		
10:00					Insights on PBS Hawaii		Tuba U: Basso Profundo
10:30							
11:00	At Close Range with National Geographic	Faces of America <i>Making America</i>	PBS Hawaii Picks	Long Story Short <i>Puakea Nogelmeier on the Hawaiian Language</i>	Synchronized Swimming: The Pursuit of Excellence	The Future of News <i>Global News</i>	Austin City Limits <i>Lyle Lovett &amp; Friends: Songwriters Special</i>
11:30				Leahey & Leahey		Washington Week	

# WEEKLY EVENING SCHEDULE MARCH 21 - 27

	21   SUNDAY	22   MONDAY	23   TUESDAY	24   WEDNESDAY	25   THURSDAY	26   FRIDAY	27   SATURDAY
7:30	(6:30) Celtic Thunder: It's Entertainment	Magic Na Mele Moments	Long Story Short with Leslie Wilcox <i>The Maunakea-Forths</i>	Leahey & Leahey	Insights on PBS Hawaii	Washington Week	Burt Wolf: Travels & Traditions <i>Great Hotels of the World, Part 2</i>
8:00	Ed Sullivan's Rock and Roll Classics - The 60s		Pat Boone: Love Letters in the Sands of Time	NOVA <i>Cracking the Maya Code</i>		Great Performances <i>Dance In America: NY Export: Opus Jazz</i>	Now on PBS
8:30							
9:00		Frontline <i>Close to Home</i>	Great Performances at the Met <i>Les Contes d'Hoffmann</i>	PBS Hawaii Presents <i>Insular Empire: America in the Mariana Islands</i>	Bill Moyers Journal	Great Museums <i>An Acquiring Mind: Philippe de Montebello and the Metropolitan Museum of Art</i>	
9:30							
10:00	Austin City Limits <i>Bettye LaVette/ Pinetop Perkins</i>	American Masters <i>John James Audubon: Drawn From Nature</i>		Independent Lens <i>Lost Souls (Animas Perdidas)</i>	Globe Trekker <i>The Balkans</i>	Insights on PBS Hawaii	Soundstage <i>Willie Nelson</i>
10:30							
11:00	All About Prints	Faces of America <i>Know Thyself</i>	PBS Hawaii Picks	Great Performances at the Met <i>Les Contes d'Hoffmann</i>	PBS Hawaii Presents <i>Insular Empire: America in the Mariana Islands</i>	The Future of News <i>Political Reporting</i>	Austin City Limits <i>Bettye LaVette/ Pinetop Perkins</i>
11:30						Washington Week	

# EVENING SCHEDULE MARCH 28 - 31

	28   SUNDAY	29   MONDAY	30   TUESDAY	31   WEDNESDAY
7:30	(7:00) <b>Nature</b> <i>Clever Monkeys</i>	<b>Na Mele: Traditions in Hawaiian Song</b> <i>Jerry Santos and Friends</i>	<b>Long Story Short with Leslie Wilcox</b> <i>Leona Rocha Wilson</i>	<b>Leahey &amp; Leahey</b>
8:00	<b>Masterpiece Classic</b> <b>Masterpiece Classic</b> <i>Sharpe's Challenge</i>	<b>Antiques Roadshow</b> <i>Denver, CO, Part 1</i>	<b>NOVA</b> <i>Rat Attack</i>	<b>Tavis Smiley Reports One on One with MLK: A Call to Conscience</b>
8:30				
9:00		<b>American Experience</b> <i>Victory in the Pacific</i>	<b>Frontline</b> <i>The Quake</i>	<b>American Masters</b> <i>I.M. Pei: Building China Modern</i>
9:30				
10:00	<b>Magic Na Mele Moments</b>		<b>Independent Lens</b> <i>Whatever It Takes</i>	<b>The Street Stops Here</b>
10:30				
11:00	<b>Stephen Fry in America</b> <i>The Pacific</i>	<b>PBS Hawaii Picks</b>	<b>PBS Hawaii Picks</b>	<b>Leahey &amp; Leahey</b>
11:30				

**American Masters** *I.M. Pei: Building China Modern*





# Mahalo for Your Support



## The PBS Hawaii 4-Piece Kitchen Set

When you contribute \$65 or more, you'll receive a heartfelt thank you that is perfect for your home - our new PBS Hawaii 4-piece Kitchen Set. This attractive Plumeria Cream ensemble includes two terry cotton towels, a pot holder and an oven mitt. This holiday season, help bring high-quality, educational programming to your community and we'll be happy to give you this special gift from our 'ohana to yours.

Please mail donation to:

**PBS Hawaii P.O. Box 11599 Honolulu HI 96828**

Name: \_\_\_\_\_

Address: \_\_\_\_\_

City: \_\_\_\_\_ State: \_\_\_\_\_ Zip: \_\_\_\_\_

Phone: \_\_\_\_\_

Email: \_\_\_\_\_

☐ Visa ☐ Mastercard ☐ American Express ☐ Check

Card no. : \_\_\_\_\_ Exp: \_\_\_\_\_

Signature: \_\_\_\_\_

- ☐ \$1000+ President's Circle
- ☐ \$ 500 Broadcaster's Circle
- ☐ \$ 250 Director's Club
- ☐ \$ 120 Friend
- ☐ \$ 85 Family
- ☐ \$ 65 **PBS Hawaii Kitchen Set**
- ☐ \$ 35 Individual\*
- ☐ Other amount: \$ \_\_\_\_\_

\* For a gift of \$35 or more, you can choose to receive our monthly PBS Hawaii Magazine by mail or email.

This is an:

- ☐ Additional Gift
- ☐ Renewal
- ☐ New Membership

- ☐ No gift needed. I would like all of my donation to go towards quality programming for the community.
- ☐ Please check here if you do not want to receive the PBS Hawaii Aloha Diners Club Card
- ☐ Please check here if you do not want to receive the PBS Hawaii Magazine.
- ☐ Please check here if you would like to receive the PBS Hawaii e-magazine and include your email address.

For questions, please call (808) 973-1187.

*“PBS Hawaii...  
...Traditions in  
Hawaiian Song!”*



**PBS Hawaii**  
*and you!*