



PBS Hawaii

THE MONTHLY MAGAZINE OF HAWAII'S PUBLIC TELEVISION STATION | JANUARY 2012 | VOLUME 30, NUMBER 1



The Return of a Masterpiece

MASTERPIECE CLASSIC
Downton Abbey, Season 2

Editor

Roberta Wong Murray

Design/Photo Editor

Bryan Bosworth

Contributing Writers

Kaylee Noborikawa
Liberty Peralta

Communications Assistant

Abby Tateishi

Viewer Services

(808) 973-1187

PBS Hawaii

(808) 973-1000
Toll Free: (800) 238-4847

Comments/Suggestions

email@pbshawaii.org

Mailing Address

2350 Dole Street
Honolulu, HI 96822

Questions for Insights

insights@pbshawaii.org

Call-In

(808) 973-1000

Toll-Free

(800) 238-4847

Stay Connected

www.PBSHawaii.org

You can also follow
PBS Hawaii on
Facebook® & Twitter®



PBS Hawaii, a member of the Public Broadcasting Service (PBS), is a community-supported, non-commercial public television station broadcasting throughout the state of Hawaii.

PBS HAWAII magazine (ISSN: 1946-0813) is published monthly by the Hawaii Public Television Foundation, dba PBS Hawaii. Periodicals postage PAID at Honolulu, Hawaii and at additional entry mailing offices in Hilo, Kahului, Kailua-Kona, Kaunakakai, and Lihue. POSTMASTER: Send address changes to PBS Hawaii, Advancement Department, 2350 Dole Street, Honolulu, HI 96822.

On the Cover

Winner of six Emmy Awards, "Downton Abbey" depicts the lives of the noble Crawley family and the staff who serve them, set at their Edwardian country house in 1912. See page 13.



Starting 2012 with Post-Fire Recovery and Gratitude

LESLIE WILCOX *President and CEO*

Firefighters see it all the time. The shock and sadness of people watching their home or business beset by flames.

That was the story on the faces of our staff and students, here at PBS Hawaii in Manoa, last November 18. Our TV studio crew was setting up for the weekly show which I host, **Long Story Short**, when a large light bulb at the mauka end of the studio exploded, igniting a fast-spreading fire in overhead soundproofing material. Our crew members grabbed fire extinguishers, but they weren't able to stop the spread



KITV news producer Erica Simmons interviews our Communications VP Roberta Wong Murray.

of the blaze. Firefighters arrived quickly. Everyone in the building filed out calmly. When it became obvious that we weren't going to be able to go back to work that day, staffers were told they could go home. Shaken, quite a few people remained, wanting to learn the fate of the heart of our station, the studio and their own work spaces.

It's not terribly uncommon for studio lights to burst. But, usually the damage is not serious. I recall a time many years ago when Bob Jones and I were anchoring the 6:00 pm news on KGMB-TV, and a small studio light near us exploded with a surprisingly loud blast. In the tradition of live news, Bob and I kept delivering stories, even as little pieces of burning plastic alighted here and there, on the floor and on our anchor desk.

Then I realized that molten plastic had landed in Bob's hair. He hadn't felt the heat – yet. I reached up to tamp the small flame. Bob turned to look at me, astounded, silently questioning why the heck I was patting him on the head. Our television audience was never aware of what had happened. On the air, the sound of the explosion had sounded like background noise, and at the time of Bob's hair fire, he was voicing over video. During the next commercial break, we cleaned up and the show went on.

PBS Hawaii's fire was more serious. Our exploding light was a high-intensity bulb from a large fixture next to our cyclorama (known in the TV biz as a "cyc"), a wall meant to give the look of infinity. As firefighters trained water on the fire, they



Access was restricted on Dole and adjacent streets as police and firefighters responded to the fire.

of the blaze. Firefighters arrived quickly. Everyone in the building filed out calmly.

When it became obvious that we weren't going to be able to go back to work that day, staffers were told they could go home. Shaken, quite a few people remained, wanting to learn the fate of the heart of our station, the studio and their own work spaces.

It's not terribly uncommon for studio lights to burst. But, usu-

ally the damage is not serious. I recall a time many years ago when Bob Jones and I were anchoring the 6:00 pm news on KGMB-TV, and a small studio light near us exploded with a surprisingly loud blast. In the tradition of live news, Bob and I kept delivering stories, even as little pieces of burning plastic alighted here and there, on the floor and on our anchor desk.

Then I realized that molten plastic had landed in Bob's hair. He hadn't felt the heat – yet. I reached up to tamp the small flame. Bob turned to look at me, astounded, silently questioning why the heck I was patting him on the head. Our television audience was never aware of what had happened. On the air, the sound of the explosion had sounded like background noise, and at the time of Bob's hair fire, he was voicing over video. During the next commercial break, we cleaned up and the show went on.

PBS Hawaii's fire was more serious. Our exploding light was a high-intensity bulb from a large fixture next to our cyclorama (known in the TV biz as a "cyc"), a wall meant to give the look of infinity. As firefighters trained water on the fire, they



Specialty contractors work around studio lights.

did everything they could to protect the cyclorama and our pricey studio cameras. Later, our Production Manager Paul Hayashida, with the help of Chief Financial Officer Karen Yamamoto and Office Manager Kathleen Kosaka, got the cameras out of harm's way by lugging them down a hallway to our lobby. Our Board Chair, Robbie Alm, learned from breaking news alerts about the fire

and came to the scene. Our Board Members, viewers and other stakeholders called with offers of help. This is Hawaii, so people brought food!

Six weeks later, at the start of the New Year, we're still restoring the building, with the help of specialty contractors hired by our insurance company. The current phase is construction, to rebuild damaged parts of the studio. Previously, workers treated our air quality to get rid of smoke-related particulates. They dismantled studio equipment for cleaning, repair, replacement. They wiped down grimy work surfaces. They opened sensitive electronics and "scrubbed" them to remove soot, which causes long-term operational damage. Air conditioning techs cleaned smoke-soiled ducts throughout the building. They often had to turn off the A.C. and that meant a very warm work environment for people and machines. Sometimes the machines overheated and shut down.



Board Member Jean Kiyabu accepts viewer pledge of support.

Our staff and our viewers have been wonderful in dealing with the inconveniences, which we've tried to minimize, but cannot prevent. The fire knocked us off the air for 27 hours. We apologize for having several broadcast outages over these weeks related to restoration work.

PBS Hawaii missed shooting only a few local shows. Days after the fire, our team set up cameras in my office, using it as a temporary set for **Long Story Short**. It was very cramped, but the show looked good. Then, Don Kozono of the University of Hawaii at Manoa offered us the use of a student studio lab in the same building – and it's a tremendous help.

Right away, we used the small studio for a pledge-of-support TV drive, with the phone bank staffed by members of the Hawaii Fire Fighters Association. Among those joining us was Honolulu Fire Department spokesman Captain Terry Seelig, who has been a PBS Hawaii supporter and donor longer than he's been a fire fighter. On another evening, our Board of Directors, including those from Hawaii Island, Maui County and Kauai, took care of the phone bank.

While it was a misfortune to be hit by an accidental fire, our predominant feeling is gratitude. We're surrounded with *aloha* from citizens who value their public television station. We want to start the New Year by thanking you!

Hau'oli makahiki hou,

Leslie

PBS Hawaii Management

President and CEO
Leslie Wilcox

Senior Vice President/CFO
Karen Yamamoto

VP Creative Services
Robert Pennybacker

VP Programming and Communications
Roberta Wong Murray

VP Advancement
Lisa Levine

PBS Hawaii Board of Directors

Chair
Robert Alm

Vice Chair
Jason Fujimoto

Secretary
Tim Johns

Treasurer
Thomas Koide

Carolyn Berry

Jimmy Borges

Keiki-Pua Dancil, Ph.D.

Guy Fujimura

Gayle Harimoto

Ken Hiraki

Alan Hoffman

Joan Lee Husted

Kawika Kahiapo

Darren Kimura

Ian Kitajima

Jean Kiyabu

Patrick Kobayashi

Jackson Nakasone

Cameron Nekota

Shaunagh Robbins

Marissa Sandblom

David Watumull

PBS Hawaii's mission is to inspire, inform and entertain by providing high-quality programming and valuable services for our diverse island community.

Major support of the station comes from the people and businesses of Hawaii.

New Beginnings at PBS Hawaii

As we look toward the start of a new year, we here at PBS Hawaii have much to look forward to. But first, a look back at a major recent event. An accidental fire broke out in our studio November 18, after a heavy duty studio light popped and rapidly ignited the studio's flammable sound insulation. Thankfully, all employees were evacuated and no one was injured. The valiant efforts of firefighters helped to contain the damage.

Since then, specialty contractors have been repairing our studio and cleaning our air conditioning system, equipment and furniture throughout the building.

Our contractors say it will take several months to restore the studio. Although the initial repair estimate of \$250,000 will likely swell to as much as four times that cost, insurance is paying for the renovations and cleaning.

Out of disaster, we felt your aloha. Messages of concern poured in through emails, phone calls and Facebook comments. Many of you even offered to help clean up the mess. Here's a sampling of the warm notes we've received:

"All of us at NHK World are thinking of you as you recover from the recent setback, I'm sure you'll be stronger than ever when things are all put back together..."

– NHK World

"I am sure that the fire threw a wrench in a lot of the things going on over there... I am going to be on Oahu... so I will be around if you need help for cleaning up. Glad that everything seems relatively okay though and that nobody got hurt."

– Christen Hepuakoa Marquez,
Paradocs Productions

"Enclosed is a little gift for PBS [Hawaii]...with the hope that it'll brighten your Thanksgiving in spite of the fire!"

– David, Hilo

"I was so saddened to hear of the fire in your building and all the damage, but I'm glad no one was hurt. I know it will take time and money to get you back on the air and into production. Please accept this donation to get you started. We need you! Please hang in there and come back stronger than ever."

– Lyn, Manoa

In addition, we've been fortunate enough for the University of Hawaii at Manoa's School of Communications, particularly Don Kozono, to have lent us their adjacent student studio. With this space and remote locations, we're able to continue producing our weekly shows: **Long Story Short With Leslie Wilcox, Leahey & Leahey** and **Insights On PBS Hawaii**.

Restoration is well underway in the studio, which has been stripped down to the walls. More than 150 studio lights were dismantled and cleaned of soot with degreaser. Our set



Moana Beamer, Keola Beamer and R. Carlos Nakai from *Keola Beamer & Friends: Bridging Worlds Through Music*.

pieces were scrubbed down as well. After new insulation and walls are constructed, the clean equipment and set pieces will go back into place for a fresh start in our new studio.

And we'll literally be rising out of the ashes to bring you more of the programs you enjoy. With your support, we will emerge stronger than ever.

Looking Forward to 2012

In January, we're officially launching a public capital campaign to move into our future home, a new building on Nimitz Highway at Sand Island Access Road. We're aiming to raise \$30 million by the end of the year. Thanks to private donors and organizations, we are already just

past the halfway mark. This year, we'll be reaching out to more potential partners throughout our island community to help us reach our goal. Construction will begin in 2013 and relocation to our new PBS Hawaii headquarters will take place in early 2014.

Starting in May, a series of programs about Pacific Island culture, **Pacific Heartbeat**, will debut on public television stations nationwide. In partnership with Pacific Islanders in Communications, viewers across the U.S. will enjoy an authentic view of the islands through programs such as *Keola Beamer & Friends: Bridging the Worlds Through Music* and *Waimea 'Ukulele & Slack Key Guitar*.



David and Dennis Kamakahi performing in *Waimea 'Ukulele & Slack Key Guitar*.



PACIFIC HEARTBEAT

COOKE FOUNDATION'S \$50,000 GRANT BOOSTS CAPITAL CAMPAIGN



Sam Cooke
President, Cooke Foundation

Last month, we received an early Christmas present from the Cooke Foundation – the first installment of a \$50,000 grant to support PBS Hawaii's first-ever new building campaign. For almost 100 years, the Cooke Foundation has been a leader in philanthropy in Hawaii, supporting "the continuance of and expansion of all worthy endeavors for the betterment and welfare of this community." Happily, the Cooke Foundation Trustees agreed that a new home for PBS Hawaii is a worthy endeavor.

According to Sam Cooke, President of the Cooke Foundation:

"We are pleased to support PBS Hawaii's campaign to build a new world-class broadcast facility, so that it may continue to engage and inspire viewers throughout the community for years to come."

As a strong supporter of the arts, the Cooke Foundation recognizes the important role PBS Hawaii plays in delivering quality arts programming statewide. The new PBS Hawaii media complex, with space for live music performances, televised plays and audience seating, will enhance our ability to showcase the arts. It will give access to local productions that many in our community would not have the opportunity to experience otherwise.

In Mr. Cooke's words:

"PBS Hawaii has been a leader in presenting the finest examples of Hawaii's diverse cultural heritage, as well as productions that feature the best of other American and world cultural traditions. The Cooke Foundation is proud to support PBS Hawaii for bringing outstanding arts and cultural programs into Hawaii homes."

Mahalo, Cooke Foundation! Your support gets us closer to having permanent roots in the community!

PARTNER PROFILE: MARIANS ISLAND WIDE CATERING

Live pledge night at PBS Hawaii is always exciting for those involved, especially when there's delicious food to fuel our energy.

For eight years and counting, our pledge dinners have been provided by Marians Island Wide Catering. The company's wide variety of food includes flank steak, meatballs, teriyaki chicken and their two top sellers – sweet sour spareribs and pork long rice. PBS Hawaii staff agrees that Marians serves up *ono kine grinds!*

Since 1956, Marians Island Wide Catering has been providing excellent local food for a wide range of



Marians Island Wide Catering staff

events, from baby luaus to business meetings. In a single year, Marians caters approximately 175,000 meals. Today, this family-owned business is run out of Wahiawa by Aunty Marian's nephew, James Harada, along with his son, Scott.

"We particularly enjoy catering for PBS Hawaii because we are supporters of all the great people who work there, and of the top notch educational, cultural and entertaining programs," said Scott Harada.

Mahalo to Marians Island Wide Catering for ensuring that our staff and community volunteers always eat well!

PRODUCTION UNDERWRITER

Hawaiian Airlines

CORPORATE AND FOUNDATION UNDERWRITERS

ABC Stores
 Bank of Hawaii
 The Cades Foundation
 Cades Schutte LLP
 Cookie Corner Hawaii
 Cronin Fried Sekiya Kekina & Fairbanks
 First Hawaiian Bank
 First Insurance Company of Hawaii
 First Insurance Company of Hawaii Charitable Foundation
 John R. Halligan Charitable Fund
 Hawaii Credit Union League,
 on behalf of Hawaii's Credit Unions
 Hawaii Government Employees Assoc.
 Hawaii Medical Service Association
 Hawaii News Now
 Hawaii Pacific University

Hawaiian Airlines
 Hawaiian Telcom
 Keiki Care Center of Hawaii
 McInerny Foundation
 Dr. John Mirikitani
 John & Clifford Mirikitani Foundation
 Pigtails & Crewcuts
 Ruby Tuesday Hawaii
 Seven-Eleven Hawaii, Inc.
 Takitani & Agaran Law Corporation
 Atsuhiko and Ina Goodwin
 Tateuchi Foundation
 University of Hawaii Professional Assembly
 U.S. Pan Asian American Chamber of Commerce

IN-KIND SUPPORT

Cookie Corner Hawaii
 Marians Island Wide Catering
 NetEnterprise

UH Manoa School of Communications
 United Truck Rental

HIKI NŌ The Nation's First Statewide Student News Network

MAJOR DEVELOPMENT FUNDING

Corporation for Public Broadcasting
 The Clarence T.C. Ching Foundation
 Hawaii Community Foundation
 John S. and James L. Knight Foundation
 Wallace Alexander Gerbode Foundation
 W.K. Kellogg Foundation
 ...and supporters like you

FIRST-YEAR PROGRAM UNDERWRITING: Bank of Hawaii

ADDITIONAL DEVELOPMENT SUPPORT

Atherton Family Foundation
 Bays Lung Rose & Holma
 tw telecom
 Mākaha Studios
 G.N. Wilcox Trust
 S.W. Wilcox Trust

KTA Super Stores, in memory of Koichi and Taniyo Taniguchi, founders of KTA Super Stores and K. Taniguchi, Ltd.
 Annie Sinclair Knudsen Memorial Fund of the Hawaii Community Foundation

WAIMEA CANYON MIDDLE SCHOOL PREPARES FOR SPRING DEBUT

Students at Waimea Canyon Middle School on the west side of Kauai are hard at work on a story that will air during HIKI NŌ's third season beginning this spring.

Media Teacher Blaine Tsukayama says his students enjoy the "hands-on" experience of producing news stories for the statewide student newscast. "They get to be creative and use technology to tell their stories," he adds.

Pictured: Students from west Kauai's Waimea Canyon Middle School.



PBS Hawaii *and you!*

Meet Producers Circle Members Bob and Carolyn Kemble

Whether in Hawaii or on the mainland, Bob and Carolyn Kemble have been loyal supporters of public television.

Although the Kembles are retired, they have been part of the Producers Circle for three years, recently increasing their automatic monthly donation, which comes straight out of their bank account. They see the value of public television as priceless, and try to do whatever they can to support.

“We think PBS Hawaii is the best television station in Honolulu, that’s for sure.”

– Bob and Carolyn Kemble
Producers Circle Members



“We like being supporters of the programs we watch just to know we’re a part of it. The main reason we give is that we want to make sure that PBS Hawaii continues. Even with a limited income, we can still be good supporters of PBS because we do get a lot out of it. We wish we could do more.”

Every month the Kembles browse through the *PBS Hawaii Magazine* and pick out the programs they want to watch, marking the special one in their calendar. The couple enjoy a variety of programs on PBS Hawaii, including special

music productions such as **Na Mele**, and particularly **Long Story Short With Leslie Wilcox**. “We enjoy anytime they feature local personalities, such as Jimmy Borges. We really feel like we’ve gotten to know him through PBS.” Carolyn has also learned a lot from watching art lessons over the years. “We think PBS Hawaii is the best television station in Honolulu, that’s for sure.”

Members of the Producers Circle receive a number of benefits, such as:

- Continuous subscription to the *PBS Hawaii Magazine*
- One Aloha Diners Club Card
- An annual summary of your gifts near tax season
- Invitations to special events

For more information about the Producers Circle, please call 973-1370 or email csumida@pbshawaii.org



MAHALO!

In November, PBS Hawaii was struck with a disabling fire in our studio, the heart of our station. The overwhelming response from the community has lifted our spirits and shown us that public television is truly a relationship between PBS Hawaii *and you*.

As we start a new year and new beginning, we want to extend a warm mahalo to everyone who offered their support during these challenging times.

A special thank you to the Hawaii Fire Fighters Association and our PBS Hawaii Board Members for volunteering to answer the phones during our on-air live pledge drive in December. We're grateful for their time and energy, and for being there when we needed them the most.



1 Live Pledge hosts Jimmy Borges and Leslie Wilcox go on-camera with Joan Lee Husted. **2** PBS Hawaii Board Members (l-r): Darren Kimura, Marissa Sandblom, Joan Lee Husted, Keiki-Pua Dancil, Jean Kiyabu, Robert Alm, Gayle Harimoto, Jimmy Borges, PBS Hawaii President and CEO Leslie Wilcox, Jason Fujimoto. **3** Front: Captain Terry Seelig, Stacy Loe, Leslie Wilcox, Roberta Wong Murray, Jonathan Doane. Middle: Chad Inamasu, Bryant Lani, Estee Okumura, Scott Chung, Mitchell Kai. Back: Chad Laba, Travis DesRoches, Michael McMahon, Todd Fujie, Nicholas Hayler, John Hookano, Devin Sun, Ian Perry, and Scott Batula.

We appreciate your personal investment in our island home through Hawaii's only public television station. PBS Hawaii depends on your support to remain a vital resource of high-quality programming and community services that inspire, educate and entertain generations of viewers statewide. Please join, renew or consider contributing an additional gift by using our secure online form at www.PBSHawaii.org. Or mail a check to PBS Hawaii, Advancement Dept., P.O. Box 11599, Honolulu, HI 96828-0599. Mahalo for being an essential partner in the team of PBS Hawaii *and you!*

To pledge your support, please call (808) 973-1187 or visit: www.PBSHawaii.org

DIGITAL CABLE CHANNEL 443
Monday - Sunday | OCEANIC CABLE

5:00 am	SUPER WHY
5:30 am	DINOSAUR TRAIN
6:00 am	WORDGIRL
6:30 am	FETCH! WITH RUFF RUFFMAN
7:00 am	ARTHUR
7:30 am	THE ELECTRIC CO.
8:00 am	WILD KRATTS
8:30 am	MAYA & MIGUEL
9:00 am	MARTHA SPEAKS
9:30 am	SID THE SCIENCE KID
10:00 am	SESAME STREET
11:00 am	BARNEY AND FRIENDS
11:30 am	CLIFFORD THE BIG RED DOG
NOON	CURIOUS GEORGE
12:30 pm	THE CAT IN THE HAT
1:00 pm	SUPER WHY
1:30 pm	DINOSAUR TRAIN
2:00 pm	WORDGIRL
2:30 pm	FETCH! WITH RUFF RUFFMAN
3:00 pm	ARTHUR
3:30 pm	THE ELECTRIC CO.
4:00 pm	WILD KRATTS
4:30 pm	MAYA & MIGUEL
5:00 pm	MARTHA SPEAKS
5:30 pm	SID THE SCIENCE KID
6:00 pm	SESAME STREET
7:00 pm	BARNEY AND FRIENDS
7:30 pm	CLIFFORD THE BIG RED DOG
8:00 pm	CURIOUS GEORGE
8:30 pm	THE CAT IN THE HAT
9:00 pm	SUPER WHY
9:30 pm	DINOSAUR TRAIN
10:00 pm	WORDGIRL
10:30 pm	FETCH! WITH RUFF RUFFMAN
11:00 pm	ARTHUR
11:30 pm	THE ELECTRIC CO.
Midnight	WILD KRATTS
12:30 am	MAYA & MIGUEL
1:00 am	MARTHA SPEAKS
1:30 am	SID THE SCIENCE KID
2:00 am	SESAME STREET
3:00 am	BARNEY AND FRIENDS
3:30 am	CLIFFORD THE BIG RED DOG
4:00 am	CURIOUS GEORGE
4:30 am	THE CAT IN THE HAT

For the most current program and schedule information, please visit our website at www.PBSHawaii.org.

WEEKLY DAYTIME

	MONDAY-FRIDAY	SATURDAY	SUNDAY
5am	Wild Kratts	Cyberchase	Peep and the Big Wide World
5:30	WordWorld	Angelina Ballerina	Bob the Builder
6am	Sesame Street	Mr. Rogers' Neighborhood	Maya & Miguel
6:30		WordWorld	Mr. Rogers' Neighborhood
7am	Curious George	Arthur	Sesame Street
7:30	The Cat in the Hat	Martha Speaks	
8am	Super Why!	Caillou	Super Why!
8:30	Dinosaur Train	Clifford the Big Red Dog	Clifford's Puppy Days
9am	Barney & Friends	The Cat in the Hat	Barney & Friends
9:30	Sid the Science Kid	Wild Kratts	Sid the Science Kid
10am	Clifford the Big Red Dog	Thomas & Friends	Arthur
10:30	Caillou	Dinosaur Train	WordGirl
11am	Sesame Street	Fetch! with Ruff Ruffman	Curious George
11:30		The Electric Co.	Wild Kratts
noon	Arthur	Biz Kid\$	Antiques Roadshow
12:30	Martha Speaks	HIKI NŌ	
1pm	NHK Newline	Insights on PBS Hawaii	The This Old House Hour
1:30	NHK World		
2pm	NHK Newline	Best of The Joy of Painting	NOVA
2:30	NHK World	American Woodshop	
3pm	Wild Kratts	This Old House	HIKI NŌ
3:30	WordGirl	MotorWeek	Leahey & Leahey
4pm	Fetch! with Ruff Ruffman	Cuisine Culture	Long Story Short
4:30	The Electric Co.	America's Test Kitchen	Growing Bolder
5pm	NHK World	Nick Stellino Cooking...	Moyers & Company
5:30	Nightly Business Report	Kimchi Chronicles	
6pm	BBC World News	NHK Newline	NHK Newline
6:30	PBS NewsHour	NHK World	Your Japanese Kitchen

NHK WORLD

	MONDAY	TUESDAY	WEDNESDAY	THURSDAY	FRIDAY
1:00pm	NHK Newline	NHK Newline	NHK Newline	NHK Newline	NHK Newline
1:30	Tokyo Fashion Express	Imagine-nation	Japan Biz Cast	NHK World	NHK World TV (various)
2:00pm	NHK Newline	NHK Newline	NHK Newline	NHK Newline	NHK Newline
2:30	Journeys in Japan	Tokyo Eye	Begin Japanology	JIB Program	Somewhere Street
5:00pm	Asia 7 Days	Asia Biz Forecast	Venetia in Kyoto	Today's Close-up	China Wow!

Local airing of NHK programming is made possible in part by the generous support of: Atsuhiko and Ina Goodwin Tateuchi Foundation • Cronin Fried Sekiya Kekina & Fairbanks

SUNDAY	MONDAY	TUESDAY	WEDNESDAY	THURSDAY	FRIDAY	SATURDAY
1 7:00 GREAT PERFORMANCES <i>From Vienna: The New Year's Celebration 2012</i> 8:30 MASTERPIECE CLASSIC <i>Downton Abbey, Part 4 of 4</i> 10:00 GREAT PERFORMANCES <i>From Vienna: The New Year's Celebration 2012</i>	2 7:30 NA MELE <i>Hawaiian Airlines Presents: Na Mele at Halekulani's House Without A Key</i> 8:00 ANTIQUES ROADSHOW <i>Tulsa, OK, Part 1 of 3</i> 9:00 ANTIQUES ROADSHOW <i>Tampa, FL, Part 1 of 3</i>	3 7:30 LONG STORY SHORT WITH LESLIE WILCOX <i>Ryan Higa</i> 8:00 EGYPT'S GOLDEN EMPIRE <i>The Warrior Pharaohs</i> 9:00 EGYPT'S GOLDEN EMPIRE <i>Pharaohs of the Sun</i> 10:00 FRONTLINE <i>Opium Brides</i>	4 7:30 LEAHEY & LEAHEY 8:00 NATURE <i>Birds of the Gods</i> 9:00 NOVA <i>Deadliest Volcanoes</i> 10:00 NOVA <i>Deadliest Earthquakes</i> 11:00 NHK WORLD SPECIAL <i>Can You See Our Lights?: First Festival After the Tsunami</i>	5 7:30 HIKI NŌ 8:00 INSIGHTS ON PBS HAWAII 9:00 PBS HAWAII PRESENTS <i>Filmmakers' Forum II</i> 10:00 INDEPENDENT LENS <i>Taking Root: The Vision of Wangari Maathai</i> 11:00 GLOBE TREKKER <i>Micronesia</i>	6 7:30 WASHINGTON WEEK 8:00 NEED TO KNOW 8:30 THE MCLAUGHLIN GROUP 9:00 GREAT PERFORMANCES <i>Herbie Hancock, Gustavo Dudamel and the LA Phil Celebrate Gershwin</i> 10:00 TAVIS SMILEY REPORTS <i>Dudamel: Conducting a Life</i>	7 7:00 GREAT PERFORMANCES AT THE MET II <i>Trovatore</i> 9:30 PBS ARTS FROM THE BLUE RIDGE MOUNTAINS <i>Give Me the Banjo</i> 11:00 AUSTIN CITY LIMITS <i>Esperanza Spalding/Madeleine Peyroux</i>
8 7:00 ANGLE OF ATTACK <i>Part 1 of 2</i> 8:00 MASTERPIECE CLASSIC <i>Downton Abbey, Season 2, Part 1 of 7</i> 10:00 EGYPT'S GOLDEN EMPIRE <i>The Warrior Pharaohs</i> 11:00 EGYPT'S GOLDEN EMPIRE <i>Pharaohs of the Sun</i>	9 7:30 NA MELE <i>Cyril Pahinui and Peter Moon Jr.</i> 8:00 ANTIQUES ROADSHOW <i>Tulsa, OK, Part 2 of 3</i> 9:00 ANTIQUES ROADSHOW <i>Tampa, FL, Part 2 of 3</i> 10:00 MARTIN LUTHER <i>The Reluctant Revolutionary</i>	10 7:30 LONG STORY SHORT WITH LESLIE WILCOX <i>Nanci Kreidman</i> 8:00 EGYPT'S GOLDEN EMPIRE <i>The Last Great Pharaoh</i> 9:00 AMERICAN EXPERIENCE <i>Billy the Kid</i> 10:00 FRONTLINE A <i>Perfect Terrorist</i>	11 7:30 LEAHEY & LEAHEY 8:00 NATURE <i>Kangaroo Mob</i> 9:00 NOVA <i>Bombing Hitler's Dams</i> 11:00 LONG STORY SHORT WITH LESLIE WILCOX <i>Nanci Kreidman</i> 11:30 LEAHEY & LEAHEY	12 7:30 HIKI NŌ 8:00 INSIGHTS ON PBS HAWAII 9:00 PBS HAWAII PRESENTS <i>Artist III</i> 9:30 PBS HAWAII PRESENTS <i>Artist</i> 10:00 INDEPENDENT LENS <i>Have You Heard from Johannesburg?: Road to Resistance</i>	13 7:30 WASHINGTON WEEK 8:00 NEED TO KNOW 8:30 THE MCLAUGHLIN GROUP 9:00 GREAT PERFORMANCES <i>Let Me Down Easy</i> 11:00 AN EVENING WITH EARTHA KITT	14 8:00 INTERNATIONAL DANCESPORT WORLD CHAMPIONS 2010 <i>The Latin Championships</i> 9:00 PBS ARTS FROM CLEVELAND <i>Women Who Rock</i> 10:00 DO IT AGAIN 11:00 AUSTIN CITY LIMITS <i>Tom Waits</i>
15 7:00 ANGLE OF ATTACK <i>Part 2 of 2</i> 8:00 MASTERPIECE CLASSIC <i>Downton Abbey, Season 2, Part 2 of 7</i> 9:00 MASTERPIECE MYSTERY! <i>Sherlock: A Study in Pink</i>	16 7:30 NA MELE: TRADITIONS IN HAWAIIAN SONG <i>Raiatea Helm</i> 8:00 ANTIQUES ROADSHOW <i>Tulsa, OK, Part 3 of 3</i> 9:00 ANTIQUES ROADSHOW <i>Tampa, FL, Part 3 of 3</i>	17 7:30 LONG STORY SHORT WITH LESLIE WILCOX <i>Lawrence Tseu</i> 8:00 AMERICAN EXPERIENCE <i>Custer's Last Stand</i> 10:00 FRONTLINE <i>Nuclear Aftershocks</i>	18 7:30 LEAHEY & LEAHEY 8:00 NATURE <i>Broken Tail: A Tiger's Last Journey</i> 9:00 NOVA <i>3D Spies of WWII</i> 10:00 INSIDE NATURE'S GIANTS <i>Sperm Whale</i> 11:00 LONG STORY SHORT WITH LESLIE WILCOX <i>Lawrence Tseu</i>	19 7:30 HIKI NŌ 8:00 INSIGHTS ON PBS HAWAII 9:00 PBS HAWAII PRESENTS <i>Pidgin: The Voice of Hawaii</i> 10:00 INDEPENDENT LENS <i>Have You Heard from Johannesburg?: From Selma to Soweto</i>	20 7:30 WASHINGTON WEEK 8:00 NEED TO KNOW 8:30 THE MCLAUGHLIN GROUP 9:00 GREAT PERFORMANCES AT THE MET <i>Anna Bolena</i>	21 8:00 INTERNATIONAL DANCESPORT WORLD CHAMPIONSHIPS 2010 <i>The World Ten Dance Championships</i> 9:00 THE RENAISSANCE OF MATA ORTIZ 10:00 JULIA ROBINSON AND HILBERT'S TENTH PROBLEM
22 7:00 MASTERPIECE CLASSIC <i>Downton Abbey, Season 2, Part 2 of 7</i> 8:00 MASTERPIECE CLASSIC <i>Downton Abbey, Season 2, Part 3 of 7</i> 9:00 MASTERPIECE MYSTERY! <i>Sherlock: The Blind Banker</i>	23 7:30 NA MELE: TRADITIONS IN HAWAIIAN SONG <i>Dennis and David Kamakahii; Martin Pahinui; George Kuo</i> 8:00 ANTIQUES ROADSHOW <i>Eugene, OR, Part 1 of 3</i>	24 7:30 LONG STORY SHORT WITH LESLIE WILCOX <i>Terence Knapp</i> 8:00 AMERICAN EXPERIENCE <i>Wyatt Earp</i> 9:00 AMERICAN EXPERIENCE <i>Geronimo</i> 10:00 FRONTLINE <i>The Meth Epidemic</i>	25 7:30 LEAHEY & LEAHEY 8:00 NATURE <i>Fortress of the Bears</i> 9:00 NOVA <i>Mystery of a Masterpiece</i> 10:00 INSIDE NATURE'S GIANTS <i>Monster Python</i> 11:00 LONG STORY SHORT WITH LESLIE WILCOX <i>Terence Knapp</i>	26 7:30 HIKI NŌ 8:00 INSIGHTS ON PBS HAWAII 9:00 PBS HAWAII PRESENTS <i>Class of 2010</i> 10:00 INDEPENDENT LENS <i>Have You Heard from Johannesburg?: Free at Last</i> 11:00 GLOBE TREKKER <i>Papua New Guinea</i>	27 7:30 WASHINGTON WEEK 8:00 NEED TO KNOW 8:30 THE MCLAUGHLIN GROUP 9:00 GREAT PERFORMANCES <i>Tony Bennett: Duets II</i> 10:30 PBS ARTS FROM CHICAGO <i>American Masters Bill T. Jones: A Good Man</i>	28 8:00 INTERNATIONAL DANCESPORT WORLD CHAMPIONSHIPS 2010 <i>The Standard World Championships</i> 9:00 LANG LANG LIVE IN VIENNA 11:00 AUSTIN CITY LIMITS <i>Arcade Fire</i>
29 7:00 MASTERPIECE CLASSIC <i>Downton Abbey, Season 2, Part 3 of 7</i> 8:00 MASTERPIECE CLASSIC <i>Downton Abbey, Season 2, Part 4 of 7</i> 9:00 MASTERPIECE MYSTERY! <i>Sherlock: The Great Game</i>	30 7:30 NA MELE: TRADITIONS IN HAWAIIAN SONG <i>Jerry Santos and Friends</i> 8:00 ANTIQUES ROADSHOW <i>Eugene, OR, Part 2 of 3</i> 9:00 ANTIQUES ROADSHOW <i>Houston, TX, Part 2 of 3</i>	31 7:30 LONG STORY SHORT WITH LESLIE WILCOX <i>Nanette Napoleon</i> 8:00 AMERICAN EXPERIENCE <i>Annie Oakley</i> 9:00 AMERICAN EXPERIENCE <i>Jesse James</i> 10:00 FRONTLINE <i>Post Mortem</i>	LONG STORY SHORT WITH LESLIE WILCOX <i>Ryan Higa</i> Tuesday, January 3 7:30 PM <p>Leslie Wilcox talks story with Ryan Higa, also known as "Nigahiga" on YouTube. His self-produced online comedy videos led to the Hilo native's inadvertent, meteoric rise to national fame. Ryan reveals how he first started using video cameras, his thoughts on the entertainment business and a deal that tested his integrity.</p>			

PRIMETIME and WEEKENDS

PBS Hawaii is on the air seven days a week from 5AM to midnight. Viewers with cable service also have access to overnight programming. Viewers with cable service and high-definition (HD) TVs may watch PBS Hawaii in high-definition on Oceanic Time Warner Channel 1010.

CODING:

(e) encore (HD) high-definition

TBA Programming to be announced

When possible, encore broadcasts will be indicated in parentheses. All programs have closed-captioning. Late-breaking events may result in schedule changes. For more program information and the latest schedules, visit PBSHawaii.org.

Questions about programming changes?

Please call PBS Hawaii toll free:

(800) 238-4847

PBS Hawaii Over-the-Air

Broadcast Channels

(KHET) Channel 11.1 • 11.2

(KMEB) Channel 10.1 • 10.2

PBS Hawaii Oceanic

Time Warner Cable Channels

Basic Cable: Channel 10

Digital: Channel 90

HD: Channel 1010

PBS Hawaii Kids: Channel 443

I SUNDAY

Noon **ANTIQUES ROADSHOW** *Phoenix, AZ, Part 1 of 3 (e)*

1:00 **THE THIS OLD HOUSE HOUR**

2:00 **NOVA** *Extreme Ice (e)*

3:00 **HIKI NŌ** (e)

3:30 **LEAHEY & LEAHEY** *The Year in Review 2011 (HD) (e)*

4:00 **LONG STORY SHORT WITH LESLIE WILCOX** *Chipper and Hau'oli Wichman (HD) (e)*

4:30 **GROWING BOLDER** *Mind Over Matter (e)*

5:00 **RELIGION & ETHICS NEWSWEEKLY**

5:30 **TO THE CONTRARY WITH BONNIE ERBE**

6:00 **NHK NEWSLINE**

6:30 **YOUR JAPANESE KITCHEN**

7:00 **GREAT PERFORMANCES** *From Vienna: The New Year's Celebration 2012* Legendary star of stage and screen Julie Andrews returns as host of the festive annual New Year's celebration with the Vienna Philharmonic, under the direction of guest conductor Mariss Jansons, at Vienna's Musikverein.

8:30 **MASTERPIECE CLASSIC** *Downton Abbey, Part 4 of 4 (e)*

10:00 **GREAT PERFORMANCES** *From Vienna: The New Year's Celebration 2012 (e)*

11:30 **BURT WOLF: TRAVELS & TRADITIONS** *Connecting the Dots in America (e)*

Cable Only

Midnight **TRAVELSCOPE** *Ireland: The West is Best*

12:30 **MASTERPIECE CLASSIC** *Downton Abbey, Part 4 of 4*

2:00 **LIVE FROM LINCOLN CENTER** *Bernstein and Gershwin*

2 MONDAY

7:30 **NA MELE: TRADITIONS IN HAWAIIAN SONG** *Hawaiian Airlines Presents: Na Mele at Halekulani's House Without A Key (e)*

8:00 **ANTIQUES ROADSHOW** *Tulsa, OK, Part 1 of 3*

9:00 **ANTIQUES ROADSHOW** *Tampa, FL, Part 1 of 3 (e)*

10:00 **MARTIN LUTHER** *Driven to Defiance (e)*

11:00 **NHK WORLD SPECIAL** *Radiation: Fighting the Invisible Enemy* This program records the struggles villagers faced as their village's very existence was threatened.

Cable Only

Midnight **CHARLIE ROSE**

1:00 **MASTERPIECE CLASSIC** *Downton Abbey*

2:30 **GREAT PERFORMANCES** *Hugh Laurie: Let Them Talk - A Celebration of New Orleans Blues*

3:30 **SKY ISLAND**

3 TUESDAY

7:30 **LONG STORY SHORT WITH LESLIE WILCOX** *Ryan Higa (HD) See sidebar, page 11.*

8:00 **EGYPT'S GOLDEN EMPIRE** *The Warrior Pharaohs (e)*

9:00 **EGYPT'S GOLDEN EMPIRE** *Pharaohs of the Sun (e)*

10:00 **FRONTLINE** *Opium Brides*

11:00 **NHK WORLD SPECIAL** *Doctors Facing the Tsunami* With vivid footage from the hospitals during the 200 hours following the disaster, the program portrays the reality of the deterioration in medical services.

Cable Only

Midnight **CHARLIE ROSE**

1:00 **EGYPT'S GOLDEN EMPIRE** *Pharaohs of the Sun*

2:00 **MARTIN LUTHER** *Driven to Defiance*

3:30 **ANTIQUES ROADSHOW** *Tulsa, OK*

4 WEDNESDAY

7:30 **LEAHEY & LEAHEY** (HD)

8:00 **NATURE** *Birds of the Gods (e)*

9:00 **NOVA** *Deadliest Volcanoes* Travel with scientists who are attempting to discover how likely volcanoes are to erupt, when eruptions

might happen and how deadly they could prove to be.

10:00 **NOVA** *Deadliest Earthquakes (e)*

11:00 **NHK WORLD SPECIAL** *Can You See Our Lights?: First Festival After the Tsunami* The program includes interviews with festival committee members busily repairing damaged floats and drums and encouraging the participation of dispersed former residents. They explain what they hope to accomplish by continuing the tradition.

Cable Only

Midnight **CHARLIE ROSE**

1:00 **NOVA** *Deadliest Earthquakes*

2:00 **EGYPT'S GOLDEN EMPIRE** *The Warrior Pharaohs*

3:00 **EGYPT'S GOLDEN EMPIRE** *Pharaohs of the Sun*

5 THURSDAY

7:30 **HIKI NŌ**

8:00 **INSIGHTS ON PBS HAWAII**

9:00 **PBS HAWAII PRESENTS** *Filmmakers' Forum II*

10:00 **INDEPENDENT LENS** *Taking Root: The Vision of Wangari Maathai*

11:00 **GLOBE TREKKER** *Micronesia (e)*

Cable Only

Midnight **CHARLIE ROSE**

1:00 **FRONTLINE** *Opium Brides*

2:00 **NOVA** *Deadliest Volcanoes*

3:00 **NATURE** *Birds of the Gods*

6 FRIDAY

7:30 **WASHINGTON WEEK**

8:00 **NEED TO KNOW**

8:30 **THE MCLAUGHLIN GROUP**

9:00 **GREAT PERFORMANCES** *Herbie Hancock, Gustavo Dudamel and the LA Phil Celebrate Gershwin* Enjoy an all-Gershwin program as Gustavo Dudamel conducts the LA Philharmonic, with a special guest appearance by virtuoso jazz pianist Herbie Hancock.

10:00 **TAVIS SMILEY REPORTS** *Dudamel: Conducting a Life (e)*

11:00 **GERSHWIN AT ONE SYMPHONY PLACE** (e)

Cable Only

Midnight **CHARLIE ROSE**

1:00 **TAVIS SMILEY REPORTS** *Dudamel: Conducting a Life*

2:00 **ANTIQUES ROADSHOW** *Tulsa, OK*

3:00 **THE THIS OLD HOUSE HOUR**

7 SATURDAY

Noon **BIZ KID\$** *A World Without Taxes(e)*

12:30 **HIKI NŌ** (e)

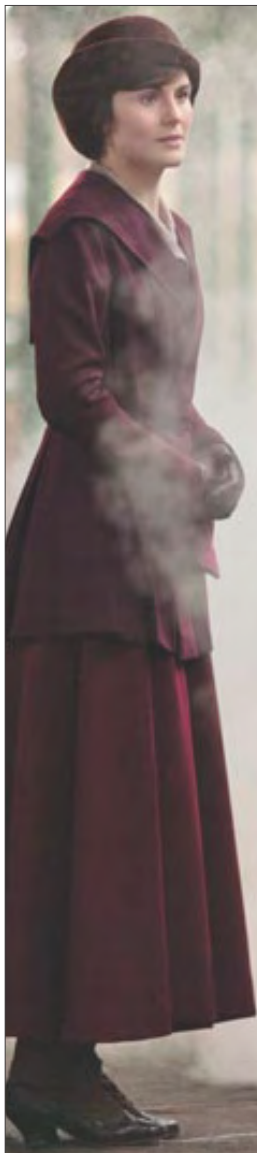
1:00 **INSIGHTS ON PBS HAWAII** (e)

2:00 **THE BEST OF THE JOY OF PAINTING**

2:30 **AMERICAN WOODSHOP** *Turned Boxes*

3:00 **THIS OLD HOUSE**

Ongoing restoration activity may affect scheduled programming in January, resulting in listing changes. Please check www.PBSHawaii.org for updated information. Thank you for your patience and understanding.



MASTERPIECE CLASSIC *Downton Abbey* Season 2 Premiere

Sunday, January 8 | **8 PM** *Part 1 of 7*
 Sunday, January 15 | **8 PM** *Part 2 of 7*
 Sunday, January 22 | **8 PM** *Part 3 of 7*
 Sunday, January 29 | **8 PM** *Part 4 of 7*

One of the most phenomenally popular series in MASTERPIECE history is back for an exciting second season: *Downton Abbey Season 2* resumes its story of love and intrigue at an English country estate, now mobilized for the trauma of war. The second season promises to be as satisfying as the first, with thwarted and rekindled romances, forgotten and fresh scandals and enough new plot twists to weave a tapestry with Lord Grantham's family crest.

"MASTERPIECE viewers took *Downton Abbey* to heart and they won't be disappointed with season two," says MASTERPIECE Executive Producer Rebecca Eaton. "The cast we love is back and screenwriter Julian Fellowes is in top form. No one can equal him at breathing life into a world that vanished almost a century ago."



3:30 MOTORWEEK

4:00 **CUISINE CULTURE** *Guy Savoy, Las Vegas*

4:30 **AMERICA'S TEST KITCHEN FROM COOK'S ILLUSTRATED** *Grilled Steak and Gazpacho*

5:00 **NICK STELLINO COOKING WITH FRIENDS** *Italian Desserts*

5:30 **KIMCHI CHRONICLES** *The Chicken Chronicles (e)*

6:00 **NHK NEWSLINE**

6:10 **SCIENCE ZERO**

6:40 **MEET & SPEAK**

6:50 **THE GREAT SUMMITS**

7:00 **GREAT PERFORMANCES AT THE MET II** *Trovatore*

9:30 **PBS ARTS FROM THE BLUE RIDGE MOUNTAINS** *Give Me the Banjo*

11:00 **AUSTIN CITY LIMITS** *Esperanza Spalding/Madeleine Peyroux (e)*

Cable Only

Midnight **FRONTLINE** *Opium Brides*

1:00 **INDEPENDENT LENS** *Taking Root: The Vision of Wangari Maathai*

2:00 **GREAT PERFORMANCES** *Herbie Hancock, Gustavo Dudamel and the LA Phil Celebrate Gershwin*

3:00 **WASHINGTON WEEK**

3:30 **NEED TO KNOW**

8 SUNDAY

Noon **ANTIQUES ROADSHOW** *Tulsa, OK Part 1 of 3 (e)*

1:00 **THE THIS OLD HOUSE HOUR**

2:00 **NOVA** *Deadliest Volcanoes (e)*

3:00 **HIKI NŌ (e)**

3:30 **LEAHEY & LEAHEY (HD) (e)**

4:00 **LONG STORY SHORT WITH LESLIE WILCOX** *Ryan Higa (HD) (e)*

4:30 **GROWING BOLDER** *Quiet Confidence (e)*

5:00 **RELIGION & ETHICS NEWSWEEKLY**

5:30 **TO THE CONTRARY WITH BONNIE ERBE**

6:00 **NHK NEWSLINE**

6:30 **YOUR JAPANESE KITCHEN**

7:00 **ANGLE OF ATTACK** *Part 1 of 2*

8:00 **MASTERPIECE CLASSIC** *Downton Abbey, Season 2, Part 1 of 7* Two years into World War I, *Downton Abbey* is in turmoil. See sidebar, above.

10:00 **EGYPT'S GOLDEN EMPIRE** *The Warrior Pharaohs (e)*

11:00 **EGYPT'S GOLDEN EMPIRE** *Pharaohs of the Sun (e)*

Cable Only

Midnight TAVIS SMILEY REPORTS *Dudamel: Conducting a Life*

1:00 GREAT PERFORMANCES *Herbie Hancock, Gustavo Dudamel and the LA Phil Celebrate Gershwin*

2:00 ANTIQUES ROADSHOW *Tulsa, OK*

3:00 NATURE *Birds of the Gods*

9 MONDAY

7:30 NA MELE *Cyril Pahinui and Peter Moon Jr. (e)*

8:00 ANTIQUES ROADSHOW *Tulsa, OK, Part 2 of 3*

9:00 ANTIQUES ROADSHOW *Tampa, FL, Part 2 of 3*

10:00 MARTIN LUTHER *The Reluctant Revolutionary (e)*

11:00 ANGLE OF ATTACK *Part 1 of 2 (e)*

Cable Only

Midnight CHARLIE ROSE

1:00 MASTERPIECE CLASSIC *Downton Abbey, Season 2, Part 1 of 7*

3:00 GREAT PERFORMANCES *Herbie Hancock, Gustavo Dudamel and the LA Phil Celebrate Gershwin*

10 TUESDAY

7:30 LONG STORY SHORT WITH LESLIE WILCOX *Nanci Kreidman (HD) (e)*

8:00 EGYPT'S GOLDEN EMPIRE *The Last Great Pharaoh (e)*

9:00 AMERICAN EXPERIENCE *Billy the Kid*
This film deconstructs the mythology of the notorious outlaw Billy the Kid.

10:00 FRONTLINE *A Perfect Terrorist (e)*

11:00 PBS HAWAII PICKS

Cable Only

Midnight CHARLIE ROSE

1:00 AMERICAN EXPERIENCE *Billy the Kid*

2:00 MARTIN LUTHER *The Reluctant Revolutionary*

3:00 ANTIQUES ROADSHOW *Tulsa, OK*

11 WEDNESDAY

7:30 LEAHEY & LEAHEY (HD)

8:00 NATURE *Kangaroo Mob* Meet the mob of street-smart kangaroos moving into Australia's capital city and the ecologists who follow their every move.

9:00 NOVA *Bombing Hitler's Dams* Learn about the revolutionary bouncing bomb and the bombers who destroyed two gigantic dams in Germany's industrial heartland during WWII.

11:00 LONG STORY SHORT WITH LESLIE WILCOX *Nanci Kreidman (HD) (e)*

11:30 LEAHEY & LEAHEY (e)

Cable Only



INDEPENDENT LENS

Have You Heard from Johannesburg?

Thursday, January 12 | **10 PM, 11 PM**

Thursday, January 19 | **10 PM, 11 PM**

Thursday, January 26 | **10 PM**

Filed throughout the world over the course of more than ten years, *Have You Heard From Johannesburg?* is the definitive cinematic history of the worldwide effort to destroy South African apartheid. A story that has never been told in any medium before and featuring interviews with dozens of the major players, this formidable accomplishment is anything but dry and academic: it's a lively, tension-filled, heartrending, and ultimately thrilling portrait of an unprecedented global movement that forever changed a nation and the world. The five-part series includes the episodes *Road to Resistance*, *The New Generation*, *From Selma to Soweto*, *The Bottom Line* and *Free at Last*. Pictured: Bishop Desmond Tutu.

Midnight CHARLIE ROSE

1:00 MARTIN LUTHER *The Reluctant Revolutionary*

2:00 AMERICAN EXPERIENCE *Billy the Kid*

3:00 EGYPT'S GOLDEN EMPIRE *The Last Great Pharaoh*

12 THURSDAY

7:30 HIKI NŌ

8:00 INSIGHTS ON PBS HAWAII

9:00 PBS HAWAII PRESENTS *Artist III (e)*

9:30 PBS HAWAII PRESENTS *Artist*

10:00 INDEPENDENT LENS *Have You Heard from Johannesburg?: Road to Resistance* See sidebar, above.

11:00 INDEPENDENT LENS *Have You Heard from Johannesburg?: The New Generation* See sidebar, above.

Cable Only

Midnight CHARLIE ROSE

1:00 INDEPENDENT LENS *Have You Heard from Johannesburg?: Road to Resistance*

2:00 NOVA *Bombing Hitler's Dams*

3:30 SKY ISLAND

13 FRIDAY

7:30 WASHINGTON WEEK

8:00 NEED TO KNOW

8:30 THE MCLAUGHLIN GROUP

9:00 GREAT PERFORMANCES *Let Me Down Easy*
Meet a range of individuals who are confronting the price and politics of health, all portrayed by Anna Deavere Smith.

11:00 AN EVENING WITH EARTHA KITT (e)

Cable Only

Midnight CHARLIE ROSE

1:00 INDEPENDENT LENS *Have You Heard from Johannesburg?: The New Generation*

2:00 FRONTLINE *A Perfect Terrorist*

3:00 THE THIS OLD HOUSE HOUR

14 SATURDAY

Noon BIZ KID\$ *Debt: The Good, The Bad & The Ugly (e)*

12:30 HIKI NŌ (e)

1:00 INSIGHTS ON PBS HAWAII (e)

2:00 THE BEST OF THE JOY OF PAINTING

2:30 AMERICAN WOODSHOP *Shaker Inspired Wall Cabinets*

3:00 THIS OLD HOUSE

3:30 MOTORWEEK

4:00 CUISINE CULTURE *Josiah Citirn, Los Angeles*

4:30 AMERICA'S TEST KITCHEN FROM COOK'S ILLUSTRATED *Lazy Day Breakfast*

5:00 NICK STELLINO COOKING WITH FRIENDS *Veal, Spaghetti and Meatballs*

5:30 KIMCHI CHRONICLES *The Pork Chronicles (e)*

6:00 NHK NEWSLINE

6:10 SCIENCE ZERO

6:40 MEET & SPEAK

6:50 THE GREAT SUMMITS

7:00 BURT WOLF: TRAVELS & TRADITIONS *Atlantic Crossing*

7:30 TRAVELSCOPE *Taiwan: The Culture of Tea (e)*

8:00 INTERNATIONAL DANCESPORT WORLD CHAMPIONS 2010 *The Latin Championships*

9:00 PBS ARTS FROM CLEVELAND *Women Who Rock*

10:00 DO IT AGAIN In this film, Geoff Edgers, a Boston Globe reporter, goes on an unlikely quest to reunite surviving members of the Kinks.

11:00 AUSTIN CITY LIMITS *Tom Waits*

Cable Only

Midnight PBS ARTS FROM CLEVELAND *Women Who Rock*

1:00 INDEPENDENT LENS *Have You Heard from Johannesburg?: Road to Resistance*

2:00 INDEPENDENT LENS *Have You Heard from Johannesburg?: The New Generation*

3:00 WASHINGTON WEEK

3:30 NEED TO KNOW

15 SUNDAY

Noon ANTIQUES ROADSHOW *Tulsa, OK, Part 2 of 3 (e)*

1:00 THE THIS OLD HOUSE HOUR

2:00 NOVA *Deadliest Volcanos (e)*

3:00 HIKI NŌ (e)

3:30 LEAHEY & LEAHEY (HD) (e)

4:00 LONG STORY SHORT WITH LESLIE WILCOX *Nanci Kreidman (HD) (e)*

4:30 GROWING BOLDER *No Limits (e)*

5:00 MOYERS & COMPANY See sidebar, below.

6:00 NHK NEWSLINE

6:30 YOUR JAPANESE KITCHEN

7:00 ANGLE OF ATTACK *Part 2 of 2*

8:00 MASTERPIECE CLASSIC *Downton Abbey, Season 2, Part 2 of 7* Downton is turned into a convalescent home. See sidebar, page 13.

9:00 MASTERPIECE MYSTERY! *Sherlock: A Study in Pink (e)*

10:30 TO THE CONTRARY WITH BONNIE ERBE

11:00 EGYPT'S GOLDEN EMPIRE *The Last Great Pharaoh (e)*

Cable Only

Midnight NOVA *Deadliest Earthquakes*

1:00 GREAT PERFORMANCES *Let Me Down Easy*

3:00 NATURE *Kangaroo Mob*

16 MONDAY

7:30 NA MELE: TRADITIONS IN HAWAIIAN SONG *Raiatea Helm (e)*

8:00 ANTIQUES ROADSHOW *Tulsa, OK, Part 3 of 3*

9:00 ANTIQUES ROADSHOW *Tampa, FL, Part 3 of 3 (e)*

10:00 IN PERFORMANCE AT THE WHITE HOUSE *A Celebration of Music From the Civil Rights Movement (e)*

11:00 ANGLE OF ATTACK *Part 2 of 2 (e)*

Cable Only

Midnight CHARLIE ROSE

1:00 MASTERPIECE CLASSIC *Downton Abbey, Season 2, Part 2 of 7*

2:00 MASTERPIECE MYSTERY! *Sherlock: A Study in Pink*

3:30 SKY ISLAND

MOYERS & COMPANY

Sundays | 5 PM

Series begins January 15

Bill Moyers returns on-air and online in January 2012 with **MOYERS & COMPANY**, a weekly hour of compelling and vital conversation about life and the state of American democracy, featuring some of the best thinkers of our time. A range of scholars, artists, activists, scientists, philosophers and newsmakers bring context, insight and meaning to important topics. The series occasionally includes Moyers' own timely and penetrating essays on society

and government. In a multimedia marketplace saturated with shallow sound bites and partisan name-calling, **MOYERS & COMPANY** digs deeper. As the Los Angeles Times put it in 2010, "No one on television has centralized the discussion of ideas as much as Moyers... He not only gives a forum to unusual thinkers, he is truly interested in what they have to say and who they are because he believes their ideas really matter."



17 TUESDAY

7:30 LONG STORY SHORT WITH LESLIE WILCOX

Lawrence Tseu Leslie Wilcox talks story with Lawrence Tseu, a nationally recognized Honolulu dentist and philanthropist. As a boy in Kalihi who literally grew up on the wrong side of the tracks, Lawrence shined shoes and sold newspapers to pay for his tuition at St. Louis. Lawrence talks about the joys and struggles of growing up in the slums and his journey to dentistry. (HD)

8:00 AMERICAN EXPERIENCE *Custer's Last Stand*

10:00 FRONTLINE *Nuclear Aftershocks (e)*

11:00 INTERNATIONAL DANCESPORT WORLD CHAMPIONSHIPS 2010 *The Latin Championships (e)*

Cable Only

Midnight CHARLIE ROSE

1:00 NOT AS I PICTURED

2:00 IN PERFORMANCE AT THE WHITE HOUSE

A Celebration of Music From the Civil Rights Movement

3:00 ANTIQUES ROADSHOW *Tulsa, OK*

18 WEDNESDAY

7:30 LEAHEY & LEAHEY (HD)

8:00 NATURE *Broken Tail: A Tiger's Last Journey (e)*

9:00 NOVA *3D Spies of WWII*

10:00 INSIDE NATURE'S GIANTS *Sperm Whale*

11:00 LONG STORY SHORT WITH LESLIE WILCOX

Lawrence Tseu (HD) (e)

11:30 LEAHEY & LEAHEY (HD) (e)

Cable Only

Midnight CHARLIE ROSE

1:00 INSIDE NATURE'S GIANTS *Sperm Whale*

2:00 AMERICAN EXPERIENCE *Custer's Last Stand*

19 THURSDAY

7:30 HIKI NŌ

8:00 INSIGHTS ON PBS HAWAII

9:00 PBS HAWAII PRESENTS *Pidgin: The Voice of Hawaii (e)*

10:00 INDEPENDENT LENS *Have You Heard from Johannesburg?: From Selma to Soweto* See sidebar, page 14.

11:00 INDEPENDENT LENS *Have You Heard from Johannesburg?: The Bottom Line* See sidebar, page 14.

Cable Only

Midnight CHARLIE ROSE

1:00 INDEPENDENT LENS *Have You Heard from Johannesburg?: The Bottom Line*

2:00 FRONTLINE *Nuclear Aftershocks*

3:00 IN PERFORMANCE AT THE WHITE HOUSE *A Celebration of Music From the Civil Rights Movement*

20 FRIDAY

7:30 WASHINGTON WEEK

8:00 NEED TO KNOW

8:30 THE MCLAUGHLIN GROUP

9:00 GREAT PERFORMANCES AT THE MET *Anna Bolena* See sidebar, below.

Cable Only

12:30 CHARLIE ROSE

1:30 WASHINGTON WEEK

2:00 NEED TO KNOW

2:30 THE MCLAUGHLIN GROUP

3:00 PORTRAITS OF EMOTION

21 SATURDAY

Noon BIZ KID\$ *Your Big Purchase (e)*

12:30 HIKI NŌ (e)

1:00 INSIGHTS ON PBS HAWAII (e)

2:00 THE BEST OF THE JOY OF PAINTING

2:30 AMERICAN WOODSHOP *Windsor Arrow Back Chairs*

3:00 THIS OLD HOUSE

3:30 MOTORWEEK

4:00 CUISINE CULTURE *Pascal Aussignac, London*

4:30 COOK'S COUNTRY FROM AMERICA'S TEST KITCHEN *Two Perfect Pies*

5:00 NICK STELLINO COOKING WITH FRIENDS *Pork Dishes*

5:30 KIMCHI CHRONICLES *The Street Food Chronicles (e)*

6:00 NHK NEWSLINE

6:10 SCIENCE ZERO

6:40 MEET & SPEAK

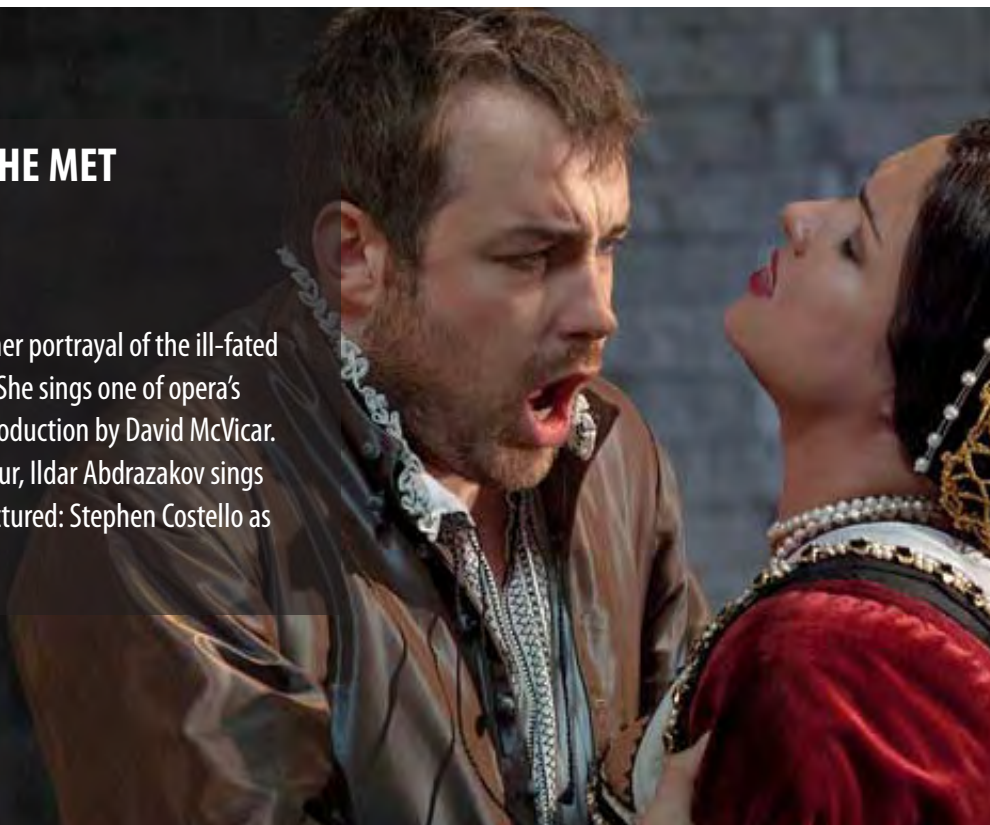
6:50 THE GREAT SUMMITS

GREAT PERFORMANCES AT THE MET

Anna Bolena

Friday, January 20 | 9 PM

Anna Netrebko opens the Met season with her portrayal of the ill-fated queen driven insane by her unfaithful king. She sings one of opera's greatest mad scenes in this Met premiere production by David McVicar. Ekaterina Gubanova is her rival, Jane Seymour, Ildar Abdrazakov sings Henry VIII and Marco Armiliato conducts. Pictured: Stephen Costello as Percy and Anna Netrebko as Anna Bolena.



A Resource That Shines Brightly

The PBS Hawaii LED Flashlight Radio
No batteries needed, just wind it up!



With your gift of \$65 or more to PBS Hawaii, you'll help keep the light shining brightly for future generations with our mahalo gift to you — our new **LED Flashlight Radio**. The multi-purpose wind-up flashlight comes with an emergency siren and an FM radio that scans each station with a touch of a button. This handy 3-in-1 accessory is great to keep in your home or car and is useful in emergency situations. Measures 7" x 2" x 1.5".



You can use the form on page 19 or simply make your contribution online: www.PBSHawaii.org

7:00 BURT WOLF: TRAVELS & TRADITIONS

Cruising the Rivers of Europe: Amsterdam to Cologne

7:30 TRAVELSCOPE *Taiwan: Aboriginal People (e)*

8:00 INTERNATIONAL DANCESPORT WORLD CHAMPIONSHIPS 2010 *The World Ten Dance Championships*

9:00 THE RENAISSANCE OF MATA ORTIZ

The amazing story of how an intrepid American adventurer and a brilliant self-taught Mexican artist transformed a dying desert village into a home for world-class ceramics.

10:00 JULIA ROBINSON AND HILBERT'S TENTH PROBLEM

11:00 AUSTIN CITY LIMITS *The Head and The Heart/Gomez*

Cable Only

Midnight FRONTLINE *Nuclear Aftershocks*

1:00 INDEPENDENT LENS *Have You Heard from Johannesburg?: From Selma to Soweto*

2:00 INDEPENDENT LENS *Have You Heard from Johannesburg?: The Bottom Line*

3:00 WASHINGTON WEEK

3:30 NEED TO KNOW

22 SUNDAY

Noon ANTIQUES ROADSHOW *Tulsa, OK, Part 3 of 3 (e)*

1:00 THE THIS OLD HOUSE HOUR

2:00 NOVA *3D Spies of WWII (e)*

3:00 HIKI NŌ (e)

3:30 LEAHEY & LEAHEY (HD) (e)

4:00 LONG STORY SHORT WITH LESLIE WILCOX

Lawrence Tseu (HD) (e)

4:30 GROWING BOLDER *Small Actions, Big Impacts (e)*

5:00 MOYERS & COMPANY See sidebar, page 15.

6:00 NHK NEWSLINE

6:30 YOUR JAPANESE KITCHEN

7:00 MASTERPIECE CLASSIC *Downton Abbey, Season 2, Part 2 of 7 (e)*

8:00 MASTERPIECE CLASSIC *Downton Abbey, Season 2, Part 3 of 7* Matthew and William embark on a perilous patrol behind German lines. See sidebar, page 13.

9:00 MASTERPIECE MYSTERY! *Sherlock: The Blind Banker (e)*

10:30 TO THE CONTRARY WITH BONNIE ERBE

11:00 INSIDE NATURE'S GIANTS *Sperm Whale (e) Cable Only*

Midnight THE RENAISSANCE OF MATA ORTIZ

1:00 AMERICAN EXPERIENCE *Custer's Last Stand*

3:00 NATURE *Broken Tail: A Tiger's Last Journey*

23 MONDAY

7:30 NA MELE: TRADITIONS IN HAWAIIAN SONG

Dennis and David Kamakahi; Martin Pahinui; George Kuo (e)

8:00 ANTIQUES ROADSHOW *Eugene, OR, Part 1 of 3*

9:00 ANTIQUES ROADSHOW *Houston, TX, Part 1 of 3 (e)*

10:00 AMERICAN MASTERS *Phil Ochs: There But for Fortune* This film examines the life and artistry of activist and singer-songwriter Phil Ochs.

11:30 PBS HAWAII PICKS

Cable Only

Midnight CHARLIE ROSE

1:00 GROWING BOLDER *Small Actions: Big Impact*

1:30 MASTERPIECE MYSTERY! *Sherlock: The Blind Banker*

3:00 ANTIQUES ROADSHOW *Eugene, OR*

24 TUESDAY

7:30 **LONG STORY SHORT WITH LESLIE WILCOX**

Terence Knapp (HD) (e)

8:00 **AMERICAN EXPERIENCE** *Wyatt Earp* This episode uncovers the complexities of the Western lawman whose life is a lens on politics, justice and economic opportunity on the American frontier.

9:00 **AMERICAN EXPERIENCE** *Geronimo (e)*

10:00 **FRONTLINE** *The Meth Epidemic (e)*

11:00 **INTERNATIONAL DANCESPORT WORLD CHAMPIONSHIPS 2010** *The World Ten Dance Championships (e)*

Cable Only

Midnight **CHARLIE ROSE**

1:00 **AMERICAN EXPERIENCE** *Wyatt Earp*

2:00 **AMERICAN MASTERS** *Phil Ochs: There But for Fortune*

3:00 **SKY ISLAND**

25 WEDNESDAY

7:30 **LEAHEY & LEAHEY (HD) (e)**

8:00 **NATURE** *Fortress of the Bears* Find out what the future may hold for Alaska's brown bears.

9:00 **NOVA** *Mystery of a Masterpiece*

10:00 **INSIDE NATURE'S GIANTS** *Monster Python*

11:00 **LONG STORY SHORT WITH LESLIE WILCOX**

Terence Knapp (HD) (e)

11:30 **LEAHEY & LEAHEY (HD) (e)**

Cable Only

Midnight **CHARLIE ROSE**

1:00 **INSIDE NATURE'S GIANTS** *Monster Python*

2:00 **ANTIQUES ROADSHOW** *Eugene, OR*

3:00 **ANTIQUES ROADSHOW** *Houston, TX*

26 THURSDAY

7:30 **HIKI NŌ**

8:00 **INSIGHTS ON PBS HAWAII (e)**

9:00 **PBS HAWAII PRESENTS** *Class of 2010*

Facing the threat of school closure, students from Hawaii Academy of Arts & Science filmed their lives at this and other public charter schools in Puna, Hawaii Island. The film presents an intimate look at the Puna community, the inner workings of charter schools and the ongoing local efforts toward educational reform.

10:00 **INDEPENDENT LENS** *Have You Heard from Johannesburg?: Free at Last* See sidebar, page 14.

11:00 **GLOBE TREKKER** *Papua New Guinea*

Cable Only

Midnight **CHARLIE ROSE**

1:00 **FRONTLINE** *The Meth Epidemic*

2:00 **AMERICAN EXPERIENCE** *Geronimo*

3:00 **NATURE** *Fortress of the Bears*

27 FRIDAY

7:30 **WASHINGTON WEEK**

8:00 **NEED TO KNOW**

8:30 **THE MCLAUGHLIN GROUP**

9:00 **GREAT PERFORMANCES** *Tony Bennett: Duets II* See sidebar, below.

10:30 **PBS ARTS FROM CHICAGO** *American Masters* *Bill T. Jones: A Good Man (e)*

Cable Only

Midnight **CHARLIE ROSE**

1:00 **WASHINGTON WEEK**

1:30 **AMERICAN MASTERS** *Phil Ochs: There But for Fortune*

3:00 **THE THIS OLD HOUSE HOUR**

28 SATURDAY

Noon **BIZ KID\$** *What's Up with the Stock Market? (e)*

12:30 **HIKI NŌ (e)**

1:00 **INSIGHTS ON PBS HAWAII (e)**

2:00 **THE BEST OF THE JOY OF PAINTING**

2:30 **AMERICAN WOODSHOP** *Nested Band Sawn Boxes*

3:00 **THIS OLD HOUSE**

3:30 **MOTORWEEK**

4:00 **CUISINE CULTURE** *Marc Haerberlin, Colmar, France*

4:30 **COOK'S COUNTRY FROM AMERICA'S TEST KITCHEN** *Family Supper*

5:00 **NICK STELLINO COOKING WITH FRIENDS** *Cajun Chicken & Salad*

5:30 **KIMCHI CHRONICLES** *The Seoul Food Chronicles (e)*

6:00 **NHK NEWSLINE**

6:10 **SCIENCE ZERO**

6:40 **MEET & SPEAK**

6:50 **THE GREAT SUMMITS**

7:00 **BURT WOLF: TRAVELS & TRADITIONS** *The Great Rivers of Europe: Cologne to Zell*

7:30 **TRAVELSCOPE** *Greece: Cruising the Isles (e)*

8:00 **INTERNATIONAL DANCESPORT WORLD CHAMPIONSHIPS 2010** *The Standard World Championships*

9:00 **LANG LANG LIVE IN VIENNA**

11:00 **AUSTIN CITY LIMITS** *Arcade Fire*

Cable Only

Midnight **INDEPENDENT LENS** *Have You Heard from Johannesburg?: Free at Last*

1:00 **GREAT PERFORMANCES** *Tony Bennett: Duets II*



GREAT PERFORMANCES

Tony Bennett: Duets II

Friday, January 27 | 9 PM

In celebration of his 85th birthday, the legendary Tony Bennett released the critically acclaimed *Duets II*, which followed his Grammy-winning *Duets* CD, released in honor of his 80th birthday. Bennett made music history with *Duets II* when it debuted at the top of the Billboard Album charts, making Bennett the oldest artist to ever achieve the #1 spot. Pictured: Tony Bennett and Lady Gaga.

HELP US KEEP THE LIGHT SHINING BRIGHTLY FOR FUTURE GENERATIONS!

Please mail your contribution to:
PBS Hawaii, P.O. Box 11599, Honolulu, HI 96828

Name: _____

Address: _____

City: _____ State: _____ Zip: _____

Phone: _____

E-mail: _____

VISA Mastercard American Express Check _____

Card No.: _____ Exp.: _____

Signature: _____

- \$1000 Presidents Circle
- \$500 Broadcasters Circle
- \$250 Directors Club
- \$120 Friend
- \$85 Family
- \$65 PBS Hawaii Flashlight Radio
- \$35 Individual* _____
- Other amount: \$ _____

* For a gift of \$35 or more, you can choose to receive our monthly PBS Hawaii Magazine by mail or e-mail.

For questions, please call PBS Hawaii Viewer Services at (808) 973-1187. *Mahalo!*

- No gift needed. I would like my entire donation to go toward quality programming for the community.
- Please check here if you **do not** want to receive the Aloha Diners Club Card with your donation of \$65 or more.
- Please check here if you **do not** want to receive the PBS Hawaii Magazine.
- Please check here if you would like to receive the PBS Hawaii e-magazine. Please include your e-mail.
- Please check here if you would like to receive the Windward Mall Festival of Giving Pass with your donation of \$65 or more.

My favorite programs on PBS Hawaii are:

**2:30 ARCHITECT ROBERT A.M. STERN:
 PRESENCE OF THE PAST**

3:00 WASHINGTON WEEK

3:30 NEED TO KNOW

29 SUNDAY

Noon ANTIQUES ROADSHOW Eugene, OR, Part 1 of 3 (e)

1:00 THE THIS OLD HOUSE HOUR

2:00 NOVA Mystery of a Masterpiece (e)

3:00 HIKI NŌ (e)

3:30 LEAHEY & LEAHEY (HD) (e)

4:00 LONG STORY SHORT WITH LESLIE WILCOX
 Terence Knapp (HD) (e)

4:30 GROWING BOLDER Dreams Never Die (e)

5:00 MOYERS & COMPANY See sidebar, page 15.

6:00 NHK NEWSLINE

6:30 YOUR JAPANESE KITCHEN

7:00 MASTERPIECE CLASSIC Downton Abbey, Season 2, Part 3 of 7 (e)

8:00 MASTERPIECE CLASSIC Downton Abbey, Season 2, Part 4 of 7 In the climactic battle of the war, Matthew and William go over the top to an uncertain fate. See sidebar, page 13.

9:00 MASTERPIECE MYSTERY! Sherlock: The Great Game (e)

10:30 TO THE CONTRARY WITH BONNIE ERBE

11:00 INSIDE NATURE'S GIANTS Monster Python (e)

Cable Only

Midnight GLOBE TREKKER Micronesia

1:00 GREAT PERFORMANCES Tony Bennett: Duets II

2:30 NATURE Fortress of the Bears

**3:30 ARCHITECT ROBERT A.M. STERN:
 PRESENCE OF THE PAST**

30 MONDAY

7:30 NA MELE: TRADITIONS IN HAWAIIAN SONG Jerry Santos and Friends (e)

8:00 ANTIQUES ROADSHOW Eugene, OR, Part 2 of 3

9:00 ANTIQUES ROADSHOW Houston, TX, Part 2 of 3 (e)

10:00 SECRETS OF THE DEAD Sinking Atlantis (e)

11:00 PBS HAWAII PICKS

Cable Only

Midnight CHARLIE ROSE

1:00 MASTERPIECE CLASSIC Downton Abbey, Season 2, Part 4 of 7

2:00 MASTERPIECE MYSTERY! The Great Game

3:30 ARCHITECT ROBERT A.M. STERN: PRESENCE OF THE PAST

31 TUESDAY

7:30 LONG STORY SHORT WITH LESLIE WILCOX Nanette Napoleon (HD) (e)

8:00 AMERICAN EXPERIENCE Annie Oakley (e)

9:00 AMERICAN EXPERIENCE Jesse James (e)

10:00 FRONTLINE Post Mortem (e)

11:00 INTERNATIONAL DANCESPORT WORLD CHAMPIONSHIPS 2010 The Standard World Championships (e)

Cable Only

Midnight CHARLIE ROSE

1:00 AMERICAN EXPERIENCE Annie Oakley

2:00 SECRETS OF THE DEAD Sinking Atlantis

3:00 ANTIQUES ROADSHOW Eugene, OR

PBS Hawaii
2350 Dole Street
Honolulu, Hawaii 96822

Periodicals Dated Material



**Coming
Soon...**

**PBS HAWAII
PRESENTS**
Homealani

The story of Colonel Oliver Homealani Kupau during a time of cultural, social, economic and political change in Hawaii.

 **PBS Hawaii**