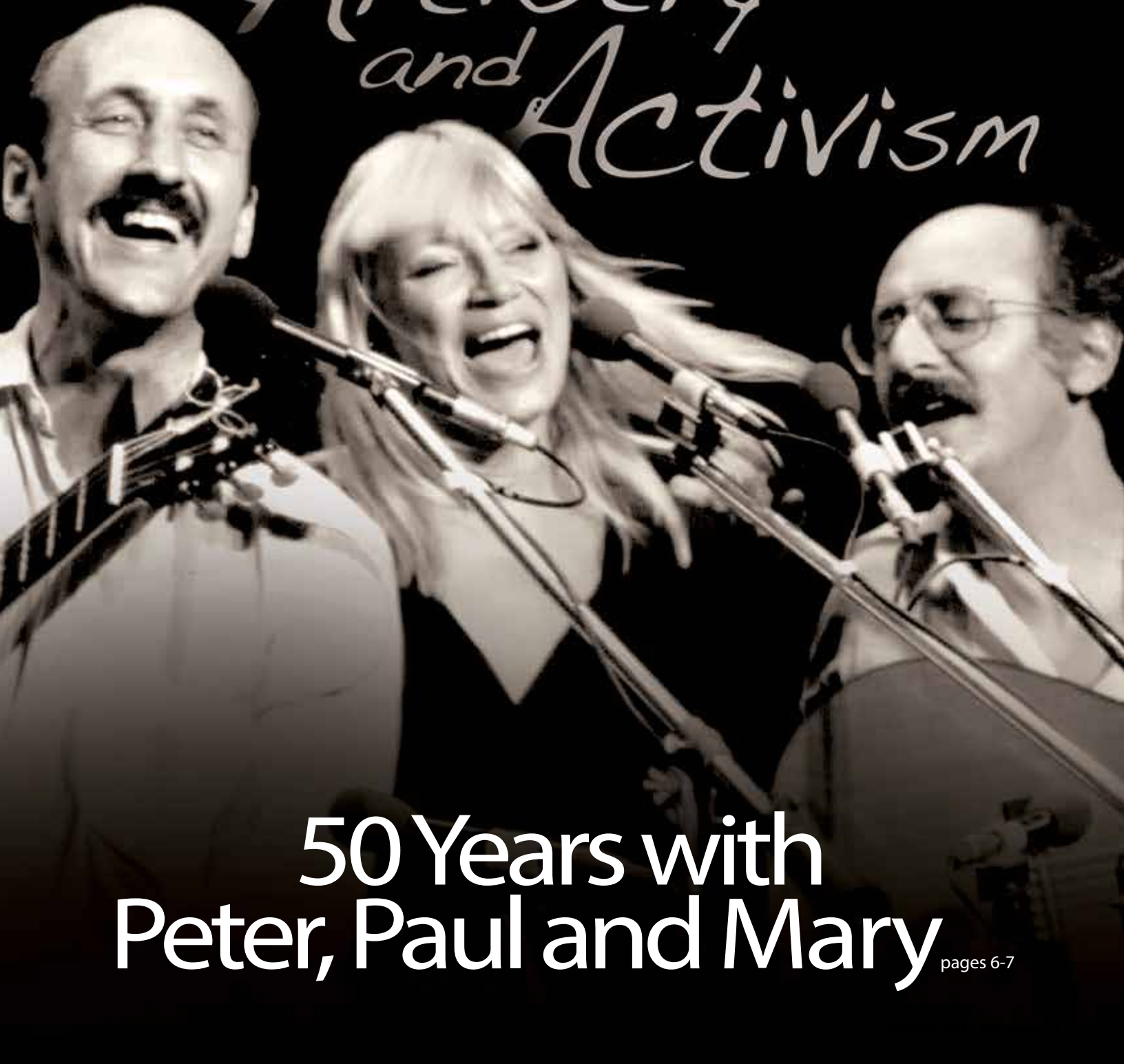


PBS Hawaii

Program Guide | December 2014 | Vol 32, No. 12

Artistry and Activism



50 Years with Peter, Paul and Mary

pages 6-7



Leslie Wilcox
PBS Hawaii
President and CEO

The Journey to Now: PBS Hawaii's NEW HOME Groundbreaking

There were bright smiles and tears of joy at a highly anticipated moment: groundbreaking for PBS Hawaii's NEW HOME.

The event took place at the site of the former KFVE Newsplex at a corner of Nimitz Highway and Sand Island Access Road.

You might think groundbreaking is the start of this building project. Not so. We were a long time in reaching this starting point! But the end is in sight: PBS Hawaii's NEW HOME is scheduled for completion in early 2016.

This journey to a NEW HOME began with the University of Hawaii at Manoa deciding to re-purpose the building we now lease for its own student instruction. Because it's no easy task moving a statewide public television station, the UH generously gave us time to relocate.

Over several years, our Board



From left: Former Board Chair Neil Hannahs; current Board Chair Robbie Alm; Leslie Wilcox; HIKI NŌ graduate Victoria Cuba; Board Facilities Chair Cameron Nekota; Group 70 International Vice Chair Sheryl Seaman; Allied Builders System VP and Chief Estimator Justin Izumi

directed contributions and organizational savings so we could buy a new site outright. The opportunity came during January 2009; it was during the Great Recession. The price for this acre along the Nimitz corridor was \$5.2 million.

The Clarence T.C. Ching Foundation pledged \$5 million more. That allowed us to get to

work designing a building for the 21st century. Broadcast technology and digital media changed rapidly and sometimes immensely; we had to keep re-imagining.

Now, here we are, with a creative and solid plan by Group 70 International and with Allied Builders System revving up equipment to construct a two-story,

PBS Hawaii

PBS Hawaii Management

President and CEO

Leslie Wilcox

Senior Vice President/COO

Karen Yamamoto

VP Creative Services

Roy Kimura

VP Advancement

Ben Nishimoto

Executive Producer Learning Initiatives

Robert Pennybacker

Chief Engineer

John Nakahira

PBS Hawaii Board of Directors

Chair

Robert Alm

Vice Chair

Marissa Sandblom

Secretary

Bettina Mehnert

Treasurer

Kent Tsukamoto

Susan Bendon
Carolyn Berry Wilson

Jodi Endo Chai
Keola Donaghy
Matthew Emerson
Joanne Lo Grimes

Gayle Harimoto
Ken Hiraki
Charlyn Honda Masini
Kawika Kahiapo
Noelani Kalipi
Darren Kimura
Ian Kitajima
Jean Kiyabu
Joy Miura Koerte
Kamani Kual'au
Mary Ann Manahan
David McEwan, M.D.
Cameron Nekota
Aaron Salā
Ka'iulani Sodaro
Candy Suiso
Bruce Voss

PBS Hawaii Program Guide

Editor

Liberty Peralta

Design/Photo Editor

Bryan Bosworth

Contributing Writers

Roy Kimura
Ben Nishimoto
Liberty Peralta

Program Listings

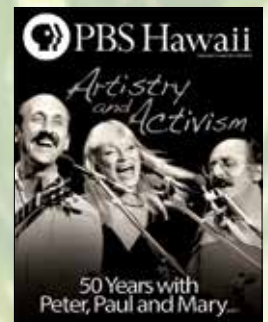
John Kovacich
Jill Matsumoto

Administrative Assistant

Meriel Collins

Communications Assistant

Emily Bodfish



On the Cover An intimate exploration of the trio that brought folk music to America's mass audiences and the impact the artistry and activism has had on their generation and the world. See page 7.



30,000-square-foot building. It'll have open interior space encouraging collaboration; a main television studio; an emergency broadcast center; and a Media Innovation Center for our community, including **HIKI NŌ** students and teachers.



The total price tag is \$30 million, including the land cost. With about \$23.5 million raised, thanks to the people of Hawaii, we have \$6.5 million to go. We're seeking help from those who enjoy our programming or projects — and have not yet contributed. Everything counts. We welcome all help to continue serving as Hawaii's largest classroom, biggest presenter of performing arts, and as a rich video archive of the state's people, culture and history. For more information, call 955-0500 or go to PBSHawaii.org/newhome.



Spread: PBS Hawaii staff, board members and **HIKI NŌ** students from Waipahu High School attended the small groundbreaking ceremony last month. Inset: A graphic rendering of the building's exterior, top; and the 2,000-square-foot Media Innovation Center, planned for the middle of the building's second floor, where students, teachers and community members will convene.

Thankfully,

Leslie

SUNDAY	MONDAY	TUESDAY	WEDNESDAY	THURSDAY	FRIDAY	SATURDAY
<p>NOVA <i>First Man on the Moon</i> Wednesday, Dec. 3 9:00 pm</p> 	<p>1 7:30 NA MELE <i>Ale'a</i> 8:00 ANTIQUES ROADSHOW <i>Junk in the Trunk 4, Part 1 of 2</i> 9:30 SONGS OF JOY: A PBS HAWAII HOLIDAY CELEBRATION 10:30 IL VOLO BUON NATALE</p>	<p>2 7:30 LONG STORY SHORT WITH LESLIE WILCOX <i>Jim Burns: A Local Boy</i> 8:00 AMERICAN MASTERS <i>Bing Crosby Rediscovered</i> 10:00 RENEE FLEMING: CHRISTMAS IN NEW YORK 11:00 NA MELE TREASURES III</p>	<p>3 7:30 LEAHEY & LEAHEY 8:00 BEST OF BIRDS 9:00 NOVA <i>First Man on the Moon</i> 10:30 THE NEW IRONMENTALISTS <i>From Ithaca to the Amazon</i> 11:00 LONG STORY SHORT WITH LESLIE WILCOX <i>Jim Burns: A Local Boy</i></p>	<p>4 7:30 HIKI NŌ 8:00 INSIGHTS ON PBS HAWAII 9:00 50 YEARS WITH PETER, PAUL AND MARY 11:00 SONGS OF JOY: A PBS HAWAII HOLIDAY CELEBRATION</p>	<p>5 7:30 WASHINGTON WEEK WITH GWEN IFILL 8:00 CHARLIE ROSE – THE WEEK 8:30 THE MCLAUGHLIN GROUP 9:00 A TRIBUTE TO BRUCE SPRINGSTEEN</p>	<p>6 7:00 THE MIND OF A CHEF <i>Locality</i> 7:30 JACKIE EVANCHO – AWAKENING: LIVE IN CONCERT 9:00 JOHN SEBASTIAN PRESENTS: FOLK REWIND 11:00 AUSTIN CITY LIMITS <i>Juanes/Jesse & Joy</i></p>
<p>7 7:00 MASTERPIECE CLASSIC <i>Downton Abbey, Season 4, Part 1 of 8</i> 9:00 MASTERPIECE CLASSIC <i>Downton Abbey, Season 4, Part 2 of 8</i> 10:00 RUSSIA'S OPEN BOOK: WRITING IN THE AGE OF PUTIN</p>	<p>8 7:30 NA MELE <i>Amy Hanaiali'i Gilliom and Willie K</i> 8:00 MAGIC MOMENTS: THE BEST OF 50'S POP 10:00 GREAT PERFORMANCES <i>Andrea Bocelli: Love in Portofino</i></p>	<p>9 7:30 LONG STORY SHORT WITH LESLIE WILCOX <i>Jim Burns: His Own Man</i> 8:00 SUZE ORMAN'S FINANCIAL SOLUTIONS FOR YOU 10:00 ROCK, POP AND DOO WOP</p>	<p>10 7:30 LEAHEY & LEAHEY 8:00 NA MELE: JERRY SANTOS 9:30 STRAIGHT NO CHASER: SONGS OF THE DECADES 11:00 LONG STORY SHORT WITH LESLIE WILCOX <i>Jim Burns: His Own Man</i> 11:30 LEAHEY & LEAHEY</p>	<p>11 7:30 HIKI NŌ 8:00 INSIGHTS ON PBS HAWAII 9:00 GREAT PERFORMANCES <i>Tony Bennett & Lady Gaga: Cheek to Cheek LIVE!</i> 10:30 GREAT PERFORMANCES <i>Rod Stewart: Merry Christmas, Baby</i></p>	<p>12 7:30 WASHINGTON WEEK WITH GWEN IFILL 8:00 CHARLIE ROSE – THE WEEK 8:30 THE MCLAUGHLIN GROUP 9:00 LIVE FROM LINCOLN CENTER <i>Curtain Up: The School of American Ballet Workshop Performances</i></p>	<p>13 7:00 THE MIND OF A CHEF <i>Documentation</i> 7:30 THE BIG BAND YEARS 9:30 ELVIS, ALOHA FROM HAWAII 11:00 AUSTIN CITY LIMITS <i>Jason Isbell/Neko Case</i></p>
<p>14 7:00 MASTERPIECE CLASSIC <i>Downton Abbey, Season 4, Part 3 of 8</i> 8:00 MASTERPIECE CLASSIC <i>Downton Abbey, Season 4, Part 4 of 8</i> 9:00 MASTERPIECE CLASSIC <i>Downton Abbey, Season 4, Part 5 of 8</i></p>	<p>15 7:30 NA MELE <i>Makaha Sons</i> 8:00 ANTIQUES ROADSHOW <i>Junk in the Trunk 4, Part 2 of 2</i> 9:00 ANTIQUES ROADSHOW <i>Denver, CO, Part 3 of 3</i> 10:00 EUROPEAN CHRISTMAS MARKETS</p>	<p>16 7:30 LONG STORY SHORT WITH LESLIE WILCOX <i>Daniel Martinez</i> 8:00 SACRED JOURNEYS WITH BRUCE FEILER <i>Loures</i> 9:00 SACRED JOURNEYS WITH BRUCE FEILER <i>Shikoku</i> 10:00 RICKOVER: THE BIRTH OF NUCLEAR POWER</p>	<p>17 7:30 LEAHEY & LEAHEY 8:00 BURT BACHARACH'S BEST 9:30 GREAT PERFORMANCES <i>Rejoice with Itzhak Perlman and Cantor Yitzhak Meir Helfgot</i> 11:00 LONG STORY SHORT WITH LESLIE WILCOX <i>Daniel Martinez</i></p>	<p>18 7:30 HIKI NŌ 8:00 INSIGHTS ON PBS HAWAII 9:00 PBS HAWAII PRESENTS <i>Family Ingredients</i> 10:00 GLOBE TREKKER <i>Globe Trekker Special: Art Trails of the French Riviera</i> 11:00 XMAS WITHOUT CHINA</p>	<p>19 7:30 WASHINGTON WEEK WITH GWEN IFILL 8:00 CHARLIE ROSE – THE WEEK 8:30 THE MCLAUGHLIN GROUP 9:00 CHRISTMAS WITH THE MORMON TABERNACLE CHOIR FEATURING DEBORAH VOIGT AND JOHN RHYS-DAVIES</p>	<p>20 7:00 THE MIND OF A CHEF <i>Fäviken</i> 7:30 CHRISTMAS ON THE DANUBE 8:00 CHRISTMAS IN ALSACE WITH CHEF HUBERT KELLER 9:00 AROUND THE WORLD: THE CRANE CANDLELIGHT CONCERT</p>
<p>21 7:00 TALES FROM THE ROYAL BEDCHAMBER 8:00 MASTERPIECE CLASSIC <i>Downton Abbey, Season 4, Part 6 of 8</i> 9:00 MASTERPIECE CLASSIC <i>Downton Abbey, Season 4, Part 7 of 8</i></p>	<p>22 7:30 NA MELE <i>George Winston (Plays Slack Key)</i> 8:00 ANTIQUES ROADSHOW <i>The Boomer Years</i> 9:00 ANTIQUES ROADSHOW <i>Phoenix, AZ, Part 1 of 3</i> 10:00 INDEPENDENT LENS <i>Jiro Dreams of Sushi</i></p>	<p>23 7:30 LONG STORY SHORT WITH LESLIE WILCOX <i>Victoria Cuba</i> 8:00 SACRED JOURNEYS WITH BRUCE FEILER <i>Jerusalem</i> 9:00 SACRED JOURNEYS WITH BRUCE FEILER <i>Hajj</i> 10:00 FRONTLINE <i>From Jesus to Christ: The First Christians, Part 1 of 2</i></p>	<p>24 7:30 CHRISTMAS ON THE DANUBE 8:00 CHRISTMAS WITH THE MORMON TABERNACLE CHOIR FEATURING DEBORAH VOIGT AND JOHN RHYS-DAVIES 9:00 HOLIDAY HANDBELLS: THE RALEIGH RINGERS</p>	<p>25 7:30 HIKI NŌ 8:00 CALL THE MIDWIFE HOLIDAY SPECIAL 9:30 VICIOUS HOLIDAY SPECIAL 10:00 GLOBE TREKKER <i>Globe Trekker Food Hour: Sicily</i> 11:00 TALES FROM THE ROYAL BEDCHAMBER</p>	<p>26 7:30 WASHINGTON WEEK WITH GWEN IFILL 8:00 CHARLIE ROSE – THE WEEK 8:30 THE MCLAUGHLIN GROUP 9:00 AMERICAN MASTERS <i>Bing Crosby Rediscovered</i> 10:30 CALL THE MIDWIFE HOLIDAY SPECIAL</p>	<p>27 7:00 GREAT PERFORMANCES AT THE MET <i>Cosi Fan Tutte</i> 10:30 VICIOUS HOLIDAY SPECIAL 11:00 AUSTIN CITY LIMITS <i>Tom Waits</i></p>
<p>28 7:00 THE GREAT BRITISH BAKE OFF 8:00 MASTERPIECE CLASSIC <i>Downton Abbey, Season 4, Part 8 of 8</i> 10:00 SECRETS OF HIGHCLERE CASTLE 11:00 TO THE CONTRARY WITH BONNIE ERBE</p>	<p>29 7:30 NA MELE <i>Keali'i Reichel</i> 8:00 ANTIQUES ROADSHOW <i>Manor House Treasures</i> 9:00 ANTIQUES ROADSHOW <i>Phoenix, AZ, Part 2 of 3</i> 10:00 JOURNEY TO PLANET EARTH <i>Extreme Realities: Severe Weather, Climate Change, and Our National Security</i></p>	<p>30 7:30 LONG STORY SHORT WITH LESLIE WILCOX <i>Stacy Sproat-Beck</i> 8:00 SACRED JOURNEYS WITH BRUCE FEILER <i>Kumbh Mela</i> 9:00 SACRED JOURNEYS WITH BRUCE FEILER <i>Osun-Osogbo</i> 10:00 FRONTLINE <i>From Jesus to Christ: The First Christians, Part 2 of 2</i></p>	<p>31 7:30 THE MIND OF A CHEF <i>Impermanence</i> 8:00 LIVE FROM LINCOLN CENTER <i>New York Philharmonic New Year's Eve: Gershwin Celebration with Dianne Reeves and Norm Lewis</i> 10:00 MICHAEL FEINSTEIN NEW YEAR'S EVE AT THE RAINBOW ROOM</p>	<p>Christmas With the Mormon Tabernacle Choir Featuring Deborah Voigt and John Rhys-Davies Friday, December 19 9:00 pm</p> 		

PRIMETIME & WEEKEND LISTING SCHEDULE

PBS Hawaii is on the air seven days a week from 5:00 am to midnight. Viewers with cable service also have access to overnight programming which is indicated by **Cable Only**. Viewers with cable service and high-definition (HD) TVs may watch PBS Hawaii in high-definition on Oceanic Time Warner Channel 1010.

CODING:

(e) encore

TBA Programming to be announced

All programs have closed-captioning. Late-breaking events may result in schedule changes.

For more program information and the latest schedules, visit PBSHawaii.org

Questions about programming changes?

Please call PBS Hawaii toll free:

(800) 238-4847

Over-the-Air

Broadcast Channels

(KHET) Channel 11.1 • 11.2

(KMEB) Channel 10.1 • 10.2

Oceanic Time Warner

Basic Cable: Channel 10

Digital: Channel 90

HD: Channel 1010

PBS Hawaii Kids: Channel 443

Hawaiian Telcom

Basic Cable: Channel 11

HD: Channel 1011

PBS Hawaii Kids: Channel 96

I MONDAY

7:30 **NA MELE** *'Ale'a* (e)

8:00 **ANTIQUES ROADSHOW** *Junk in the Trunk 4, Part 1 of 2*

9:30 **SONGS OF JOY: A PBS HAWAII HOLIDAY CELEBRATION** (e)

10:30 **IL VOLO BUON NATALE** (e)

Cable Only

Midnight CHARLIE ROSE

1:00 **INDEPENDENT LENS** *The House I Live In / As I Am*

3:00 **INDEPENDENT LENS** *Indian Relay*

2 TUESDAY

7:30 **LONG STORY SHORT WITH LESLIE WILCOX**
Jim Burns: A Local Boy (e)



Courtesy of Universal

AMERICAN MASTERS *Bing Crosby Rediscovered* Tuesday, December 2, 8:00 pm

8:00 **AMERICAN MASTERS** *Bing Crosby*

Rediscovered Explore the life and legend of the entertainer through never-before-seen footage and interviews.

10:00 **RENEE FLEMING: CHRISTMAS IN NEW YORK**

11:00 **NA MELE TREASURES III** (e)

Cable Only

Midnight CHARLIE ROSE

1:00 **PETER PAN FROM THE MILWAUKEE BALLET**

3:00 **ANTIQUES ROADSHOW** *Denver, CO*

3 WEDNESDAY

7:30 **LEAHEY & LEAHEY**

8:00 **BEST OF BIRDS**

9:00 **NOVA** *First Man on the Moon* When Neil Armstrong set foot on the moon, he won instant fame. Yet few know the personal story of how his rare combination of talent, luck and experience led to his successful command of Apollo 11.

10:30 **THE NEW ENVIRONMENTALISTS** *From Ithaca to the Amazon*

11:00 **LONG STORY SHORT WITH LESLIE WILCOX**
Jim Burns: A Local Boy (e)

11:30 **LEAHEY & LEAHEY** (e)

Cable Only

Midnight CHARLIE ROSE

1:00 **SECRETS OF CHATSWORTH**

2:00 **ANTIQUES ROADSHOW** *Denver, CO*

3:00 **EMERY BLAGDON AND HIS HEALING MACHINE**

3:30 **KATMAI: ALASKA'S WILD PENINSULA**

4 THURSDAY

7:30 **HIKI NŌ** (e)

8:00 **INSIGHTS ON PBS HAWAII**

9:00 **50 YEARS WITH PETER, PAUL AND MARY**

See pages 6 and 7.

11:00 **SONGS OF JOY: A PBS HAWAII HOLIDAY CELEBRATION** (e)

Cable Only

Midnight CHARLIE ROSE

1:00 **ANTIQUES ROADSHOW** *Junk in the Trunk 4*

2:00 **NATURE** *Moment of Impact: Hunters & Herds*

3:00 **INDEPENDENT LENS** *The Powerbroker: Whitney Young's Fight for Civil Rights*

5 FRIDAY

7:30 **WASHINGTON WEEK WITH GWEN IFILL**

8:00 **CHARLIE ROSE – THE WEEK**

8:30 **THE MCLAUGHLIN GROUP**

9:00 **A TRIBUTE TO BRUCE SPRINGSTEEN** See page 7.

Cable Only

Midnight CHARLIE ROSE

1:00 **XEROX ROCHESTER INTERNATIONAL JAZZ FESTIVAL** *Best of Fest*

2:00 **INDEPENDENT LENS** *Indian Relay*

3:00 **THE THIS OLD HOUSE HOUR**

6 SATURDAY

12:00 **BIZ KID\$** *The Art of Negotiation* (e)

12:30 **HIKI NŌ** (e)

1:00 **SIT AND BE FIT** *Strong Back Strong Core* (e)

1:30 **THE BEST OF THE JOY OF PAINTING** *An Arctic Winter Day*

2:00 **WOODSMITH SHOP** *Slat-Wall Storage System*

Concert Promoter Recalls Peter, Paul and Mary's Waikiki Moment

On June 26 and 27, 1964, Peter Yarrow, Paul Stookey and Mary Travers played two sold-out concerts at the Waikiki Shell. Promoter Lou Robin, based on the West Coast, was the concert promoter for the folk trio's tour, with local promoter Tom Moffatt helping with Hawaii logistics.

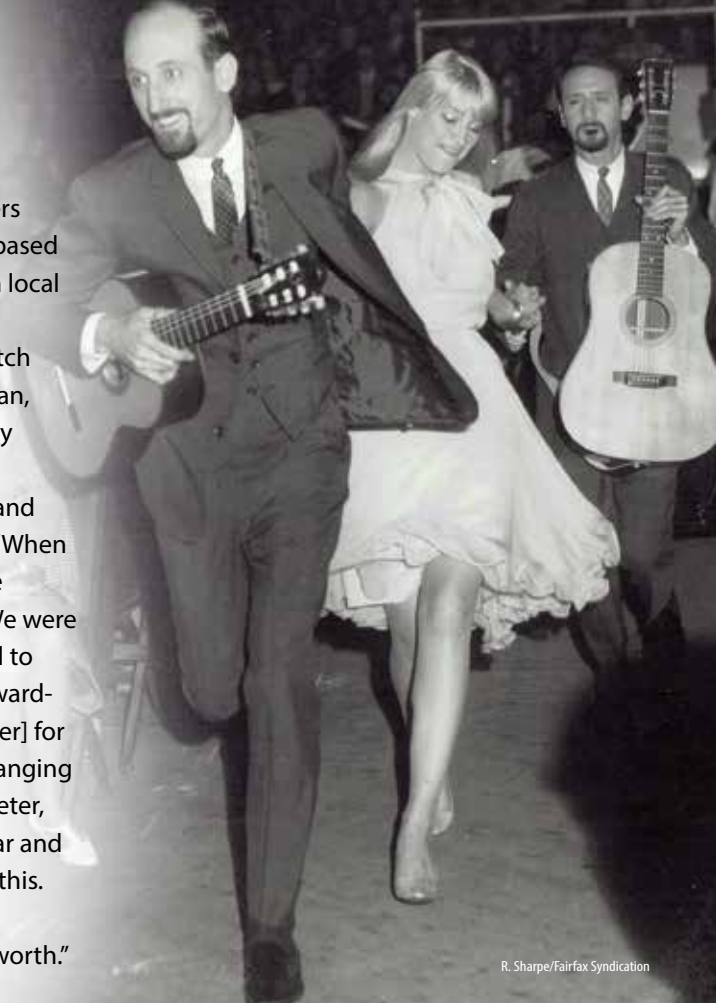
"It was great for us to be promoting in Hawaii because we would catch artists on the way to the South Pacific, to Australia, New Zealand, or Japan, or coming back. Everybody was happy to stay in Hawaii," Robin says.

50 Years with Peter, Paul and Mary THURSDAY, DECEMBER 4 | 9:00 PM

See program description on page 7.

Robin recalls a moment from Peter, Paul and Mary's stop in Hawaii that stood out to him. "When we picked [Peter, Paul and Mary] up from the airport, we were driving them to the hotel. We were going down Kalakaua Avenue... What we did to help promote the show was, we found a stewardess from one of the local airlines. We hired [her] for the day to walk up and down Kalakaua Avenue with a signboard, one hanging on the front, one hanging on the back. We had the concert dates and 'Peter, Paul and Mary' [printed] on each side. As we went by, we stopped the car and introduced her to Peter, Paul and Mary, and they were so excited about this. They thanked her profusely."

As for the concerts, Robin says, "They gave everyone their money's worth."



R. Sharpe/Fairfax Syndication

- 2:30 ASK THIS OLD HOUSE (e)
- 3:00 THIS OLD HOUSE *Charlestown Project 2014: Wood and Water* (e)
- 3:30 MOTORWEEK
- 4:00 MARTHA STEWART'S COOKING SCHOOL *The Grind*
- 4:30 COOK'S COUNTRY *Short Order Breakfast Classics*
- 5:00 SIMPLY MING *A Chicken in Every Pot*
- 5:30 MARTIN YAN'S TASTE OF VIETNAM *Life is a Beach*
- 6:00 DINING WITH THE CHEF
- 6:30 PBS NEWSHOUR WEEKEND
- 7:00 THE MIND OF A CHEF *Locality*
- 7:30 JACKIE EVANCHO – AWAKENING: LIVE IN CONCERT See page 7.
- 9:00 JOHN SEBASTIAN PRESENTS: FOLK REWIND (e)
- 11:00 AUSTIN CITY LIMITS *Juanes/Jesse & Joy* (e)
- Cable Only**
- Midnight INDEPENDENT LENS *Indian Relay*
- 1:00 SECRETS OF CHATSWORTH
- 2:00 ANTIQUES ROADSHOW *Junk in the Trunk 4*
- 3:00 WASHINGTON WEEK WITH GWEN IFILL
- 3:30 CHARLIE ROSE – THE WEEK

7 SUNDAY

- 12:00 ANTIQUES ROADSHOW *Denver, CO, Part 1 of 3* (e)

- 1:00 NATURE *Moment of Impact: Hunters & Herds* (e)
- 2:00 INSIGHTS ON PBS HAWAII (e)
- 3:00 HIKI NŌ (e)
- 3:30 LEAHEY & LEAHEY (e)
- 4:00 LONG STORY SHORT WITH LESLIE WILCOX *Jim Burns: A Local Boy* (e)
- 4:30 SECOND OPINION *Medical Marijuana*
- 5:00 NHK NEWSLINE
- 5:30 ASIA THIS WEEK
- 6:00 MOYERS & COMPANY
- 6:30 PBS NEWSHOUR WEEKEND
- 7:00 MASTERPIECE CLASSIC *Downton Abbey, Season 4, Part 1 of 8* (e)
- 9:00 MASTERPIECE CLASSIC *Downton Abbey, Season 4, Part 2 of 8* (e)
- 10:00 RUSSIA'S OPEN BOOK: WRITING IN THE AGE OF PUTIN (e)
- 11:00 TO THE CONTRARY WITH BONNIE ERBE
- 11:30 RELIGION & ETHICS NEWSWEEKLY
- Cable Only**
- Midnight INDEPENDENT LENS *The Powerbroker: Whitney Young's Fight for Civil Rights*
- 1:00 NATURE *Moment of Impact: Hunters & Herds*
- 2:00 RUSSIA'S OPEN BOOK: WRITING IN THE AGE OF PUTIN
- 3:00 KATMAI: ALASKA'S WILD PENINSULA
- 3:30 SKY ISLAND

8 MONDAY

- 7:30 NA MELE *Amy Hanai'i'i Gilliom and Willie K* (e)
- 8:00 MAGIC MOMENTS: THE BEST OF 50'S POP (e)
- 10:00 GREAT PERFORMANCES *Andrea Bocelli: Love in Portofino* (e)
- Cable Only**
- Midnight CHARLIE ROSE
- 1:00 MASTERPIECE CLASSIC *Downton Abbey, Season 4, Part 1 of 8*
- 3:00 MASTERPIECE CLASSIC *Downton Abbey, Season 4, Part 2 of 8*

9 TUESDAY

- 7:30 LONG STORY SHORT WITH LESLIE WILCOX *Jim Burns: His Own Man* (e)
- 8:00 SUZE ORMAN'S FINANCIAL SOLUTIONS FOR YOU (e)
- 10:00 ROCK, POP AND DOO WOP (e)
- Cable Only**
- Midnight CHARLIE ROSE
- 1:00 FRONTLINE *The Madoff Affair*
- 2:00 ANTIQUES ROADSHOW *Junk in the Trunk 3*
- 3:00 ANTIQUES ROADSHOW *Denver, CO*

10 WEDNESDAY

- 7:30 LEAHEY & LEAHEY
- 8:00 NA MELE: JERRY SANTOS (e)

Winter Highlights

50 Years with Peter, Paul and Mary

THURSDAY, DECEMBER 4 | 9:00 PM

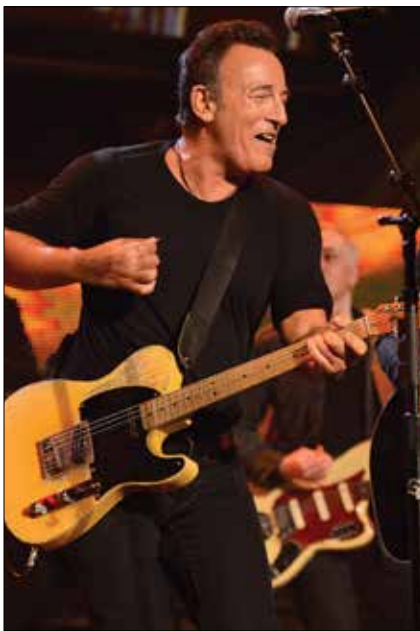
Celebrate the legacy of Peter, Paul and Mary, the trio that brought folk music to America's mass audiences. Featuring rare and previously unseen television footage of many of the trio's best performances and most popular songs, this is Peter, Paul and Mary at the peak of their artistry. From the group's emergence in Greenwich Village, to the Civil Rights and anti-war era of the 1960s, through the decades of their later advocacy and music, to Mary Travers' moving memorial, and finally to the present, where their legacy continues to inform and inspire successive generations, this intimate exploration of the trio reveals the impact of their artistry and activism on their generation and the world.

A Tribute to Bruce Springsteen

FRIDAY, DECEMBER 5 | 9:00 PM

An all-star lineup performs hits by "The Boss" at the 2013 MusiCares® Person of the Year benefit. Performers include Elton John, John Legend, Mumford & Sons, Patti Smith, Sting, Neil Young, Mavis Staples and more. The guest of honor himself, Bruce Springsteen,

closes out the night with the E Street Band, blazing through the classics "Thunder Road" and "Born to Run," before inviting the night's performers back on stage for an epic finale.



Bruce Springsteen. Photo Kevin Mazur © 2013

Jackie Evancho – Awakening: Live in Concert

SATURDAY, DECEMBER 6 | 7:30 PM

Angelic Jackie Evancho returns with her latest collection of songs from her new CD, *Awakening*. Drawn from the best known pieces from the classical canon, Broadway, uplifting sacred music and pop songs, Jackie's beautiful young voice soars again at the magnificent Longwood Gardens Open Air Theatre. Joining Jackie will be Cheyenne Jackson, star of Broadway, film and television, best known for his starring and award-winning

Broadway performance in *Finian's Rainbow*, his recurring role in NBC's "30 Rock" and his starring role in HBO biopic, *Liberace, Behind the Candelabra*.

Great Performances Tony Bennett & Lady Gaga: Cheek to Cheek LIVE!

THURSDAY, DECEMBER 11

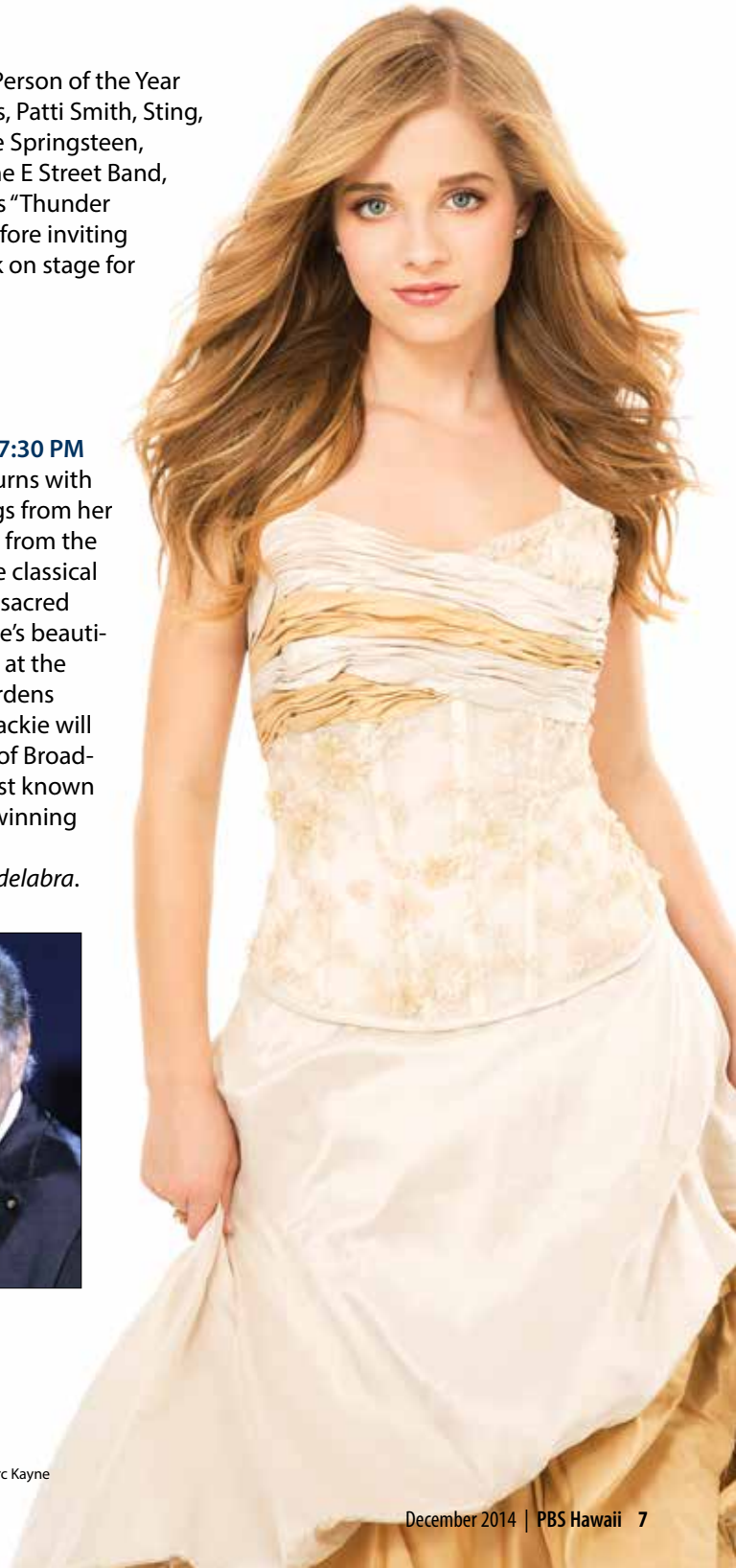
9:00 PM

Tony Bennett and Lady Gaga team up for a special concert, performing selections from their collaborative classic jazz recording, *Cheek to Cheek*, a brand new album of standards from the Great American Songbook, each handpicked by the artists, including "It Don't Mean a Thing (If It Ain't Got That Swing)," "Sophisticated Lady," "Anything Goes" and the titular "Cheek to Cheek."



Lady Gaga and Tony Bennett. Photo: Joseph Sinnott

Jackie Evancho. Photo: Marc Kayne





Paul Kolnik

LIVE FROM LINCOLN CENTER *Curtain Up: The School of American Ballet Workshop Performances*
Friday, December 12, 9:00 pm Pictured: Addie Tapp and Preston Chamblee in *Serenade*.

9:30 STRAIGHT NO CHASER: SONGS OF THE DECADES (e)

11:00 LONG STORY SHORT WITH LESLIE WILCOX
Jim Burns: His Own Man (e)

11:30 LEAHEY & LEAHEY (e)

Cable Only

Midnight CHARLIE ROSE

1:00 NAZI MEGA WEAPONS *U-Boat Base*

2:00 XEROX ROCHESTER INTERNATIONAL JAZZ FESTIVAL *Best of Fest*

3:00 RUSSIA'S OPEN BOOK: WRITING IN THE AGE OF PUTIN

11 THURSDAY

7:30 HIKI NŌ (e)

8:00 INSIGHTS ON PBS HAWAII

9:00 GREAT PERFORMANCES *Tony Bennett & Lady Gaga: Cheek to Cheek LIVE!* See page 7. (e)

10:30 GREAT PERFORMANCES *Rod Stewart: Merry Christmas, Baby (e)*

Cable Only

Midnight CHARLIE ROSE

1:00 ANTIQUES ROADSHOW *Junk in the Trunk 3*

2:00 NATURE *Moment of Impact: Jungle*

3:00 NOVA *3D Spies of WWII*

12 FRIDAY

7:30 WASHINGTON WEEK WITH GWEN IFILL

8:00 CHARLIE ROSE – THE WEEK

8:30 THE MCLAUGHLIN GROUP

9:00 LIVE FROM LINCOLN CENTER *Curtain Up:*

The School of American Ballet Workshop Performances The great George Balanchine saw the School of American Ballet as a springboard for his dazzling innovations. Explore what that means for one dedicated

group of students, rehearsing and performing some of his most celebrated works.

10:30 DOWNTON ABBEY REDISCOVERED (e)

Cable Only

Midnight CHARLIE ROSE

1:00 THE IRANIAN AMERICANS

2:00 FRONTLINE *The Madoff Affair*

3:00 THE THIS OLD HOUSE HOUR

13 SATURDAY

12:00 BIZ KID\$ *The World is a Risky Place (e)*

12:30 HIKI NŌ (e)

1:00 SIT AND BE FIT *Neuromuscular Coordination (e)*

1:30 THE BEST OF THE JOY OF PAINTING

Countryside Oval

2:00 WOODSMITH SHOP *Demilune Table*

2:30 ASK THIS OLD HOUSE (e)

3:00 THIS OLD HOUSE *Charlestown Project 2014: Gardens & Greek Revival Style (e)*

3:30 MOTORWEEK

4:00 MARTHA STEWART'S COOKING SCHOOL

Cooking with Wine

4:30 COOK'S COUNTRY *Dressing Up Meat and Potatoes*

5:00 SIMPLY MING *Not Andy Warhol's Tomato Soup & Grilled Cheese*

5:30 MARTIN YAN'S TASTE OF VIETNAM *One-dish Wonders*

6:00 DINING WITH THE CHEF

6:30 PBS NEWSHOUR WEEKEND

7:00 THE MIND OF A CHEF *Documentation*

7:30 THE BIG BAND YEARS (e)

9:30 ELVIS, ALOHA FROM HAWAII (e)

11:00 AUSTIN CITY LIMITS *Jason Isbell/Neko Case (e)*

Cable Only

Midnight THE IRANIAN AMERICANS

1:00 AUSTIN CITY LIMITS *Jason Isbell/Neko Case*

2:00 NAZI MEGA WEAPONS *U-Boat Base*

3:00 WASHINGTON WEEK WITH GWEN IFILL

3:30 CHARLIE ROSE – THE WEEK

14 SUNDAY

12:00 ANTIQUES ROADSHOW *Denver, CO, Part 2 of 3 (e)*

1:00 NOVA *3D Spies of WWII (e)*

2:00 INSIGHTS ON PBS HAWAII (e)

3:00 HIKI NŌ (e)

3:30 LEAHEY & LEAHEY (e)

4:00 LONG STORY SHORT WITH LESLIE WILCOX

Jim Burns: His Own Man (e)

4:30 SECOND OPINION *Knee Replacement*

5:00 NHK NEWSLINE

5:30 ASIA THIS WEEK

6:00 MOYERS & COMPANY

6:30 PBS NEWSHOUR WEEKEND

7:00 MASTERPIECE CLASSIC *Downton Abbey, Season 4, Part 3 of 8 (e)*

8:00 MASTERPIECE CLASSIC *Downton Abbey, Season 4, Part 4 of 8 (e)*

9:00 MASTERPIECE CLASSIC *Downton Abbey, Season 4, Part 5 of 8 (e)*

10:00 XMAS WITHOUT CHINA

11:00 TO THE CONTRARY WITH BONNIE ERBE

11:30 RELIGION & ETHICS NEWSWEEKLY

Cable Only

Midnight GREAT PERFORMANCES AT THE MET *Giulio Cesare*

15 MONDAY

7:30 NA MELE *Makaha Sons (e)*

8:00 ANTIQUES ROADSHOW *Junk in the Trunk 4, Part 2 of 2*

9:00 ANTIQUES ROADSHOW *Denver, CO, Part 3 of 3 (e)*

10:00 EUROPEAN CHRISTMAS MARKETS (e)

10:30 LIVE FROM LINCOLN CENTER *Curtain Up: The School of American Ballet Workshop Performances (e)*

Cable Only

Midnight CHARLIE ROSE

1:00 MASTERPIECE CLASSIC *Downton Abbey, Season 4, Part 3 of 8*

2:00 MASTERPIECE CLASSIC *Downton Abbey, Season 4, Part 4 of 8*

3:00 MASTERPIECE CLASSIC *Downton Abbey, Season 4, Part 5 of 8*

16 TUESDAY

7:30 LONG STORY SHORT WITH LESLIE

WILCOX *Daniel Martinez* See page 10.

8:00 SACRED JOURNEYS WITH BRUCE FEILER

Lourdes Host Bruce Feiler joins a group of active duty and retired U.S. military, wounded in Afghanistan, Iraq and other American wars, as they travel to the Catholic shrine of Lourdes in search of healing. While only half the American soldiers are Catholic, all hope that Lourdes can provide spiritual and emotional healing beyond the treatment they've already received for their physical wounds and disabilities. Whether sharing their stories of war and recovery with Bruce or finding healing in the camaraderie of fellow warriors, the pilgrimage allows the veterans to open up to others in a place whose primary focus is to ease suffering.

9:00 SACRED JOURNEYS WITH BRUCE FEILER

Shikoku The Japanese island of Shikoku is the birthplace of the most revered figure in Japanese Buddhism, the monk and teacher Kobo Daishi, who brought a populist form of Buddhism to Japan from China in the ninth century. Host Bruce Feiler follows a pilgrim trail that's taken by hundreds of thousands of Japanese and international pilgrims every year, a Buddhist pilgrimage that welcomes pilgrims of all faiths.

10:00 RICKOVER: THE BIRTH OF NUCLEAR POWER

Cable Only

Midnight CHARLIE ROSE

1:00 LIVE FROM LINCOLN CENTER *Curtain Up: The School of American Ballet Workshop Performances*

2:30 THE NEW ENVIRONMENTALISTS *From Ithaca to the Amazon*

3:00 ANTIQUES ROADSHOW *Denver, CO*

17 WEDNESDAY

7:30 LEAHEY & LEAHEY

8:00 BURT BACHARACH'S BEST (e)

9:30 GREAT PERFORMANCES *Rejoice with Itzhak Perlman and Cantor Yitzhak Meir Helfgot (e)*

11:00 LONG STORY SHORT WITH LESLIE WILCOX *Daniel Martinez (e)*

11:30 LEAHEY & LEAHEY (e)

Cable Only

Midnight CHARLIE ROSE

1:00 NOVA *Making Stuff Colder*

2:00 SACRED JOURNEYS WITH BRUCE FEILER *Lourdes*

3:00 SACRED JOURNEYS WITH BRUCE FEILER *Shikoku*

18 THURSDAY

7:30 HIKI NŌ (e)

8:00 INSIGHTS ON PBS HAWAII

9:00 PBS HAWAII PRESENTS *Family Ingredients (e)*

10:00 GLOBE TREKKER *Globe Trekker Special: Art Trails of the French Riviera*

11:00 XMAS WITHOUT CHINA (e)

Cable Only

Midnight CHARLIE ROSE

1:00 NATURE *Elsa's Legacy: The Born Free Story*

2:00 NOVA *Making Stuff Wilder*

3:00 NOVA *Making Stuff Colder*

19 FRIDAY

7:30 WASHINGTON WEEK WITH GWEN IFILL

8:00 CHARLIE ROSE – THE WEEK

8:30 THE MCLAUGHLIN GROUP

9:00 CHRISTMAS WITH THE MORMON

TABERNACLE CHOIR FEATURING DEBORAH VOIGT AND JOHN RHYS-DAVIES Soprano Deborah Voigt and acclaimed British actor John Rhys-Davies join the Mormon Tabernacle Choir and Orchestra for a Christmas concert of holiday favorites.

10:00 A GRAND MERCER CHRISTMAS (e)

11:00 CHRISTMAS IN NORWAY WITH THE ST. OLAF CHOIR (e)

Cable Only

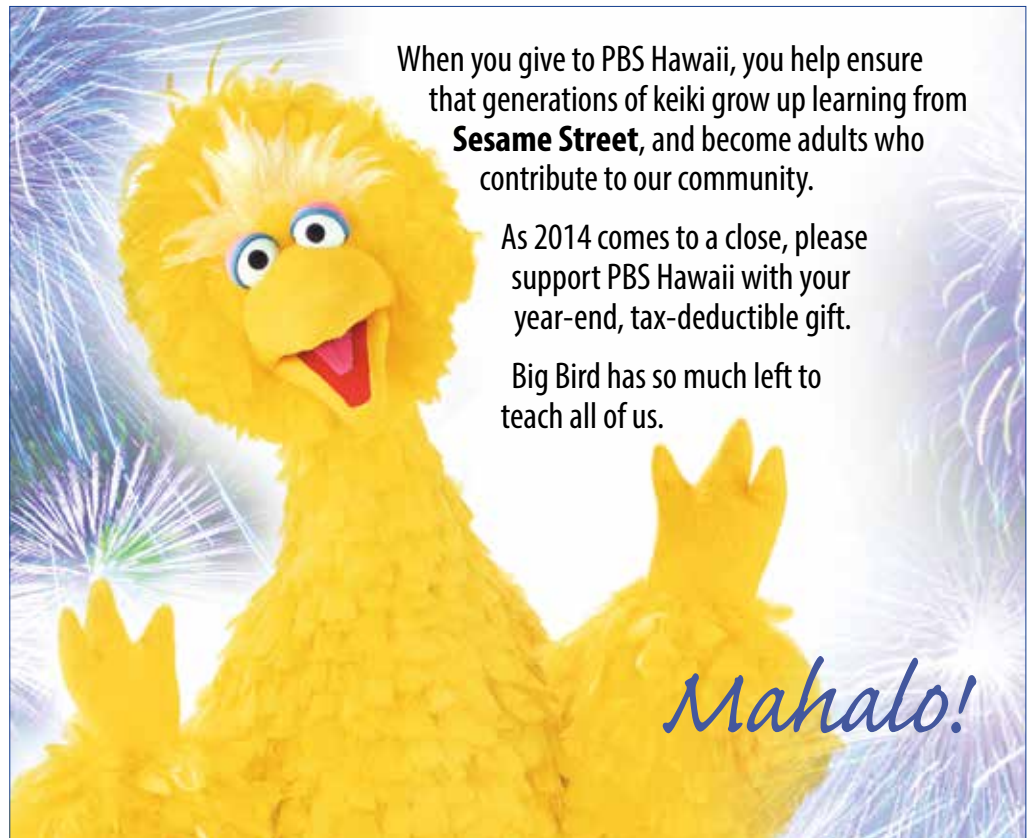
Midnight CHARLIE ROSE

1:00 WASHINGTON WEEK WITH GWEN IFILL

1:30 CHARLIE ROSE – THE WEEK

2:00 XMAS WITHOUT CHINA

3:00 THE THIS OLD HOUSE HOUR

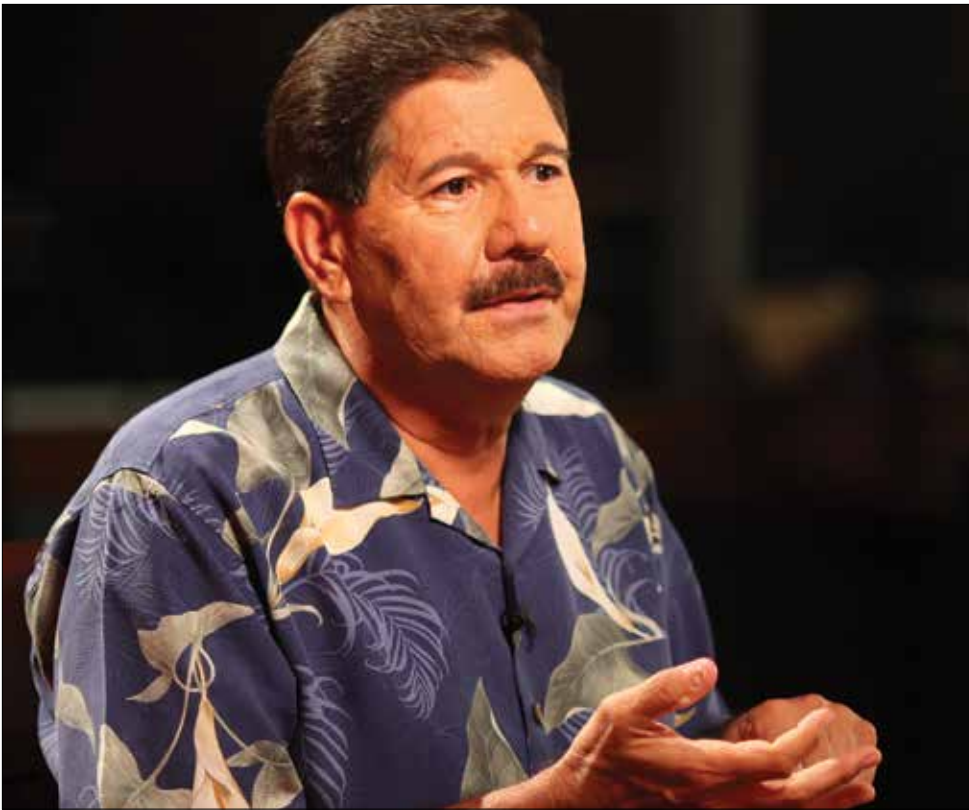


When you give to PBS Hawaii, you help ensure that generations of keiki grow up learning from **Sesame Street**, and become adults who contribute to our community.

As 2014 comes to a close, please support PBS Hawaii with your year-end, tax-deductible gift.

Big Bird has so much left to teach all of us.

Mahalo!



LONG STORY SHORT WITH LESLIE WILCOX *Daniel Martinez* Tuesday, December 16, 7:30 pm
The Chief Historian of the World War II Valour in the Pacific National Monument talks about his emotional experiences with the survivors of the Dec. 7, 1941 attack on Pearl Harbor, and of his family's connections with the Day of Infamy.

20 SATURDAY

- 12:00 BIZ KID\$** *Economic Cycles (What Goes Up Must Come Down)* (e)
12:30 HIKI NŌ (e)
1:00 SIT AND BE FIT *Release Tension Through Exercise* (e)
1:30 THE BEST OF THE JOY OF PAINTING *Twin Falls*
2:00 WOODSMITH SHOP *Dartboard Cabinet*
2:30 ASK THIS OLD HOUSE (e)
3:00 THIS OLD HOUSE *Charlestown Project 2014: Kitchens and Baths* (e)
3:30 MOTORWEEK
4:00 MARTHA STEWART'S COOKING SCHOOL *Italian Favorites*
4:30 COOK'S COUNTRY *Black and White Desserts*
5:00 SIMPLY MING *Shrimp & Garlic: Compass-wide Comfort Combo*
5:30 MARTIN YAN'S TASTE OF VIETNAM *Modern Vietnam*
6:00 DINING WITH THE CHEF
6:30 PBS NEWSHOUR WEEKEND
7:00 THE MIND OF A CHEF *Fäviken*
7:30 CHRISTMAS ON THE DANUBE (e)
8:00 CHRISTMAS IN ALSACE WITH CHEF HUBERT KELLER
9:00 AROUND THE WORLD: THE CRANE CANDLELIGHT CONCERT Featuring over

300 carolers and musicians from the renowned Crane School of Music at the State University of New York, the Crane Chorus and the Crane Symphony Orchestra perform traditional Christmas and seasonal hymns along with popular favorites.

- 10:00 LIVE FROM THE ARTISTS DEN** *Fifth Anniversary Special* (e)
11:00 AUSTIN CITY LIMITS *Rodrigo y Gabriela* (e)
Cable Only
Midnight CHRISTMAS WITH THE MORMON TABERNACLE CHOIR FEATURING DEBORAH VOIGT AND JOHN RHYS-DAVIES
1:00 SACRED JOURNEYS WITH BRUCE FEILER *Lourdes*
2:00 SACRED JOURNEYS WITH BRUCE FEILER *Shikoku*
3:00 WASHINGTON WEEK WITH GWEN IFILL
3:30 CHARLIE ROSE – THE WEEK

21 SUNDAY

- 12:00 ANTIQUES ROADSHOW** *Denver, CO, Part 3 of 3* (e)
1:00 NOVA *Making Stuff Wilder* (e)
2:00 INSIGHTS ON PBS HAWAII (e)
3:00 HIKI NŌ (e)
3:30 LEAHEY & LEAHEY (e)
4:00 LONG STORY SHORT WITH LESLIE WILCOX *Daniel Martinez* (e)

- 4:30 SECOND OPINION** *Food as Medicine*
5:00 NHK NEWSLINE
5:30 ASIA THIS WEEK
6:00 MOYERS & COMPANY
6:30 PBS NEWSHOUR WEEKEND
7:00 TALES FROM THE ROYAL BEDCHAMBER
8:00 MASTERPIECE CLASSIC *Downton Abbey, Season 4, Part 6 of 8* (e)
9:00 MASTERPIECE CLASSIC *Downton Abbey, Season 4, Part 7 of 8* (e)
10:30 EUROPEAN CHRISTMAS MARKETS (e)
11:00 TO THE CONTRARY WITH BONNIE ERBE
11:30 RELIGION & ETHICS NEWSWEEKLY
Cable Only
Midnight RICKOVER: THE BIRTH OF NUCLEAR POWER
2:00 TALES FROM THE ROYAL BEDCHAMBER
3:00 GLOBE TREKKER *Globe Trekker Special: Art Trails of the French Riviera*

22 MONDAY

- 7:30 NA MELE** *George Winston (Plays Slack Key)* (e)
8:00 ANTIQUES ROADSHOW *The Boomer Years*
9:00 ANTIQUES ROADSHOW *Phoenix, AZ, Part 1 of 3* (e)
10:00 INDEPENDENT LENS *Jiro Dreams of Sushi* (e)
11:30 THE NEW ENVIRONMENTALISTS *From Ithaca to the Amazon* (e)

Cable Only

- Midnight CHARLIE ROSE**
1:00 MASTERPIECE CLASSIC *Downton Abbey, Season 4, Part 6 of 8*
2:00 MASTERPIECE CLASSIC *Downton Abbey, Season 4, Part 7 of 8*
3:30 EUROPEAN CHRISTMAS MARKETS

23 TUESDAY

- 7:30 LONG STORY SHORT WITH LESLIE WILCOX** *Victoria Cuba* (e)
8:00 SACRED JOURNEYS WITH BRUCE FEILER *Jerusalem* In coming to Jerusalem, Bruce returns to his own Jewish roots. Whether walking with Christian pilgrims on the Jesus Trail, celebrating Sukkot with American Jews in Jerusalem or exploring the past with scholars of the three faiths – Judaism, Christianity and Islam – which share Jerusalem, Bruce reveals a land where religious and historical divisions have made it the most contentious place on earth, and why it has been a center of pilgrimage for so long.
9:00 SACRED JOURNEYS WITH BRUCE FEILER *Hajj* Millions of pilgrims gather in the valleys outside the city of Mecca to take part in the annual five-day pilgrimage every Muslim hopes to complete at least once. Since non-Muslims aren't permitted

in Mecca, Bruce's surrogate is veteran reporter Anisa Mehdi, with whom Bruce will Skype at regular intervals. As the pilgrims visit sites in Medina associated with the life of the Prophet Muhammad, Bruce enlists the help of a historian and an eminent American Muslim scholar to explore the origins of the religion and its iconic pilgrimage.

10:00 FRONTLINE *From Jesus to Christ: The First Christians, Part 1 of 2 (e)*

Cable Only

Midnight CHARLIE ROSE

1:00 FRONTLINE *From Jesus to Christ: The First Christians*

24 WEDNESDAY

7:30 CHRISTMAS ON THE DANUBE (e)

8:00 CHRISTMAS WITH THE MORMON TABERNACLE CHOIR FEATURING DEBORAH VOIGT AND JOHN RHYSDAVIES (e)

9:00 HOLIDAY HANDBELLS: THE RALEIGH RINGERS Since its founding, The Raleigh Ringers has been dazzling concert audiences with unique interpretations of sacred, secular and popular music. Performances include Vince Guaraldi's "A Charlie Brown Christmas" score, Chopin's "Valse Brilliance" and "Silent Night."

10:00 AROUND THE WORLD: THE CRANE CANDLELIGHT CONCERT (e)

11:00 A GRAND MERCER CHRISTMAS(e)

Cable Only

Midnight CHARLIE ROSE

1:00 NOVA *Great Cathedral Mystery*

2:00 SACRED JOURNEYS WITH BRUCE FEILER
Jerusalem

3:00 SACRED JOURNEYS WITH BRUCE FEILER *Hajj*

25 THURSDAY

7:30 HIKI NŌ (e)

8:00 CALL THE MIDWIFE HOLIDAY SPECIAL
Rehearsals for the Sunday School Christmas concert create an inconvenience for the nuns and nurses of Nonnatus House. Chummy takes over running York Lodge after an outbreak of chicken pox there. As the new year approaches, everyone wonders what it will bring.

9:30 VICIOUS HOLIDAY SPECIAL Freddie and Stuart host a holiday soiree in their small central London flat. Upstairs neighbor Ash has volunteered to cook the meal, feisty best friend Violet is up to her old tricks, and a wicked game of Truth or Dare brings up hidden truths – and surprises as well.

10:00 GLOBE TREKKER *Globe Trekker Food Hour: Sicily*

11:00 TALES FROM THE ROYAL BEDCHAMBER (e)

Cable Only

Midnight CHARLIE ROSE

1:00 ANTIQUES ROADSHOW *The Boomer Years*

2:00 NATURE *The Himalayas*

3:00 NOVA *Building the Great Cathedrals*

26 FRIDAY

7:30 WASHINGTON WEEK WITH GWEN IFILL

8:00 CHARLIE ROSE – THE WEEK

8:30 THE MCLAUGHLIN GROUP

9:00 AMERICAN MASTERS *Bing Crosby Rediscovered (e)*

10:30 CALL THE MIDWIFE HOLIDAY SPECIAL (e)

Cable Only

Midnight CHARLIE ROSE

1:00 INDEPENDENT LENS *Jiro Dreams of Sushi*

2:30 THE NEW ENVIRONMENTALISTS *From Ithaca to the Amazon*

3:00 THE THIS OLD HOUSE HOUR

27 SATURDAY

12:00 BIZ KID\$ *The Green Economy & You (e)*

12:30 HIKI NŌ (e)

1:00 SIT AND BE FIT *Strengthening Muscles & Joints (e)*

1:30 THE BEST OF THE JOY OF PAINTING
Fisherman's Paradise

2:00 WOODSMITH SHOP *Box-Jointed Tray & Vase*

2:30 ASK THIS OLD HOUSE (e)

3:00 THIS OLD HOUSE *Charlestown Project 2014: Rowhouse, Lighthouse (e)*

3:30 MOTORWEEK

4:00 MARTHA STEWART'S COOKING SCHOOL
On the Bone

4:30 COOK'S COUNTRY *Fresh and Spicy Spins to Roast Pork and Tacos*

5:00 SIMPLY MING *Australian Beef with Mark Best*

5:30 MARTIN YAN'S TASTE OF VIETNAM *Gone Fishing*

6:00 DINING WITH THE CHEF

6:30 PBS NEWSHOUR WEEKEND



CALL THE MIDWIFE HOLIDAY SPECIAL Thursday, December 25, 8:00 pm Pictured: Shelagh (Laura Main) and Timothy Turner (Max Macmillan)



MICHAEL FEINSTEIN NEW YEAR'S EVE AT THE RAINBOW ROOM Wednesday, December 31, 10:00 pm

7:00 GREAT PERFORMANCES AT THE MET

Così fan tutte Met music director James Levine conducts Mozart's barbed romance, a comic masterpiece about the romantic complications that ensue when two friends decide to test their fiancées' fidelity.

10:30 VICIOUS HOLIDAY SPECIAL (e)

11:00 AUSTIN CITY LIMITS Tom Waits (e)

Cable Only

Midnight CALL THE MIDWIFE HOLIDAY SPECIAL

1:30 AMERICAN MASTERS Bing Crosby
Rediscovered

3:00 WASHINGTON WEEK WITH GWEN IFILL

3:30 CHARLIE ROSE – THE WEEK

28 SUNDAY

12:00 ANTIQUES ROADSHOW *The Boomer Years (e)*

1:00 NOVA *Building the Great Cathedrals (e)*

2:00 PACIFIC HEARTBEAT *There Once Was an Island – Te Henua E Nnoho (e)*

3:00 HIKI NŌ (e)

3:30 NA MELE George Winston (*Plays Slack Key (e)*)

4:00 LONG STORY SHORT WITH LESLIE WILCOX *Victoria Cuba (e)*

4:30 SECOND OPINION *Mystery Diagnosis III*

5:00 NHK NEWSLINE

5:30 ASIA THIS WEEK

6:00 MOYERS & COMPANY

6:30 PBS NEWSHOUR WEEKEND

7:00 THE GREAT BRITISH BAKE OFF

8:00 MASTERPIECE CLASSIC *Downton Abbey, Season 4, Part 8 of 8 (e)*

10:00 SECRETS OF HIGHCLERE CASTLE (e)

11:00 TO THE CONTRARY WITH BONNIE ERBE

11:30 RELIGION & ETHICS NEWSWEEKLY

Cable Only

Midnight GREAT PERFORMANCES AT THE MET
Così fan tutte

3:30 VICIOUS HOLIDAY SPECIAL

29 MONDAY

7:30 NA MELE Keali'i Reichel (e)

8:00 ANTIQUES ROADSHOW *Manor House Treasures*

9:00 ANTIQUES ROADSHOW *Phoenix, AZ, Part 2 of 3 (e)*

10:00 JOURNEY TO PLANET EARTH *Extreme Realities: Severe Weather, Climate Change, and Our National Security*

11:00 THE GREAT BRITISH BAKE OFF (e)

Cable Only

Midnight CHARLIE ROSE

1:00 SECRETS OF HIGHCLERE CASTLE

2:00 MASTERPIECE CLASSIC *Downton Abbey, Season 4, Part 8 of 8*

30 TUESDAY

7:30 LONG STORY SHORT WITH LESLIE WILCOX
Stacy Sproat-Beck (e)

8:00 SACRED JOURNEYS WITH BRUCE FEILER
Kumbh Mela Every twelve years, tens of millions of men, women and children gather on the flood plain of the Ganges and Yamuna Rivers for the largest religious gathering on the planet: the Kumbh Mela, the great Hindu festival where pilgrims come from across India, and around the world, to bathe where the two sacred rivers meet. Bruce joins millions of pilgrims, Naga *babas* and *sadhu* holy men and women who are taking a "holy dip" in a ritual that Hindus believe washes away sins and breaks the endless cycle of reincarnation.

9:00 SACRED JOURNEYS WITH BRUCE FEILER
Osun-Osogbo Host Bruce Feiler travels to Nigeria with a group of African American pilgrims who are attending an annual festival in honor of the Yoruba Goddess Osun as a way to reconnect with their cultural and spiritual roots. This indigenous African faith has evolved and spread to become one of the ten largest religions in the world. As the Osun Festival reaches its climax, Bruce sees that practitioners from the Yoruba Diaspora are reinvigorating the faith in its homeland while taking home a new sense of identity as African Americans.

10:00 FRONTLINE *From Jesus to Christ: The First Christians, Part 2 of 2 (e)*

Cable Only

Midnight CHARLIE ROSE

1:00 FRONTLINE *From Jesus to Christ: The First Christians*

3:00 ANTIQUES ROADSHOW *Phoenix, AZ*

31 WEDNESDAY

7:30 THE MIND OF A CHEF *Impermanence (e)*

8:00 LIVE FROM LINCOLN CENTER *New York Philharmonic New Year's Eve: Gershwin Celebration with Dianne Reeves and Norm Lewis* Ring in 2015 with the New York Philharmonic, Dianne Reeves and Norm Lewis, as they perform musical favorites by George Gershwin.

10:00 MICHAEL FEINSTEIN NEW YEAR'S EVE AT THE RAINBOW ROOM

11:00 ACL PRESENTS: AMERICANA MUSIC FESTIVAL (e)

Cable Only

Midnight CHARLIE ROSE

1:00 MICHAEL FEINSTEIN NEW YEAR'S EVE AT THE RAINBOW ROOM

2:00 NATURE *Cracking the Koala Code*

3:00 NOVA *Extreme Ice*

5:00 am	Sesame Street
6:00 am	Daniel Tiger's Neighborhood
6:30 am	Daniel Tiger's Neighborhood
7:00 am	Dinosaur Train
7:30 am	Dinosaur Train
8:00 am	Wild Kratts
8:30 am	Wild Kratts
9:00 am	Martha Speaks
9:30 am	Arthur
10:00 am	Peg + Cat
10:30 am	Peg + Cat
11:00 am	Super Why!
11:30 am	Thomas & Friends
NOON	The Cat in the Hat
12:30 pm	Curious George
1:00 pm	Curious George
1:30 pm	WordGirl
2:00 pm	Sid the Science Kid
2:30 pm	Caillou
3:00 pm	Clifford the Big Red Dog
3:30 pm	Cyberchase
4:00 pm	Dinosaur Train
4:30 pm	Thomas & Friends
5:00 pm	Odd Squad
5:30 pm	The Cat in the Hat
6:00 pm	Sesame Street
7:00 pm	Daniel Tiger's Neighborhood
7:30 pm	Daniel Tiger's Neighborhood
8:00 pm	Dinosaur Train
8:30 pm	Dinosaur Train
9:00 pm	Peg + Cat
9:30 pm	Peg + Cat
10:00 pm	Super Why!
10:30 pm	Thomas & Friends
11:00 pm	The Cat in the Hat
11:30 pm	Curious George
Midnight	Curious George
12:30 am	Arthur
1:00 am	Odd Squad
1:30 am	Wild Kratts
2:00 am	Wild Kratts
2:30 am	Martha Speaks
3:00 am	WordGirl
3:30 am	Caillou
4:00 am	Clifford the Big Red Dog
4:30 am	Cyberchase

	MONDAY-FRIDAY	SATURDAY	SUNDAY
5am	Clifford the Big Red Dog	Cyberchase	Caillou
5:30	Caillou	Angelina Ballerina	Bob the Builder
6am	Sesame Street	Clifford the Big Red Dog	Barney & Friends
6:30		Sid the Science Kid	Mister Rogers' Neighborhood
7am	Curious George	Curious George	Sesame Street
7:30	Curious George	The Cat in the Hat	
8am	Peg + Cat	Peg + Cat	Peg + Cat
8:30	Dinosaur Train	WordWorld	WordWorld
9am	Daniel Tiger's Neighborhood	Daniel Tiger's Neighborhood	Daniel Tiger's Neighborhood
9:30	Daniel Tiger's Neighborhood	Dinosaur Train	Super Why!
10am	Super Why!	Wild Kratts	Curious George
10:30	Thomas & Friends	Thomas & Friends	Wordgirl
11am	Sid the Science Kid	Martha Speaks	Arthur
11:30	The Cat in the Hat	Odd Squad	Wild Kratts
noon	Sesame Street	Biz Kid\$	Antiques Roadshow
12:30	Martha Speaks	HIKI NŌ	
1pm	NHK Newslines	Sit and Be Fit	NOVA
1:30	NHK World	The Best of The Joy of Painting	
2pm	NHK Newslines	Woodsmith Shop	Insights on PBS Hawaii
2:30	NHK World	Ask This Old House	
3pm	Wild Kratts	This Old House	HIKI NŌ
3:30	Wordgirl	MotorWeek	Leahey & Leahey
4pm	Arthur	Martha Stewart's Cooking School	Long Story Short
4:30	Odd Squad	Cook's Country	Second Opinion
5pm	NHK World	Simply Ming	NHK Newslines
5:30	NBR	Matrin Yan's Taste of Vietnam	Asia This Week
6pm	BBC World News	Dining with the Chef	Moyers & Company
6:30	PBS NewsHour	PBS NewsHour Weekend	PBS NewsHour Weekend

For the most current program and schedule information, please visit our website at PBSHawaii.org

NHK WORLD

	MONDAY	TUESDAY	WEDNESDAY	THURSDAY	FRIDAY
1:00 pm	NHK Newslines	NHK Newslines	NHK Newslines	NHK Newslines	NHK Newslines
1:30	Lunch On!	Great Nature	Design Talks	Asian Voices	Cool Japan (1:10 pm)
2:00 pm	NHK Newslines	NHK Newslines	NHK Newslines	NHK Newslines	NHK Newslines
2:30	Journeys in Japan	Tokyo Eye	Japanology Plus	JIB Program	NHK World Selection (2:10 pm)
5:00 pm	Asia Biz Forecast	Science View	At Home with Venetia in Kyoto	imagine-nation	Asia Insight

Local broadcasts of NHK World programming are made possible in part by the generous support of:
ATSUHIKO AND INA GOODWIN TATEUCHI FOUNDATION • CRONIN FRIED SEKIYA KEKINA & FAIRBANKS

COMMUNITY PARTNERS

Business and Foundation Support

- ABC Stores
- American Savings Bank
- Atsuhiko and Ina Goodwin Tateuchi Foundation
- Bali Steak & Seafood
- Bank of Hawaii Foundation
- The Cades Foundation
- Cades Schutte LLP
- Carlsmith Ball LLP
- Cronin Fried Sekiya Kekina & Fairbanks
- Elite Parking
- First Hawaiian Bank
- First Insurance Company of Hawaii
- First Insurance Company of Hawaii Charitable Foundation
- Foodland
- Hanalani Schools
- Hawaii Association for the Education of Young Children
- Hawaii Credit Union League, on behalf of Hawaii's Credit Unions
- Hawaii Government Employees Assoc.
- Hawaii Medical Service Association
- Hawaiian Airlines
- Hawaiian Telcom
- HiCentral MLS
- Hilton Hawaiian Village
- Honolulu Board of REALTORS®
- Honolulu Civil Beat
- Hyatt Regency Waikiki Resort & Spa
- John & Clifford Mirikitani Foundation
- John R. Halligan Charitable Fund
- Kamehameha Schools
- Keiki Care Center of Hawaii
- Marians Catering
- My Gym Children's Fitness Center
- Nan, Inc.
- NetEnterprise
- Oceanic Time Warner Cable
- Ohana Health Plan
- Our Kakaako
- Pearl Harbor Federal Credit Union
- Pigtails & Crewcuts
- R. M. Towill Corporation
- Ruby Tuesday Hawaii
- Saint Marianne Cope Preschool
- Seven-Eleven Hawaii
- Stepping Stones Academy
- The Plaza Assisted Living
- Tutu & Me Traveling Preschool
- University of Hawaii Community Colleges
- University of Hawaii Professional Assembly
- Waimea Valley
- Yelp Hawaii

PARTNER PROFILE

First Insurance Company of Hawaii

In addition to its longtime sponsorship of **Independent Lens** and **POV**, First Insurance Company of Hawaii has renewed its support of **Downton Abbey** featured on **Masterpiece**. Season 5 of the hit British drama begins January 4.



Stephen Tabussi
Senior Vice President,
First Insurance Company
of Hawaii

Senior Vice President Stephen Tabussi explained that renewing their sponsorship has been an easy and gratifying decision to make every year.

“We’re proud to support PBS Hawaii and to be associated with the network’s smart and entertaining programming,” Stephen said. “We know our support matters to the community because our staff, partners and customers tell us so.”

First Insurance Company of Hawaii’s support of PBS Hawaii extends beyond broadcast sponsorship. From now until December 31, First Insurance Company of Hawaii has pledged to match viewer’s donations, dollar-for-dollar, up to \$25,000.

“Our connection to the community is woven into our corporate values,” Stephen said. “We try to give our employees as many outlets and opportunities as possible to make a difference, whether that’s by matching their charitable contributions to local non-profits or by organizing volunteer events in the community.”

Mahalo a nui loa to First Insurance Company of Hawaii for your business support. If you or your business would like to sponsor programs on PBS Hawaii, please contact Tatsu Sasaki at tsasaki@pbshawaii.org or call (808) 973-1990.

**First Insurance Company of Hawaii
will double your gift to PBS Hawaii!**

From now through December 31, First Insurance Company of Hawaii has pledged to match donations, dollar-for-dollar, up to \$25,000!

“At First Insurance, we see the value of PBS Hawaii’s programming to our community, and understand that if we want this sort of programming to continue to thrive, then we need to support it.”

– **Stephen Tabussi**
Senior Vice President

**Make your gift
and double
your impact
today!**



PBS Hawaii **Messenger Bag**

For your donation of \$65 or more, you can receive the new **PBS Hawaii Messenger Bag**. This black-and-white pack features an open main compartment for your paperwork or tablet and is easy to grab on the go. The messenger bag includes a media pocket, earbud port, a side mesh pocket and adjustable shoulder straps. Measures 11" H x 9.5" W x 3" L.

Name: _____

Address: _____

City: _____ State: _____ Zip: _____

Phone: _____

Email: _____

VISA Mastercard American Express Check _____

Card No.: _____ Exp.: _____

Signature: _____

No gift needed. I would like my entire donation to go toward quality programming for the community.

Please check here if you **do not** want to receive the PBS Hawaii Program Guide.

Please check here if you would like to receive the PBS Hawaii Program Guide via email. Please include your email address.

Contribute online at PBSHawaii.org or mail your gift to:
PBS Hawaii, P.O. Box 11599, Honolulu, HI 96828

Please indicate your level of support:

- \$1000 \$500
 \$365 \$250
 \$120 \$65 **Messenger Bag**
 \$35 Other amount: \$ _____

*For a gift of \$35 or more, you can choose to receive our monthly PBS Hawaii Program Guide by mail or as a PDF to your email address.
For questions, please call PBS Hawaii: (808) 973-2222.



Mahalo to Aloha Petroleum, Ltd.

PBS Hawaii recently received a \$10,000 gift from Aloha Petroleum, Ltd. for our public television station's future home on Nimitz Highway and Sand Island Access Road. Pictured, from left: Cassandra Bui, Marketing Communications Manager, Aloha Petroleum; Ben Nishimoto, Vice President of Advancement, PBS Hawaii; Leslie Wilcox, President and CEO, PBS Hawaii; and Richard Parry, CEO, Aloha Petroleum. Photo courtesy Aloha Petroleum, Ltd.





PBS Hawaii
2350 Dole Street
Honolulu, Hawaii 96822

PERIODICALS DATED MATERIAL

About Us

PBS Hawaii advances learning and discovery through storytelling that profoundly touches people's lives. We bring the world to Hawaii and Hawaii to the world.

Major support of the station comes from the people and businesses of Hawaii.

PBS Hawaii

2350 Dole Street
Honolulu, HI 96822

(808) 973-1000
Toll Free: (800) 238-4847

Website

PBSHawaii.org

Weekly Newsletter

Send request to:
newsletter@pbshawaii.org

Comments/Suggestions

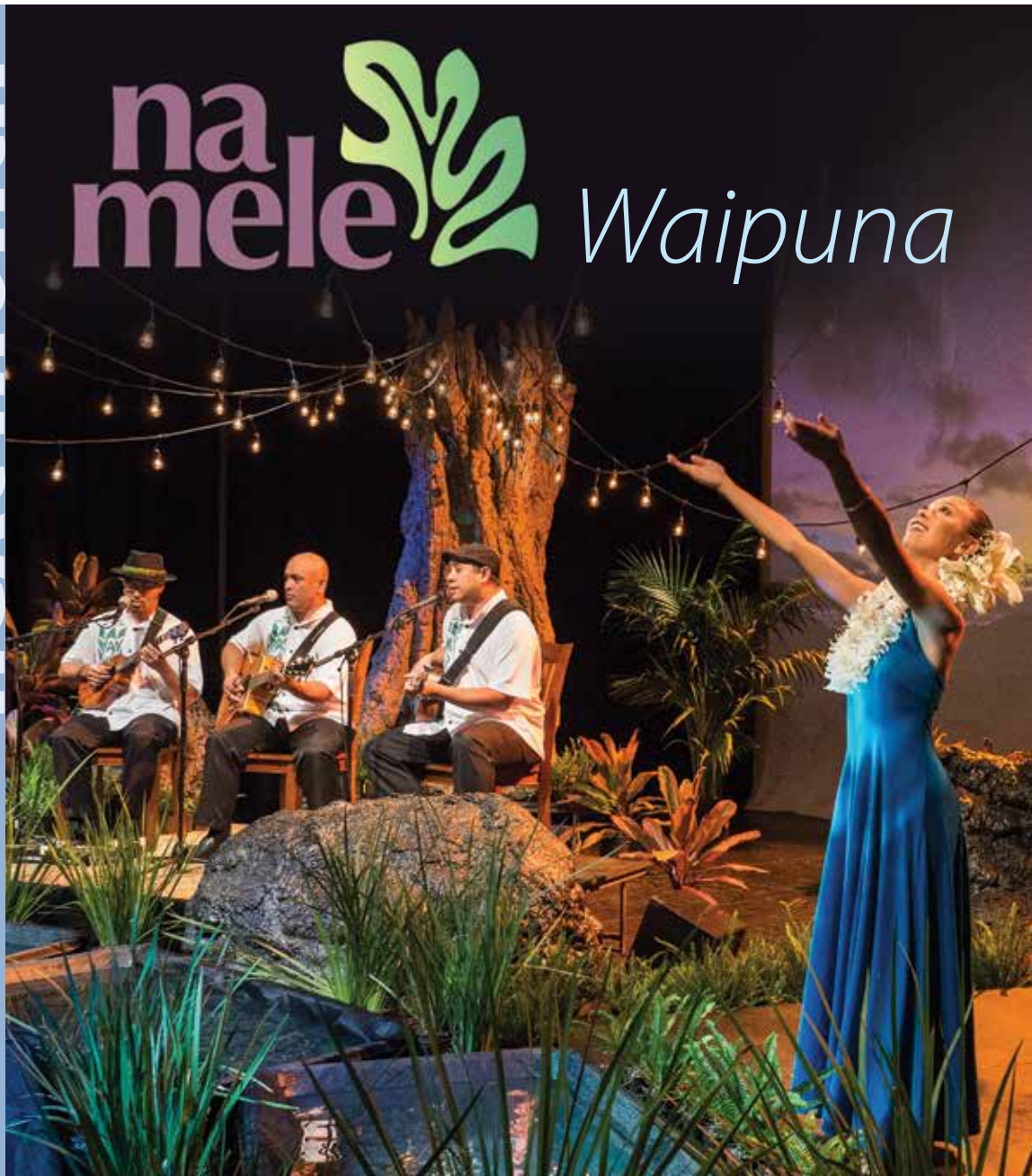
email@pbshawaii.org



next month

na
mele 

Waipuna



PBS Hawaii, a member of the Public Broadcasting Service (PBS), is a community-supported, non-commercial public television station broadcasting throughout the state of Hawaii.

PBS HAWAII magazine (ISSN: 1946-0813) is published monthly by the Hawaii Public Television Foundation, dba PBS Hawaii. Periodicals postage PAID at Honolulu, Hawaii and at additional entry mailing offices in Hilo, Kahului, Kailua-Kona, Kaunakakai, and Lihue. POSTMASTER: Send address changes to PBS Hawaii, Advancement Department, 2350 Dole Street, Honolulu, HI 96822.